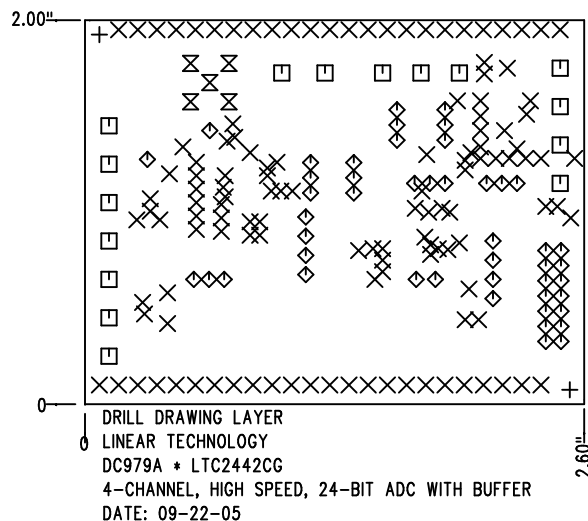


REVISIONS			
REV	DESCRIPTION	APPR	DATE
A	PROTOTYPE RELEASE	MT	09-22-05

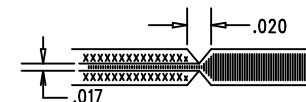



SHOWN FROM COMPONENT SIDE

SIZE	QTY	SYM	PLTD	TOL
0.07	2	+	NO	+/-0.003"
0.015	129	X	YES	+/-0.003"
0.064	16	□	YES	+/-0.003"
0.035	47	◇	YES	+/-0.003"
0.055	5	⊗	YES	+/-0.003"

#### NOTES: UNLESS OTHERWISE SPECIFIED

- FAB PER IPC-A-600
- MATERIAL: EPOXY FIBERGLASS, NEMA GRADE FR-4  
FINISHED THICKNESS TO BE 0.062" +/- .005"  
TOTAL OF 4 LAYERS WITH 2 OZ. CU ON THE  
OUTER LAYERS AND 1 OZ. CU ON THE INNER LAYERS.  
FLAMABILITY RATING: 94 V-0 MINIMUM .
- SIZE: CUT TO DIMENSIONS AND TOLERANCES SHOWN.  
0.00" ARE PRIMARY DATUMS.
- DRILLING: DRILL HOLES PER SCHEDULE. PLATE THROUGH  
HOLES WITH COPPER, 0.001" THICK MIN.  
ALL HOLE SIZES ARE SPECIFIED AFTER PLATING.  
HOLE LOCATION TOLERANCES ARE +/-0.003"  
IN RELATION TO CENTER
- FINISH: SMOBC USING LPI BOTH SIDES, COLOR GREEN.  
WHITE TIN IMMERSION (OMIKRON).  
FOR SILKSCREEN: USE WHITE NON-CONDUCTIVE INK.
- DO NOT ALTER ARTWORK e.g. TO ADD LOGO OR DATE CODE.
- SCORING FOR PANELIZED PCB:



APPROVALS			 <b>LINEAR TECHNOLOGY</b> 1630 MCCARTHY BLVD MILPITAS, CA 95035 PH: (408)432-1900 LTC CONFIDENTIAL- FOR CUSTOMER USE ONLY	
DRAWN	INIT	DATE		
CHECK			<b>TITLE: FABRICATION DRAWING</b> <b>4-CHANNEL, HIGH SPEED, 24-BIT ADC WITH BUFFER</b>	
DESIGN	KIM T.	09-22-05		
ENGR	MARK T.	09-22-05	<b>SIZE A DEMO</b> <b>DC979A * LTC2442CG</b> <b>REV. A</b>	
SCALE = NONE			DES- 0000	SHT 1 of 1