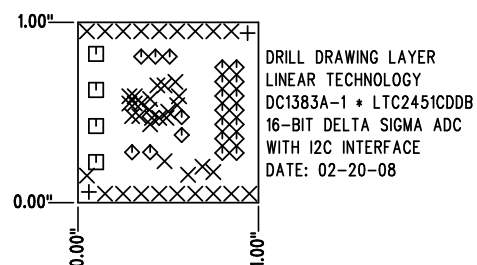


| REVISIONS | | | |
|-----------|-------------------|--------|----------|
| REV | DESCRIPTION | APPR | DATE |
| A-1 | FINAL FABRICATION | LEO C. | 02-20-08 |

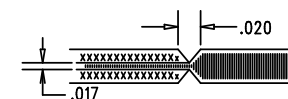



SHOWN FROM COMPONENT SIDE

| SIZE | QTY | SYM | PLATED | TOL |
|-------|-----|-----|--------|-----------|
| 0.07 | 2 | + | NO | +/-0.003" |
| 0.012 | 42 | X | YES | +/-0.003" |
| 0.064 | 4 | □ | YES | +/-0.003" |
| 0.035 | 21 | ◇ | YES | +/-0.003" |

NOTES: UNLESS OTHERWISE SPECIFIED

- FAB PER IPC-A-600
- MATERIAL: EPOXY FIBERGLASS, NEMA GRADE FR-4
FINISHED THICKNESS TO BE 0.062" +/- .005"
TOTAL OF 2 LAYERS WITH 2 OZ. CU ON EACH.
FLAMMABILITY RATING: 94 V-0 MINIMUM .
- SIZE: CUT TO DIMENSIONS AND TOLERANCES SHOWN.
0.00" ARE PRIMARY DATUMS.
- DRILLING: DRILL HOLES PER SCHEDULE. PLATE THROUGH
HOLES WITH COPPER, 0.001" THICK MIN.
ALL HOLE SIZES ARE SPECIFIED AFTER PLATING.
HOLE LOCATION TOLERANCES ARE +/-0.003"
IN RELATION TO CENTER
- FINISH: SMOBC USING LPI BOTH SIDES, COLOR GREEN.
GOLD IMMERSION. (USE LEAD FREE SOLDER FOR PROTOTYPE)
FOR SILKSCREEN: USE WHITE NON-CONDUCTIVE INK.
- DO NOT ALTER ARTWORK e.g. TO ADD LOGO OR DATE CODE.
PAD SIZE CAN BE MODIFIED TO MEET END FINISH.
- PCBS ARE TO BE RoHS COMPLIANT.
- SCORING FOR PANELIZED PCB:



| | | | |
|------------------|-----------------|-------------------------------------------------------------------------------------------------------------------------------------------------------------------------------------------------------------------------------|--|
| APPROVALS | |  LINEAR TECHNOLOGY 1630 MCCARTHY BLVD MILPITAS, CA 95035 PH: (408)432-1900 LTC CONFIDENTIAL- FOR CUSTOMER USE ONLY | |
| DRAWN | INIT DATE | | |
| CHECK | | TITLE: FABRICATION DRAWING 16-BIT DELTA SIGMA ADC WITH I2C INTERFACE | |
| DESIGN | KIM T. 02-20-08 | | |
| ENGR | LEO C. 02-20-08 | SIZE A DEMO REV. A-1 DC1383A-1 * LTC2451CDDb | |
| | | | |
| SCALE = NONE | | SHT 1 of 1 | |