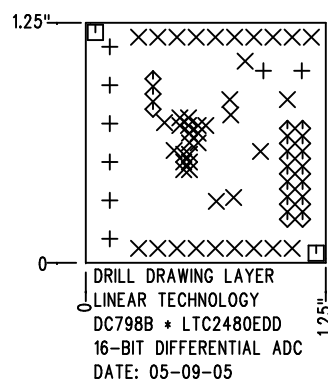


REVISIONS			
REV	DESCRIPTION	APPR	DATE
B	PROTOTYPE RELEASE		

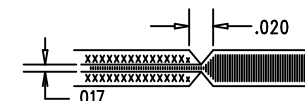



SHOWN FROM COMPONENT SIDE

SIZE	QTY	SYM	PLTD	TOL
0.064	8	+	YES	+/-0.003"
0.015	44	X	YES	+/-0.003"
0.07	2	□	NO	+/-0.003"
0.035	17	◇	YES	+/-0.003"

NOTES: UNLESS OTHERWISE SPECIFIED

- FAB PER IPC-A-600
- MATERIAL: EPOXY FIBERGLASS, NEMA GRADE FR-4
FINISHED THICKNESS TO BE 0.062" +/- .005"
TOTAL OF 4 LAYERS WITH 2 OZ. CU ON THE OUTER LAYERS AND 1 OZ. CU ON THE INNER LAYERS.
FLAMABILITY RATING: 94 V-0 MINIMUM .
- SIZE: CUT TO DIMENSIONS AND TOLERANCES SHOWN.
0.00" ARE PRIMARY DATUMS.
- DRILLING: DRILL HOLES PER SCHEDULE. PLATE THROUGH HOLES WITH COPPER, 0.001" THICK MIN.
ALL HOLE SIZES ARE SPECIFIED AFTER PLATING.
HOLE LOCATION TOLERANCES ARE +/-0.003" IN RELATION TO CENTER
- FINISH: SMOBC USING LPI BOTH SIDES, COLOR GREEN.
WHITE TIN IMMERSION (OMIKRON).
FOR SILKSCREEN: USE WHITE NON-CONDUCTIVE INK.
- DO NOT ALTER ARTWORK e.g. TO ADD LOGO OR DATE CODE.
- SCORING FOR PANELIZED PCB:



APPROVALS			 LINEAR TECHNOLOGY 1630 MCCATHY BLVD MILPITAS, CA 95035 PH: (408)432-1900 LTC CONFIDENTIAL- FOR CUSTOMER USE ONLY	
	INIT	DATE		
DRAWN			TITLE: FABRICATION DRAWING 16-BIT DIFFERENTIAL ADC SIZE A DEMO DC798B * LTC2480EDD REV. B DES- 0000 SHT 1 of 1	
CHECK				
DESIGN	KIM T.	05-09-05		
ENGR	MARK T.	05-09-05		
SCALE = NONE				