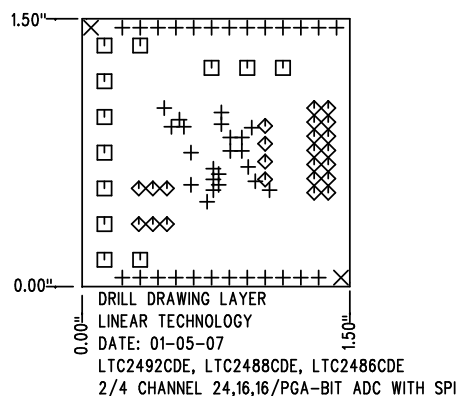
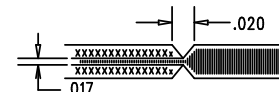


REVISIONS			
REV	DESCRIPTION	APPR	DATE
A-1	FINAL FABRICATION	MT	01-05-07


SIZE	QTY	SYM	PLATED	TOL
0.015	47	+	YES	+/-0.003"
0.07	2	X	NO	+/-0.003"
0.064	12	□	YES	+/-0.003"
0.035	24	◇	YES	+/-0.003"

# **NOTES: UNLESS OTHERWISE SPECIFIED**

1. FAB PER IPC-A-600
2. MATERIAL: EPOXY FIBERGLASS, NEMA GRADE FR-4  
FINISHED THICKNESS TO BE 0.062" +/- .005"  
TOTAL OF 4 LAYERS WITH 2 OZ. CU ON THE  
OUTER LAYERS AND 1 OZ. CU ON THE INNER LAYERS.  
FLAMABILITY RATING: 94 V-0 MINIMUM .
3. SIZE: CUT TO DIMENSIONS AND TOLERANCES SHOWN.  
0.00" ARE PRIMARY DATUMS.
4. DRILLING: DRILL HOLES PER SCHEDULE. PLATE THROUGH  
HOLES WITH COPPER, 0.001" THICK MIN.  
ALL HOLE SIZES ARE SPECIFIED AFTER PLATING.  
HOLE LOCATION TOLERANCES ARE +/-0.003"  
IN RELATION TO CENTER
5. FINISH: SMOBC USING LPI BOTH SIDES, COLOR GREEN.  
WHITE TIN IMMERSION (OMIKRON).  
FOR SILKSCREEN: USE WHITE NON-CONDUCTIVE INK.
6. DO NOT ALTER ARTWORK e.g. TO ADD LOGO OR DATE CODE.
7. SCORING FOR PANELIZED PCB:



SHOWN FROM COMPONENT SIDE

APPROVALS			 <div> 1630 MCCATHY BLVD  MILPITAS, CA 95035  PH: (408)432-1900  LTC CONFIDENTIAL-  FOR CUSTOMER USE ONLY </div>	
	INIT	DATE		
DRAWN			<b>TITLE: FABRICATION DRAWING</b> 2/4 CHANNEL 24,16,16/PGA-BIT ADC WITH SPI	
CHECK				
DESIGN	KIM T.	01-05-07		
ENGR	MARK T.	01-05-07		
			SIZE A	DEMO DC1009A-1 * LTC2400 FAMILY
SCALE = NONE			REV. A-1 SHT 1 of 1	