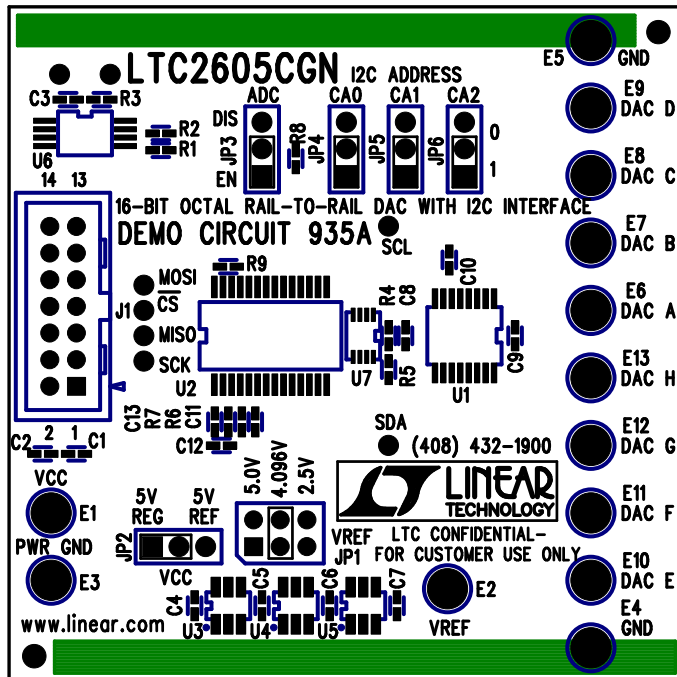


REVISIONS			
REV	DESCRIPTION	APPR	DATE
A	PROTOTYPE RELEASE	MT	06-13-05



NOTES: UNLESS OTHERWISE SPECIFIED

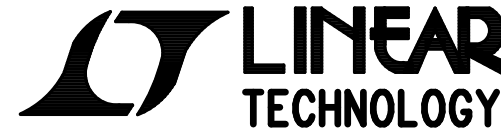
1. WORKMANSHIP SHALL BE IN ACCORDANCE WITH IPC-A-610.
2. INSTALL SHUNTS ON JP1 PIN 2 & 3, JP2-JP6 PIN 1 & 2.
3. PARTS TO OMIT WILL BE SPECIFIED ON THE BILL OF MATERIALS. LOCATIONS OF OMITTED PARTS SHALL BE FREE OF SOLDER. MASK THE SOLDER STENCIL WHERE SMT PARTS ARE OMITTED.
4. DEPANELIZE BOARDS AFTER ASSEMBLY AND ROUTE-OUT THE BREAKOUT TABS ON FOUR SIDES OF THE BOARD EDGE.
5. ASSY PROCESSES SHALL INCLUDE: REFLOW SOLDER TOP SIDE SMD.

TOP SILKSCREEN
 LINEAR TECHNOLOGY
 DC935A * LTC2605CGN
 16-BIT OCTAL RAIL-TO-RAIL
 DAC WITH I2C INTERFACE
 DATE: 08-10-05

APPROVALS

	INIT	DATE
DRAWN		
CHECK		
DESIGN	KIM T.	08-10-05
ENGR	MARK T.	08-10-05

SCALE = NONE



1630 MCCARTHY BLVD
 MILPITAS, CA 95035
 PH: (408)432-1900
 LTC CONFIDENTIAL-
 FOR CUSTOMER USE ONLY

TITLE: TOP ASSEMBLY DRAWING

16-BIT OCTAL RAIL-TO-RAIL DAC WITH I2C INTERFACE

SIZE	DEMO	REV.
A	DC935A-LTC2605CGN	A

DES- 0000

SHT 1 of 1