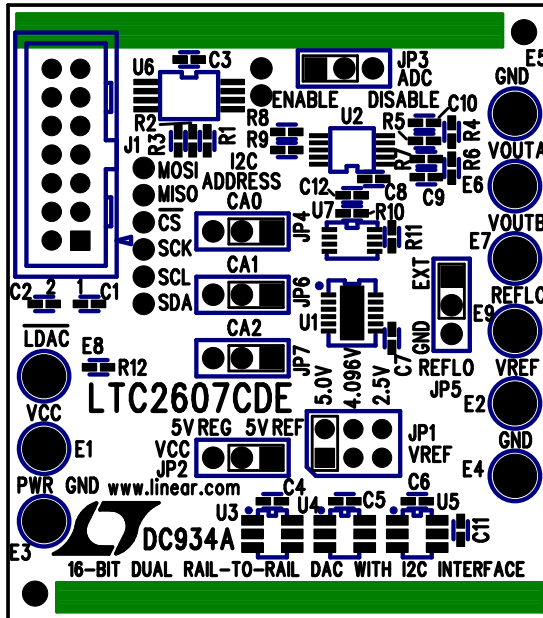


REVISIONS

REV	DESCRIPTION	APPR	DATE
A	PROTOTYPE RELEASE	MT	06-07-05



TOP SILKSCREEN
 LINEAR TECHNOLOGY
 DC934A * LTC2607CDE
 16-BIT DUAL RAIL-TO-RAIL
 DAC WITH I2C INTERFACE
 DATE: 08-10-05

NOTES: UNLESS OTHERWISE SPECIFIED

1. WORKMANSHIP SHALL BE IN ACCORDANCE WITH IPC-A-610.
2. INSTALL SHUNTS ON JP1-JP7 PIN 1 AND 2.
3. PARTS TO OMIT WILL BE SPECIFIED ON THE BILL OF MATERIALS. LOCATIONS OF OMITTED PARTS SHALL BE FREE OF SOLDER. MASK THE SOLDER STENCIL WHERE SMT PARTS ARE OMITTED.
4. DEPANELIZE BOARDS AFTER ASSEMBLY AND ROUTE-OUT THE BREAKOUT TABS ON FOUR SIDES OF THE BOARD EDGE.
5. ASSY PROCESSES SHALL INCLUDE: REFLOW SOLDER TOP SIDE SMD.

APPROVALS

	INIT	DATE
DRAWN		
CHECK		
DESIGN	KIM T.	08-10-05
ENGR	MARK T.	08-10-05

SCALE = NONE



LINEAR
TECHNOLOGY

1630 MCCARTHY BLVD
 MILPITAS, CA 95035
 PH: (408)432-1900
 LTC CONFIDENTIAL-
 FOR CUSTOMER USE ONLY

TITLE: TOP ASSEMBLY DRAWING

16-BIT DUAL RAIL-TO-RAIL DAC WITH I2C INTERFACE

SIZE	DEMO	REV.
A	DC934A-LTC2607CDE	A

DES- 0000

SHT 1 of 1