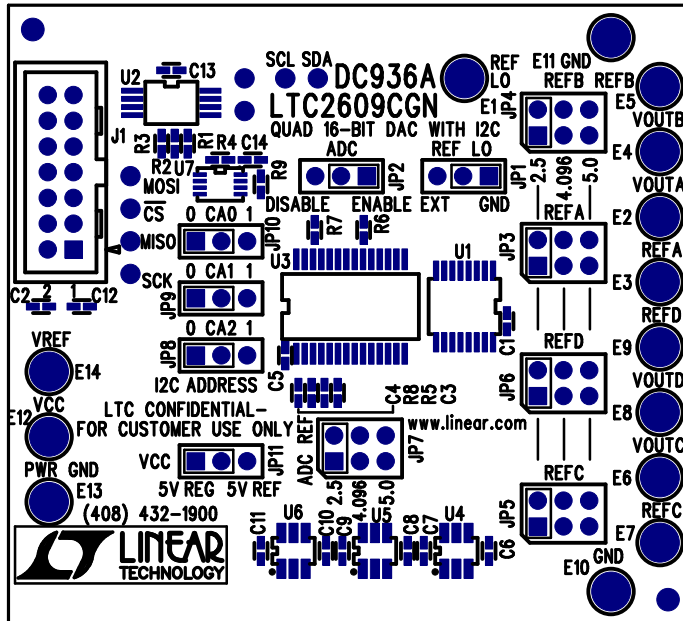


# REVISIONS

REV	DESCRIPTION	APPR	DATE
A-1	PRODUCTION	MT	09-21-05



## NOTES: UNLESS OTHERWISE SPECIFIED

1. WORKMANSHIP SHALL BE IN ACCORDANCE WITH IPC-A-610.
2. INSTALL SHUNTS ON JP1-JP11 PIN 1 AND 2.
3. PARTS TO OMIT WILL BE SPECIFIED ON THE BILLS OF MATERIAL. LOCATIONS OF OMITTED PARTS SHALL BE FREE OF SOLDER. MASK THE SOLDER STENCIL WHERE SMT PARTS ARE OMITTED.
4. DEPANELIZE BOARDS AFTER ASSEMBLY AND ROUTE-OUT THE BREAKOUT TABS ON FOUR SIDES OF THE BOARD EDGE.
5. ASSY PROCESSES SHALL INCLUDE: REFLOW SOLDER TOP SIDE SMD.

## APPROVALS

	INIT	DATE
DRAWN		
CHECK		
DESIGN	KIM T.	09-21-05
ENGR	MARK T.	09-21-05

SCALE = NONE



1630 MCCATHY BLVD  
MILPITAS, CA 95035  
PH: (408)432-1900  
LTC CONFIDENTIAL-  
FOR CUSTOMER USE ONLY

TITLE: TOP ASSEMBLY DRAWING  
**QUAD 16-BIT DAC WITH I2C**

SIZE A	DEMO DC936A-1 * LTC2609CGN	REV. A-1
-----------	-------------------------------	-------------

DES- 0000

SHT 1 of 1