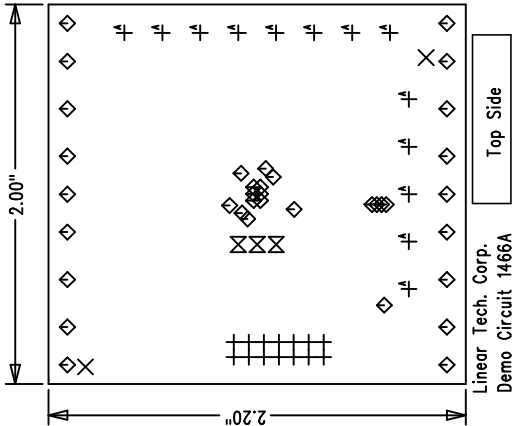
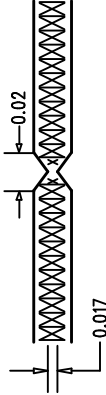


| REVISIONS | | |
|-----------|-------------|------|
| REV | DESCRIPTION | DATE |
| | | |

NOTES : Unless Otherwise Specified

1. FAB PER IPC-A-600.
2. MATERIAL: EPOXY FIBERGLASS, NEMA GRADE FR-4.
2 OZ. COPPER FINISH ON OUTER LAYERS.
1 OZ. COPPER FINISH ON INNER LAYERS.
THICKNESS .062 +/--.006 TOTAL OF 4 LAYERS.
FLAMMABILITY RATING: 94 V-0 MINIMUM .
3. SIZE: DIMENSIONS SHOWN AND TOLERANCES TOL: +/-0.010
0.000 ARE PRIMARY DATUMS.
4. DRILLING: DRILL HOLES PER SCHEDULE. PLATE THROUGH
HOLES WITH COPPER. .001 INCH THICK MIN. ALL
HOLE SIZES ARE SPECIFIED AFTER PLATING.
HOLE LOCATION TOLERANCES ARE +/--.003
INCH IN RELATION TO CENTER
5. FINISH: SMOBC USING LPI BOTH SIDES COLOR GREEN.
GOLD IMMERSION PLATING
6. SILKSCREEN : BOTH SIDES USING WHITE NON-CONDUCTIVE EPOXY INK.
7. DO NOT ALTER ARTWORK TO ADD LOGO OR DATE CODE
BUT YOU MAY MODIFY PAD SIZE TO MEET END FINISH.
8. PCBs ARE TO BE RoHS COMPLIANT.
9. SCORING:



| SIZE | QTY | SYM | PLATED | TOL |
|---------|-----|-----|--------|----------|
| 0.07 | 2 | X | NO | +/-0.003 |
| 0.01 | 36 | ◇ | YES | +/-0.003 |
| 0.035 | 3 | ⊠ | YES | +/-0.003 |
| 0.03543 | 14 | + | YES | +/-0.003 |
| 0.065 | 13 | ⊕ | YES | +/-0.003 |

Fabrication Drawing

UNLESS OTHERWISE SPECIFIED
DIMENSIONS ARE IN INCHES
TOLERANCES ON ANGLE ± 1
2 PLACE ± .01 3 PLACE ± .005
INTERPRET DIM AND TOL
PER ASME Y14.5M - 1994

| APPROVALS | | LINEAR TECHNOLOGY | |
|-----------|----------|-------------------|--|
| DRAWN | INT | DATE | 1630 McCarthy Blvd. Milpitas, CA 95035 PH: (408)432-1900 |
| CHECK | | | |
| DESIGN | Helen | 8/11/08 | TITLE: LTC2636IMS-LZ12 / LTC2636HMS-LMI12 |
| ENGR | Leo Chen | 8/11/08 | LTC2636CMS-H712 / LTC2636HMS-HMI12 |
| | | | 12-Bit, Octal SPI DAC with Internal Reference |
| | | | SIZE A DEMO DC1466A-A/B/C/D REV. A |
| | | | SCALE = NONE DES-250 SHEET 1 of 1 |