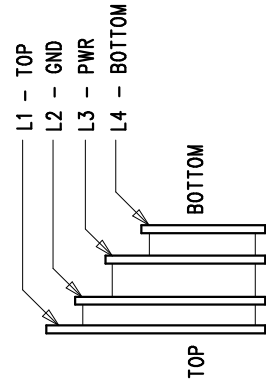


REVISION HISTORY			
ECO	REV	DESCRIPTION	APPR
1	1	PRODUCTION	Leo C.
			10-10-12

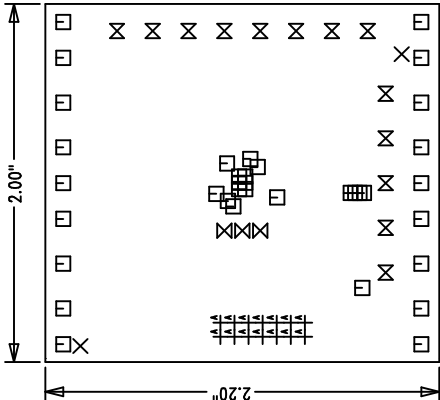
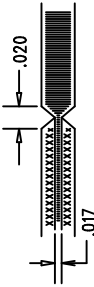
LAYER STRUCTURE



NOTES: UNLESS OTHERWISE SPECIFIED

1. FAB PER IPC-A-600.
2. MATERIAL: -EPOXY FIBERGLASS, NEMA GRADE FR-4  
-FINISHED THICKNESS TO BE 0.062" +/- .005"  
-TOTAL OF 4 LAYERS WITH 2 OZ. CU ON THE OUTER LAYERS  
AND 1 OZ. CU ON THE INNER LAYERS.  
-FLAMMABILITY RATING: 94 V-0 MINIMUM.
3. SIZE: CUT TO DIMENSIONS AND TOLERANCES SHOWN.  
0.00" ARE PRIMARY DATUMS.
4. DRILLING: -DRILL HOLES PER SCHEDULE. PLATE THROUGH  
HOLES WITH COPPER, 0.001" THICK MIN.  
-ALL HOLE SIZES ARE SPECIFIED AFTER PLATING.  
-HOLE LOCATION TOLERANCES ARE +/-0.003"  
IN RELATION TO CENTER
5. FINISH: -SN08C USING LPI BOTH SIDES, COLOR GREEN.  
-GOLD IMMERSION BOTH SIDES.  
(LEAD FREE SOLDER CAN BE USED FOR PROTOTYPE)  
-FOR SILKSCREEN: BOTH SIDES USE WHITE NON-CONDUCTIVE INK.  
6. DO NOT ALTER ARTWORK e.g. TO ADD LOGO OR DATE CODE.

- PAD SIZE CAN BE MODIFIED TO MEET END FINISH.  
7. PCBs ARE TO BE RoHS COMPLIANT.  
8. SCORING FOR PANELIZED PCB:



LINEAR TECHNOLOGY CORP.  
DC1466B  
DATE: 10-10-12

SIZE	QTY	SYM	PLATED	TOL
0.07	2	X	NO	+/-0.003
0.01	36	□	YES	+/-0.003
0.035	3	⊗	YES	+/-0.003
0.065	13	⊗	YES	+/-0.003
0.03543	14	⊕	YES	+/-0.003

UNLESS OTHERWISE SPECIFIED		APPROVALS	
DIMENSIONS ARE IN INCHES TOLERANCES: 0.XXX" = ±0.01" 0.XX" = ±0.005" INTERPRET DIM AND TOL PER ASME Y14.5M-1994 THIRD ANGLE PROJECTION		PCB DES.	HZ
		APP ENG.	Leo C.
		TITLE: FABRICATION DRAWING 12-BIT, OCTAL SPI DAC WITH INTERNAL REFERENCE	
		SIZE	IC NO. LTC2636 FAMILY
		N/A	REV 1
		SCALE = NONE	FILENAME: DC1466B-1PCB
		SHT 1 OF 1	

1830 MCCARTHY BLVD  
MILPITAS, CA 95035  
TEL: (408) 253-7000  
FAX: (408) 253-7000  
LTC CONFIDENTIAL -  
FOR CUSTOMER USE ONLY

