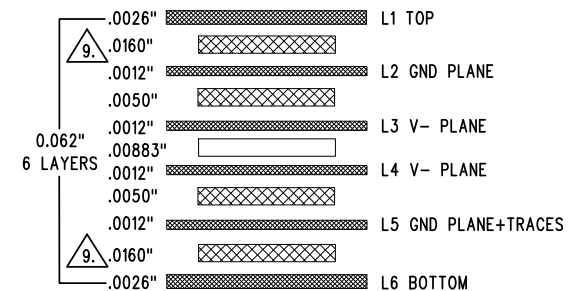


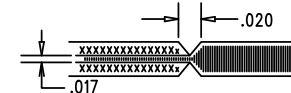
REVISION HISTORY				
ECO	REV	DESCRIPTION	APP. ENG.	DATE
-	3	3RD PROTOTYPE	MARK T.	01-09-14

LAYER STRUCTURE



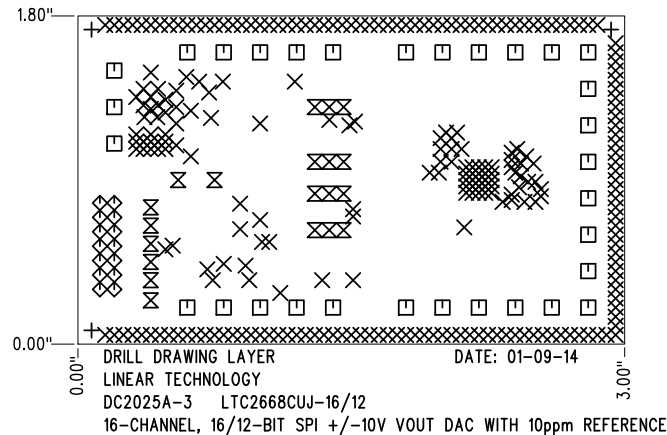
NOTES: UNLESS OTHERWISE SPECIFIED

- FAB PER IPC-A-600.
- MATERIAL: -LEAD FREE ASSEMBLY COMPLIANT, ISOLA FR-370HR OR EQUIVALENT.
-FINISHED THICKNESS TO BE 0.062" +/- .005"
-TOTAL OF 6 LAYERS WITH 2 OZ. CU ON THE OUTER LAYERS AND 1 OZ. CU ON THE INNER LAYERS.
-FLAMMABILITY RATING: 94 V-0 MINIMUM.
- SIZE: CUT TO DIMENSIONS AND TOLERANCES SHOWN.
0.00" ARE PRIMARY DATUMS.
- DRILLING: -DRILL HOLES PER SCHEDULE. PLATE THROUGH HOLES WITH COPPER, 0.001" THICK MIN.
-ALL HOLE SIZES ARE SPECIFIED AFTER PLATING.
-HOLE LOCATION TOLERANCES ARE +/-0.003" IN RELATION TO CENTER
- FINISH: -SMOBC USING LPI BOTH SIDES, COLOR GREEN.
-GOLD IMMERSION BOTH SIDES.
-FOR SILKSCREENS: USE WHITE NON-CONDUCTIVE INK.
- DO NOT ALTER ARTWORK e.g. TO ADD LOGO OR DATE CODE.
PAD SIZE CAN BE MODIFIED TO MEET END FINISH.
- PCBS ARE TO BE RoHS COMPLIANT.
- SCORING FOR PANELIZED PCB (PRODUCTION FAB ONLY):



9. SUBJECT TO CHANGE BY MANUFACTURER, DEPENDING ON DIELECTRIC CONSTANT DEVIATIONS. PLEASE CONSULT LTC.

SHOWN FROM TOP SIDE



SIZE	QTY	SYM	PLATED	TOL
0.07	3	+	NO	+/-0.003"
0.012	258	X	YES	+/-0.003"
0.064	31	□	YES	+/-0.003"
0.04	14	◇	YES	+/-0.003"
0.035	20	⊗	YES	+/-0.003"

UNLESS OTHERWISE SPECIFIED		APPROVALS		<div> <div>1630 MCCARTHY BLVD</div> <div>MILPITAS, CA 95035</div> <div>PH: (408)432-1900</div> <div>www.linear.com</div> <div>LTC CONFIDENTIAL- FOR CUSTOMER USE ONLY</div> </div>	
DIMENSIONS ARE IN INCHES TOLERANCES: 0.XX" = ±0.01" 0.XXX" = ±0.005" INTERPRET DIM AND TOL PER ASME Y14.5M-1994 THIRD ANGLE PROJECTION		PCB DES.	KIM T.		
		APP ENG.	MARK T.	TITLE: FABRICATION DRAWING	
				16-CHANNEL, 16/12-BIT SPI +/-10V VOUT DAC WITH 10ppm REFERENCE	
				SIZE	IC NO. LTC2668CUJ-16/12
				N/A	DEMO CIRCUIT 2025A
		SCALE = NONE		REV	3
		FILENAME: DC2025A-3.PCB		SHT 1 OF 1	