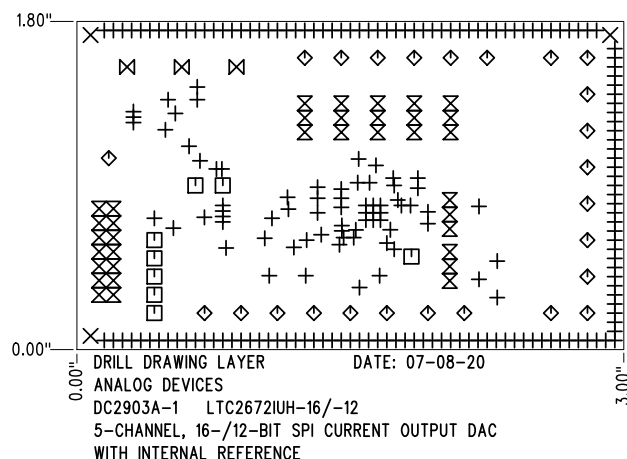


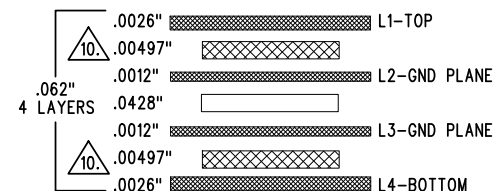
REVISION HISTORY				
ECO	REV	DESCRIPTION	APP. ENG.	DATE
-	1	PRODUCTION	CLARENCE M.	07-08-20

# SHOWN FROM TOP SIDE



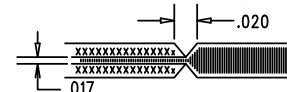
SIZE	QTY	SYM	PLATED	TOL
0.012	216	+	YES	+/-0.003"
0.07	3	×	NO	+/-0.003"
0.04	8	□	YES	+/-0.003"
0.065	25	◇	YES	+/-0.003"
0.035	35	⊠	YES	+/-0.003"
0.095	3	⊞	YES	+/-0.003"

# LAYER STRUCTURE



# NOTES: UNLESS OTHERWISE SPECIFIED

- FAB PER IPC-A-600.
- MATERIAL: -LEAD FREE ASSEMBLY COMPLIANT, ISOLA FR-370HR OR EQUIVALENT.  
-FINISHED THICKNESS TO BE 0.062" +/- .005"  
-TOTAL OF 4 LAYERS WITH 2 OZ. CU ON THE OUTER LAYERS AND 1 OZ. CU ON THE INNER LAYERS.  
-FLAMMABILITY RATING: 94 V-0 MINIMUM.
- SIZE: CUT TO DIMENSIONS AND TOLERANCES SHOWN.  
0.00" ARE PRIMARY DATUMS.
- DRILLING: -DRILL HOLES PER SCHEDULE. PLATE THROUGH HOLES WITH COPPER, 0.001" THICK MIN.  
-ALL HOLE SIZES ARE SPECIFIED AFTER PLATING.  
-HOLE LOCATION TOLERANCES ARE +/-0.003" IN RELATION TO CENTER
- FINISH: -SMOBC USING LPI BOTH SIDES, COLOR GREEN.  
-GOLD IMMERSION BOTH SIDES.  
-FOR SILKSCREENS: USE WHITE NON-CONDUCTIVE INK.
- DO NOT ALTER ARTWORK e.g. TO ADD LOGO OR DATE CODE.  
PAD SIZE CAN BE MODIFIED TO MEET END FINISH.
- PCBS ARE TO BE RoHS COMPLIANT.
- SCORING FOR PANELIZED PCB (PRODUCTION FAB ONLY):



- SUBJECT TO CHANGE BY MANUFACTURER, DEPENDING ON DIELECTRIC CONSTANT DEVIATIONS. PLEASE CONSULT LTC.

<b>UNLESS OTHERWISE SPECIFIED</b> DIMENSIONS ARE IN INCHES TOLERANCES: 0.XX" = ±0.01" 0.XXX" = ±0.005" INTERPRET DIM AND TOL PER ASME Y14.5M-1994 THIRD ANGLE PROJECTION 	<b>APPROVALS</b>		 AHEAD OF WHAT'S POSSIBLE™ 2555 AUGUSTINE DRIVE SANTA CLARA, CA 95054 www.analog.com
	PCB DES.	KIM T.	
	APP ENG.	CLARENCE M.	
	TITLE: FABRICATION DRAWING		
	5-CHANNEL, 16-/12-BIT SPI CURRENT OUTPUT DAC WITH INTERNAL REFERENCE		
	SIZE	IC NO.	LTC2672IUH-16/-12
	N/A		DEMO CIRCUIT 2903A
	SCALE = NONE		REV 1
	FILENAME: DC2903A-1.PCB		SHT 1 OF 1