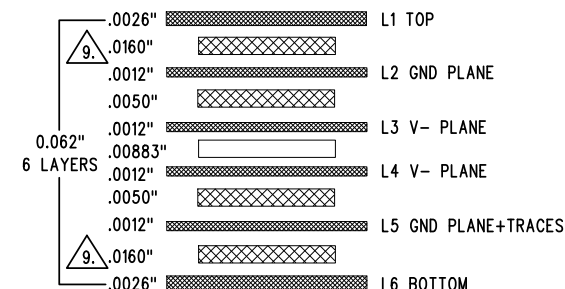


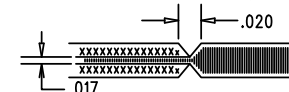
REVISION HISTORY				
ECO	REV	DESCRIPTION	APP. ENG.	DATE
-	2	PRODUCTION	CLARENCE M.	04-09-20

## LAYER STRUCTURE



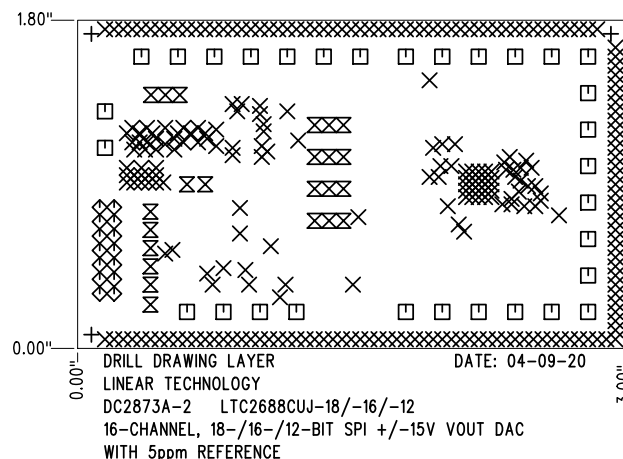
## NOTES: UNLESS OTHERWISE SPECIFIED

- FAB PER IPC-A-600.
- MATERIAL: -LEAD FREE ASSEMBLY COMPLIANT, ISOLA FR-370HR OR EQUIVALENT.  
-FINISHED THICKNESS TO BE 0.062" +/- .005"  
-TOTAL OF 6 LAYERS WITH 2 OZ. CU ON THE OUTER LAYERS AND 1 OZ. CU ON THE INNER LAYERS.  
-FLAMMABILITY RATING: 94 V-0 MINIMUM.
- SIZE: CUT TO DIMENSIONS AND TOLERANCES SHOWN. 0.00" ARE PRIMARY DATUMS.
- DRILLING: -DRILL HOLES PER SCHEDULE. PLATE THROUGH HOLES WITH COPPER, 0.001" THICK MIN.  
-ALL HOLE SIZES ARE SPECIFIED AFTER PLATING.  
-HOLE LOCATION TOLERANCES ARE +/-0.003" IN RELATION TO CENTER
- FINISH: -SMOBC USING LPI BOTH SIDES, COLOR GREEN.  
-GOLD IMMERSION BOTH SIDES.  
-FOR SILKSCREENS: USE WHITE NON-CONDUCTIVE INK.
- DO NOT ALTER ARTWORK e.g. TO ADD LOGO OR DATE CODE. PAD SIZE CAN BE MODIFIED TO MEET END FINISH.
- PCBS ARE TO BE RoHS COMPLIANT.
- SCORING FOR PANELIZED PCB (PRODUCTION FAB ONLY):


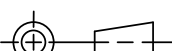


9. SUBJECT TO CHANGE BY MANUFACTURER, DEPENDING ON DIELECTRIC CONSTANT DEVIATIONS. PLEASE CONSULT LTC.

## SHOWN FROM TOP SIDE



SIZE	QTY	SYM	PLATED	TOL
0.07	3	+	NO	+/-0.003"
0.012	268	X	YES	+/-0.003"
0.064	31	□	YES	+/-0.003"
0.04	14	◇	YES	+/-0.003"
0.035	23	⊗	YES	+/-0.003"

UNLESS OTHERWISE SPECIFIED		APPROVALS		<div>ANALOG DEVICES</div> <div>AHEAD OF WHAT'S POSSIBLE™</div>		2555 AUGUSTINE DRIVE SANTA CLARA, CA 95054 www.analog.com	
DIMENSIONS ARE IN INCHES TOLERANCES: 0.XX" = ±0.01" 0.XXX" = ±0.005"  INTERPRET DIM AND TOL PER ASME Y14.5M-1994 THIRD ANGLE PROJECTION  		PCB DES.	KIM T.	TITLE: FABRICATION DRAWING  16-CHANNEL, 18-/16-/12-BIT SPI +/-15V VOUT DAC WITH 5ppm REFERENCE			
		APP ENG.	CLARENCE M.				
				SIZE    IC NO. LTC2688CUJ-18-/16-/12 N/A    DEMO CIRCUIT 2873A			
SCALE = NONE		FILENAME: DC2873A-2.PCB		SHT 1 OF 1			