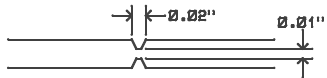


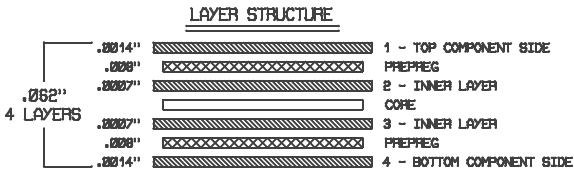
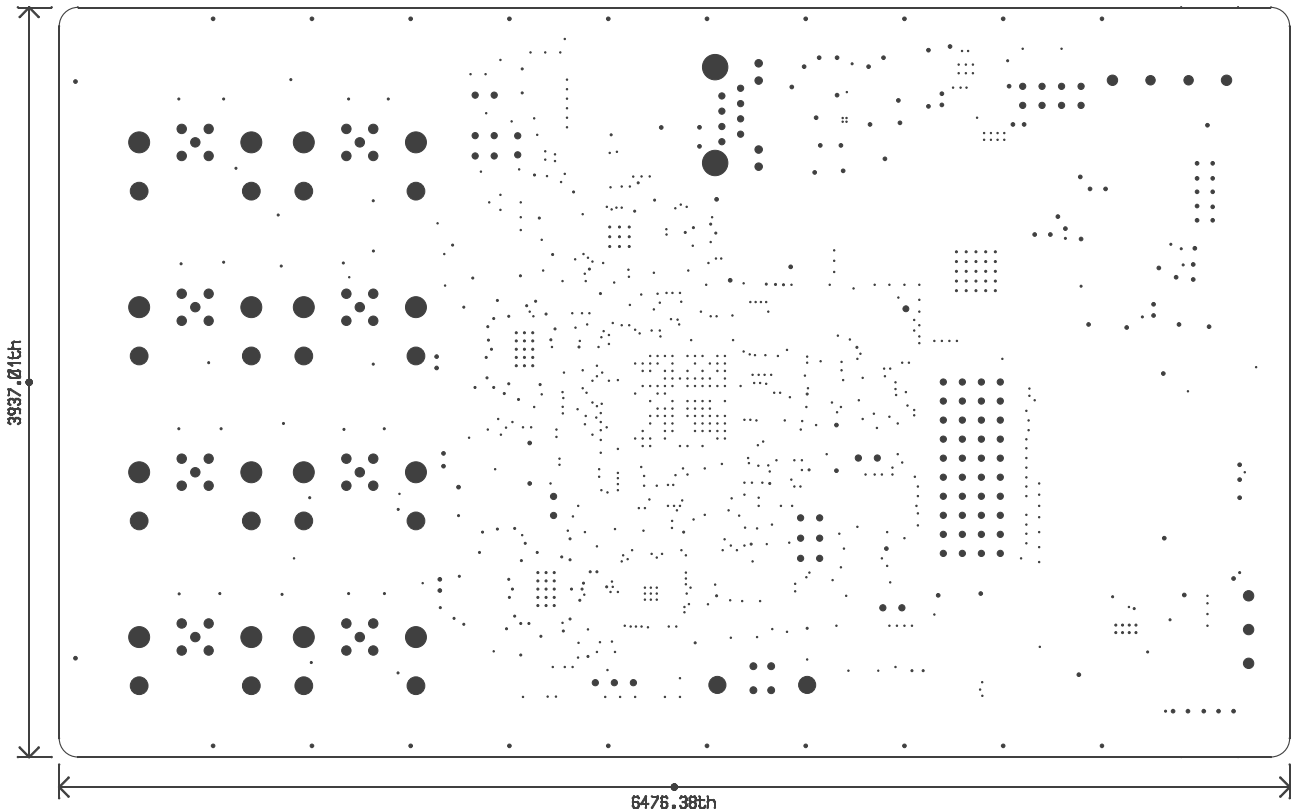
REVISION HISTORY				
ECO	REV	DESCRIPTION	APPROVED	DATE
-	3	3RD PROTOTYPE	KEITH B.	12-2-14



NOTES: UNLESS OTHERWISE SPECIFIED

1. FAB PER IPC-A-600
2. MATERIAL:-LEAD FREE ASSEMBLY COMPLIANT, ISOLA FR-370HR OR EQUIVALENT.  
-FINISHED THICKNESS TO BE  $0.062'' \pm 0.005''$ .  
-TOTAL OF 4 LAYERS WITH 1 OZ. CU ON THE OUTER LAYERS AND 0.5 OZ. CU ON THE INNER LAYERS.  
-FLAMMABILITY RATING: 94 V-0 MINIMUM.
3. SIZE: CUT TO DIMENSIONS AND TOLERANCES SHOWN
4. DRILLING:-DRILL HOLES PER SCHEDULE. PLATE THROUGH HOLES WITH COPPER,  $0.001''$  THICK MIN.  
-ALL HOLE SIZES ARE SPECIFIED AFTER PLATING.  
-HOLE LOCATION TOLERANCES ARE  $\pm 0.003''$  IN RELATION TO CENTER.
5. FINISH:-SMOBC USING LPI BOTH SIDES, COLOR GREEN.  
-GOLD IMMERSION (ENIG) BOTH SIDES.  
-SILKSCREEN BOTH SIDES WITH WHITE NON-CONDUCTIVE INK.
6. DO NOT ALTER ARTWORK e.g. TO ADD LOGO OR DATE CODE. PAD SIZE MAY BE MODIFIED TO MEET END FINISH.
7. PCBs ARE TO BE RoHS COMPLIANT.
8. SCORING FOR PANELIZED PCB, SCORING ANGLE 30 DEG.:



SHOWN FROM COMPONENT SIDE



UNLESS OTHERWISE SPECIFIED		APPROVALS		 <div>1630 McCarthy Blvd. Milpitas, CA 95035 Phone: (408) 432-1900 Fax: (408) 434-0507 www.linear.com</div>		LTC CONFIDENTIAL	
DIMENSIONS ARE IN INCHES TOLERANCES: 0.XX" = +/- 0.01" 0.XXX" = +/- 0.005" INTERPRET DIM AND TOL PER ASME Y14.5M-1994		PCB DES.	TECONCEPT			TITLE: FABRICATION DRAWING IO-LINK DEMONSTRATOR	
		APP ENG.	KEITH B.				
THIRD ANGLE PROJECTION				SIZE	IC NO.	LTC2874IUHF	REV.
				N/A		DEMO CIRCUIT 2228A	3
		SCALE = 1:1		DATE: Tuesday December 2, 2014		SHEET 1 OF 1	