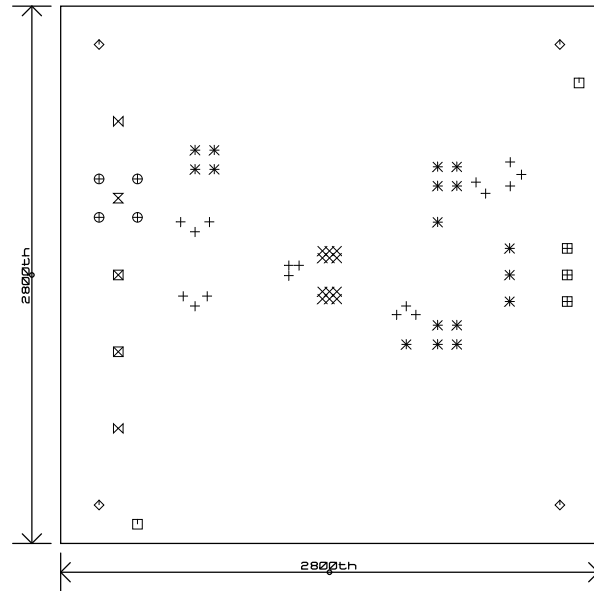


SHOWN FROM COMPONENT SIDE

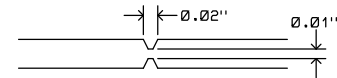


## REVISION HISTORY

ECO	REV	DESCRIPTION	APPROVED	DATE
-	2	2ND PROTOTYPE	KEITH B.	6-24-14

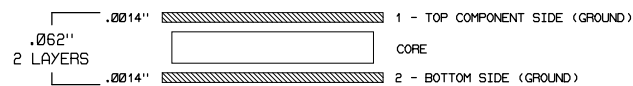
## NOTES: UNLESS OTHERWISE SPECIFIED


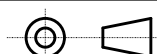
- FAB PER IPC-A-600
- MATERIAL: -LEAD FREE ASSEMBLY COMPLIANT, ISOLA FR-370HR OR EQUIVALENT.  
-FINISHED THICKNESS TO BE 0.062" +/- .005".  
-TOTAL OF 2 LAYERS WITH 1 OZ. CU  
-FLAMMABILITY RATING: 94 V-0 MINIMUM.
- SIZE: CUT TO DIMENSIONS AND TOLERANCES SHOWN
- DRILLING: -DRILL HOLES PER SCHEDULE. PLATE THROUGH HOLES WITH COPPER, 0.001" THICK MIN.  
-ALL HOLE SIZES ARE SPECIFIED AFTER PLATING.  
-HOLE LOCATION TOLERANCES ARE +/- 0.003" IN RELATION TO CENTER.
- FINISH: -SMOBC USING LPI BOTH SIDES, COLOR GREEN.  
-GOLD IMMERSION BOTH SIDES.  
-SILKSCREEN BOTH SIDES WITH WHITE NON-CONDUCTIVE INK.
- DO NOT ALTER ARTWORK e.g. TO ADD LOGO OR DATE CODE.  
PAD SIZE MAY BE MODIFIED TO MEET END FINISH.
- PCBS ARE TO BE RoHS COMPLIANT.
- SCORING FOR PANELIZED PCB, SCORING ANGLE 30 DEG.:



SIZE	QTY	SYM	PLATED	TOL
0.010"	17	+	YES	+/-0.003"
0.015"	12	X	YES	+/-0.003"
0.040"	17	*	YES	+/-0.003"
0.050"	3	田	YES	+/-0.003"
0.052"	1	⊗	YES	+/-0.003"
0.066"	2	⊠	YES	+/-0.003"
0.070"	2	□	NO	+/-0.003"
0.072"	4	⊕	YES	+/-0.003"
0.096"	2	⊞	YES	+/-0.003"
0.187"	4	◇	NO	+/-0.003"

### LAYER STRUCTURE



UNLESS OTHERWISE SPECIFIED		APPROVALS		<div></div> <div>1630 McCarthy Blvd. Milpitas, CA 95035 Phone: (408) 432-1900 Fax: (408) 434-0507 <a href="http://www.linear.com">www.linear.com</a></div> <div>LTC CONFIDENTIAL FOR CUSTOMER USE ONLY</div>	
DIMENSIONS ARE IN INCHES TOLERANCES: 0.XX" = +/- 0.01" 0.XXX" = +/- 0.005" INTERPRET DIM AND TOL PER ASME Y14.5M-1994		PCB DES.	KWB		
		APP ENG.	KWB	TITLE: FABRICATION DRAWING 60V FAULT PROTECTED 25KV ESD CAN TRANSCEIVER	
THIRD ANGLE PROJECTION				SIZE	IC NO.
				N/A	LTC2875HDD DEMO CIRCUIT 2063A
		SCALE = NONE		DATE: Tuesday June 24, 2014	REV. 2
				SHEET 1 OF 1	