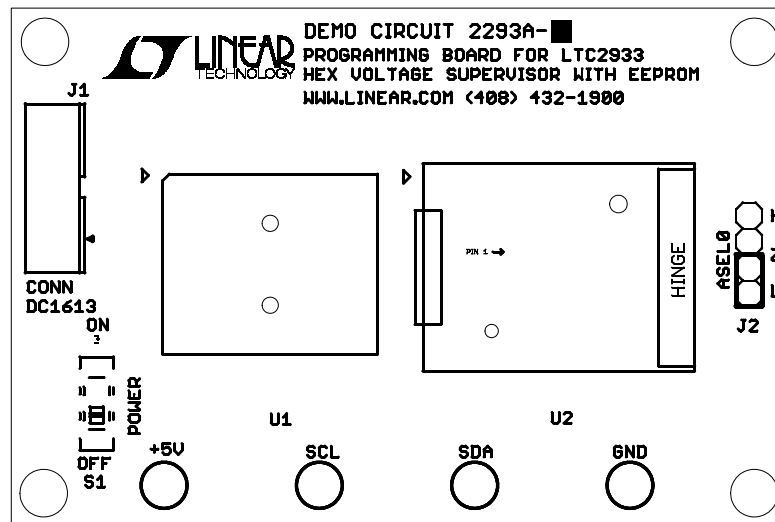


ECO	REV	DESCRIPTION	APPROVED	DATE
-	1	PRODUCTION	NATHAN E.	08-30-15

1. WORKMANSHIP SHALL BE IN ACCORDANCE WITH IPC-A-610.
2. PARTS TO OMIT WILL BE SPECIFIED ON THE BILL OF MATERIALS.
MASK THE SOLDER STENCIL WHERE SMT PARTS ARE OMITTED.
3. DEPANELIZE BOARDS AFTER ASSEMBLY AND ROUTE-OUT
THE BREAKOUT TABS ON 4 SIDES OF THE BOARD EDGE.
4. ASSY PROCESS SHALL INCLUDE: REFLOW SOLDER TOP AND BOTTOM SIDE SMD.
5. DO NOT APPLY ANY KIND OF ASSEMBLY STAMP OR QA STAMP
ON ANY BOARD.
6. IN

Diagram illustrating the assembly of the PCB. The PCB is shown with a hatched pattern, indicating it is a cross-section. The top side of the PCB is labeled "TOP SIDE" and the bottom side is labeled "BOTTOM SIDE". The PCB is mounted on a "4X STANDOFF, NYLON SNAP ON" which is attached to the "PCB".



TURRETS : MILL-MAX

PCB : TOP


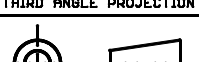
PCB : BOTTOM

ANODE PIN 2

CATHODE PIN 1

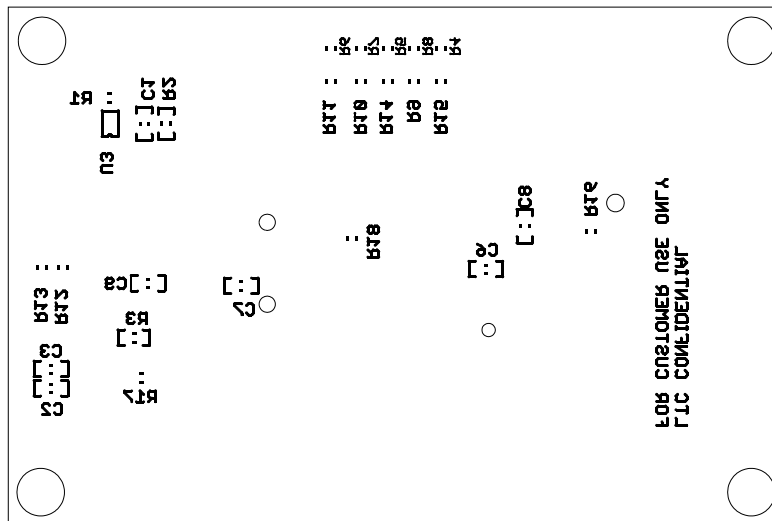
+


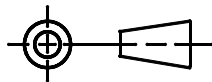
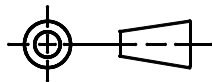
-

UNLESS OTHERWISE SPECIFIED DIMENSIONS ARE IN INCHES TOLERANCES ON ANGLE +/- 1° 0.XXX" = +/- 0.01" 0.XXX" = +/- 0.005" INTERPRET DIM AND TOL PER ASME Y14.5M-1994	APPROVALS				1638 MCCARTHY BLVD. MILPITAS, CA 95033 PH: (408) 432-1800 LTC CONFIDENTIAL FOR CUSTOMER USE ONLY		
		NAME	DATE				
	PCB DES.	R.S.	88-38-15				
	ENG	NATHAN E.	88-38-15				
THIRD ANGLE PROJECTION				TITLE: TOP ASSEMBLY DRAWING PROGRAMMABLE HEX VOLTAGE SUPERVISOR WITH EEPROM			
							
DO NOT SCALE DRAWING	SCALE: NONE	SIZE	IC NO.	LTC2933	REV		
		N/A		DEMO CIRCUIT 2293A	1		
		FILENAME: DC2293		SHEET 1 OF 13			

REVISION HISTORY

ECO	REV	DESCRIPTION	APPROVED	DATE
-	1	PRODUCTION	NATHAN E.	08-30-15

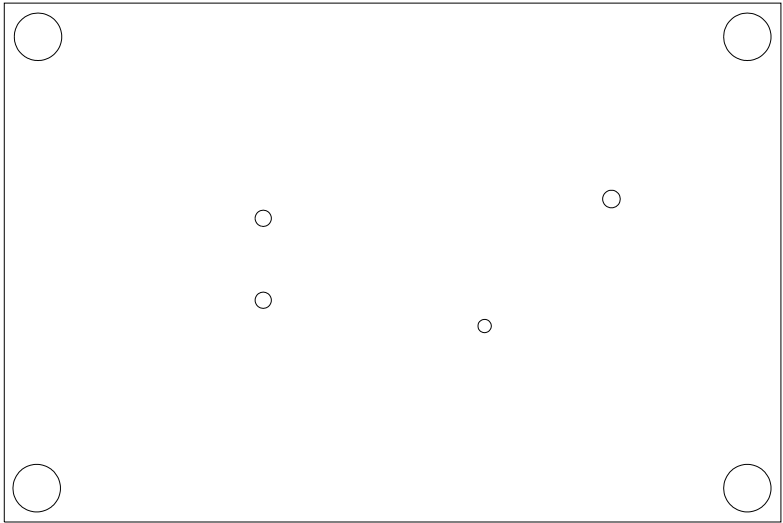
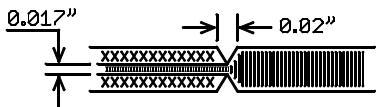


UNLESS OTHERWISE SPECIFIED DIMENSIONS ARE IN INCHES TOLERANCES ON ANGLE +/- 1° 0.XX" = +/- 0.01" 0.XXX" = +/- 0.005" INTERPRET DIM AND TOL PER ASME Y14.5M-1994	APPROVALS			 1630 MCCARTHY BLVD. MILPITAS, CA 95033 PH: (408) 432-1988 LTC CONFIDENTIAL FOR CUSTOMER USE ONLY
	PCB DES.	NAME	DATE	
	ENG	NATHAN E.	08-30-15	
THIRD ANGLE PROJECTION				TITLE: BOTTOM ASSEMBLY DRAWING PROGRAMMABLE HEX VOLTAGE SUPERVISOR WITH EEPROM
	SIZE	IC NO.	REV	
	N/A	LTC2933	1	
		DEMO CIRCUIT 2293A		
DO NOT SCALE DRAWING	SCALE: NONE		FILENAME: DC2293	
		SHEET 2 OF 13		

NOTES: UNLESS OTHERWISE SPECIFIED

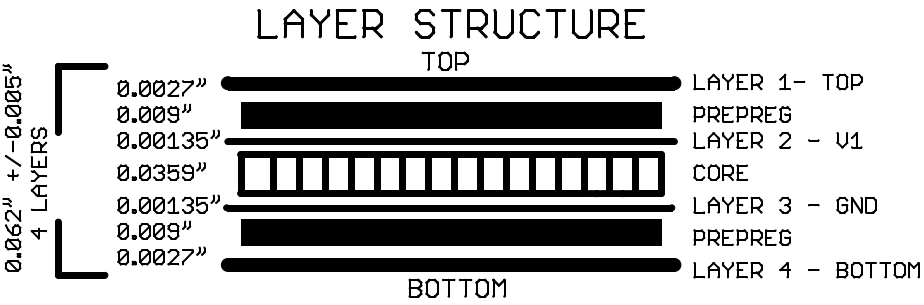
1. FAB PER IPC-A-600.
2. MATERIAL: EPOXY FIBERGLASS, NEMA GRADE FR-4
FINISHED THICKNESS TO BE 0.062" +/-0.005"
4-LAYER BOARD, 2 OZ. CU ON OUTER LAYERS,
1 OZ. CU ON INNER LAYERS,
FLAMMABILITY RATING: 94 V-2 MINIMUM.
3. SIZE: CUT TO DIMENSIONS AND TOLERANCES SHOWN.
0.00" ARE PRIMARY DATUMS.
4. FINISH: SMOBC USING LPI BOTH SIDES, COLOR BLACK.
ENIG FINISH. LEAD FREE SOLDER CAN BE USED
FOR PROTOTYPE BOARDS.
HIGH DEFINITION WHITE SILKSCREEN.

5. DRILL: PLATE THRU ALL HOLES WITH COPPER, 0.001"
THICK MIN. ALL HOLES SHALL BE DRILLED
+/-0.003" WITH RESPECT TO CTR. OF DRILLED
PAD. ALL HOLES FINISHED SIZE AFTER PLATING.
6. DROP ALL UNUSED PADS ON INNER LAYERS.
7. DO NOT ALTER ARTWORK e.g. TO ADD LOGO OR DATE CODE.
PAD SIZE CAN BE MODIFIED TO MEET END FINISH.
8. PCBs ARE TO BE RoHS COMPLIANT.
9. SCORING FOR PANELIZED PCB:



REVISION HISTORY				
ECO	REV	DESCRIPTION	APPROVED	DATE
-	1	PRODUCTION	NATHAN E.	08-30-15

DRILL TABLE					
Sym	Nº	Mils	MM	Qty	Plated
+	1	10	0.25	33	YES
x	2	19	0.47	16	YES
▣	3	22	0.56	16	YES
◇	4	24	0.60	1	YES
⊠	5	35	0.90	6	YES
⊞	6	36	0.91	12	YES
+	7	39	0.99	1	YES
+	8	40	1.02	4	YES
×	9	51	1.30	1	NOT
×	10	62	1.59	2	NOT
▽	11	68	1.72	1	NOT
△	12	96	2.44	4	YES
⊠	13	183	4.65	4	NOT



UNLESS OTHERWISE SPECIFIED
DIMENSIONS ARE IN INCHES
TOLERANCES ON ANGLE +/- 1°
0.XX" = +/- 0.01"
0.XXX" = +/- 0.005"
INTERPRET DIM AND TOL
PER ASME Y14.5M-1994

THIRD ANGLE PROJECTION

APPROVALS

	NAME	DATE
PCB DES.	R.S.	08-38-15
ENG	NATHAN E.	08-38-15

DO NOT SCALE DRAWING

1630 MCCARTHY BLVD.
MILPITAS, CA 95033
PH: (408) 432-1988
LTC CONFIDENTIAL
FOR CUSTOMER USE ONLY

LINEAR TECHNOLOGY

TITLE: FABRICATION DRAWING
PROGRAMMABLE HEX VOLTAGE
SUPERVISOR WITH EEPROM

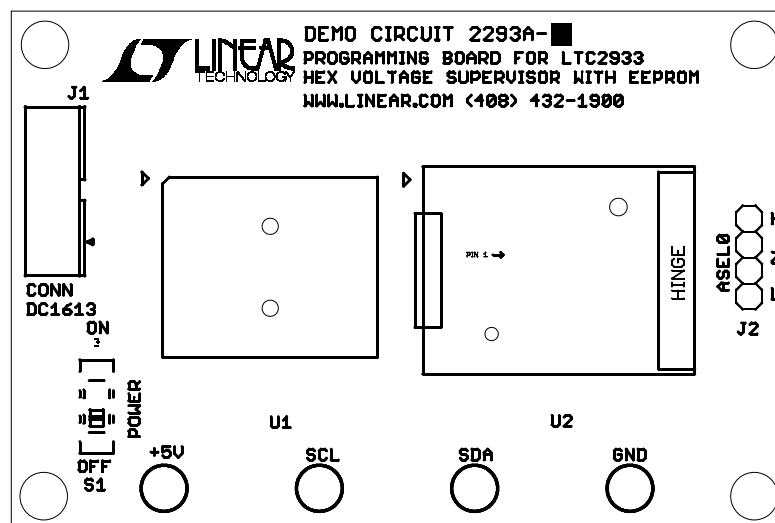
SIZE N/A	IC NO. LTC2933 DEMO CIRCUIT 2293A	REV 1
-------------	--------------------------------------	----------


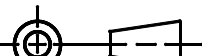
FILENAME: DC2293

SHEET 3 OF 13

REVISION HISTORY

ECO	REV	DESCRIPTION	APPROVED	DATE
-	1	PRODUCTION	NATHAN E.	08-30-15



UNLESS OTHERWISE SPECIFIED DIMENSIONS ARE IN INCHES TOLERANCES ON ANGLE +/- 1° 0.XX" = +/- 0.01" 0.XXX" = +/- 0.005" INTERPRET DIM AND TOL PER ASME Y14.5M-1994	APPROVALS			 <div>1630 MCCARTHY BLVD. MILPITAS, CA 95033 PH: (408) 432-1900 LTC CONFIDENTIAL FOR CUSTOMER USE ONLY</div>
		NAME	DATE	
	PCB DES.	R.S.	08-38-15	
	ENG	NATHAN E.	08-38-15	
THIRD ANGLE PROJECTION				TITLE: TOP SILKSCREEN PROGRAMMABLE HEX VOLTAGE SUPERVISOR WITH EEPROM
				
DO NOT SCALE DRAWING	SCALE: NONE	SIZE	IC NO.	REV
		N/A	LTC2933 DEMO CIRCUIT 2293A	1
		FILENAME: DC2293		SHEET 4 OF 13

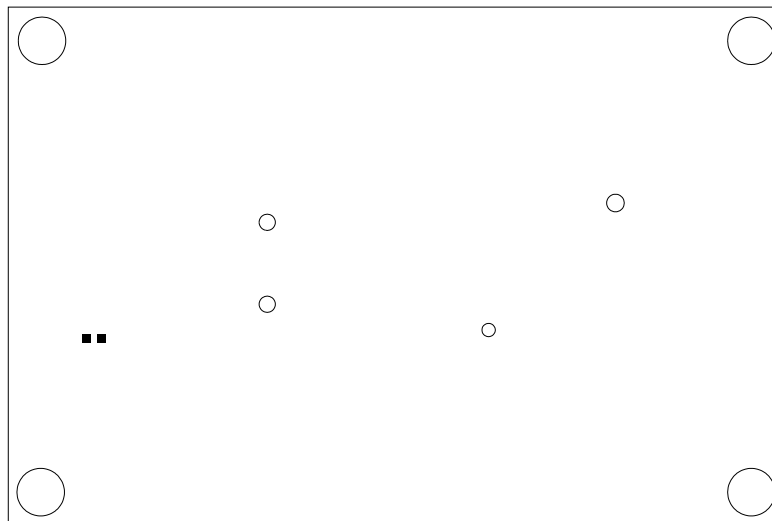



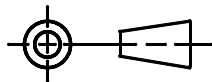
TITLE: TOP SILKSCREEN
PROGRAMMABLE HEX VOLTAGE
SUPERVISOR WITH EEPROM

SIZE N/A IC NO. LTC2933
DEMO CIRCUIT 2293A REV 1

REVISION HISTORY

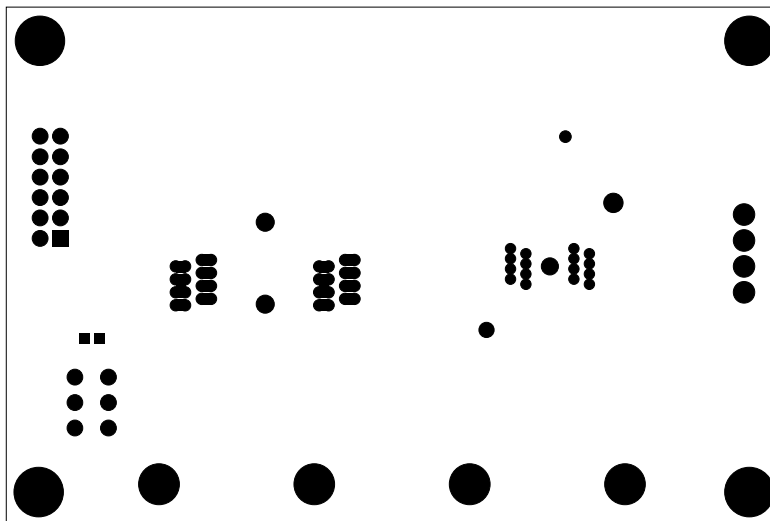
ECO	REV	DESCRIPTION	APPROVED	DATE
-	1	PRODUCTION	NATHAN E.	08-30-15


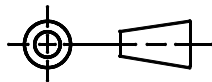


UNLESS OTHERWISE SPECIFIED DIMENSIONS ARE IN INCHES TOLERANCES ON ANGLE +/- 1° 0.XX" = +/- 0.01" 0.XXX" = +/- 0.005" INTERPRET DIM AND TOL PER ASME Y14.5M-1994	APPROVALS			 1630 MCCARTHY BLVD. MILPITAS, CA 95033 PH: (408) 432-1988 LTC CONFIDENTIAL FOR CUSTOMER USE ONLY	
		NAME	DATE		
	PCB DES.	R.S.	08-38-15		
	ENG	NATHAN E.	08-38-15		
THIRD ANGLE PROJECTION				TITLE: TOP PASTE PROGRAMMABLE HEX VOLTAGE SUPERVISOR WITH EEPROM	
					
DO NOT SCALE DRAWING	SCALE: NONE		SIZE N/A	IC NO. LTC2933 DEMO CIRCUIT 2293A	REV 1
FILENAME: DC2293			SHEET 5 OF 13		

REVISION HISTORY

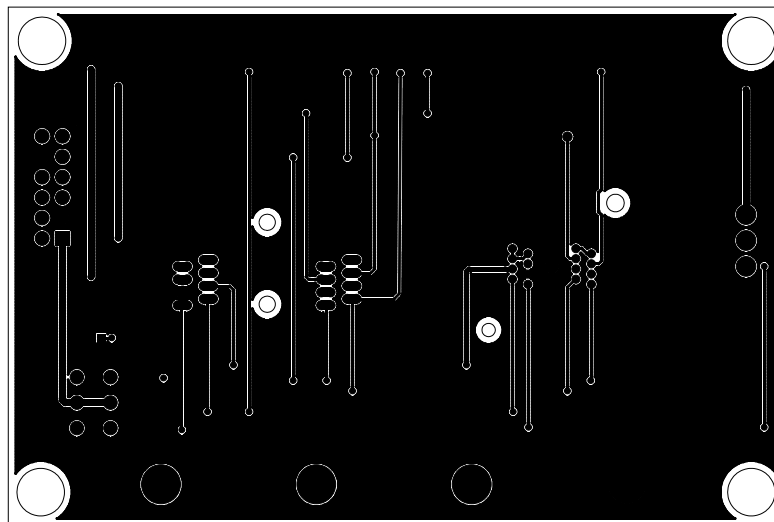
ECO	REV	DESCRIPTION	APPROVED	DATE
-	1	PRODUCTION	NATHAN E.	08-30-15



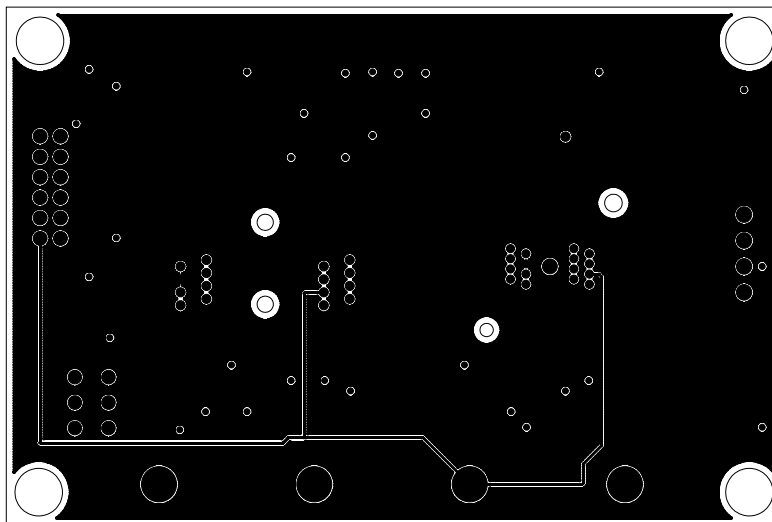
UNLESS OTHERWISE SPECIFIED DIMENSIONS ARE IN INCHES TOLERANCES ON ANGLE +/- 1° 0.XX" = +/- 0.01" 0.XXX" = +/- 0.005" INTERPRET DIM AND TOL PER ASME Y14.5M-1994	APPROVALS			 1630 MCCARTHY BLVD. MILPITAS, CA 95033 PH: (408) 432-1988 LTC CONFIDENTIAL FOR CUSTOMER USE ONLY		
		NAME	DATE			
	PCB DES.	R.S.	08-38-15	TITLE: TOP SOLDERMASK PROGRAMMABLE HEX VOLTAGE SUPERVISOR WITH EEPROM		
	ENG	NATHAN E.	08-38-15			
THIRD ANGLE PROJECTION 						
DO NOT SCALE DRAWING	SCALE: NONE	SIZE N/A	IC NO. LTC2933 DEMO CIRCUIT 2293A	REV 1	FILENAME: DC2293	SHEET 6 OF 13

REVISION HISTORY



ECO	REV	DESCRIPTION	APPROVED	DATE
-	1	PRODUCTION	NATHAN E.	08-30-15



<p>UNLESS OTHERWISE SPECIFIED DIMENSIONS ARE IN INCHES TOLERANCES ON ANGLE +/- 1° 0.XX" = +/- 0.01" 0.XXX" = +/- 0.005" INTERPRET DIM AND TOL PER ASME Y14.5M-1994</p>	<p>APPROVALS</p>			<p>LINEAR TECHNOLOGY</p> <p>1630 MCCARTHY BLVD. MILPITAS, CA 95033 PH: (408) 432-1988 LTC CONFIDENTIAL FOR CUSTOMER USE ONLY</p>		
		NAME	DATE			
		PCB DES.	R.S.	08-38-15	<p>TITLE: 1 - TOP COPPER (SIGNAL) PROGRAMMABLE HEX VOLTAGE SUPERVISOR WITH EEPROM</p>	
		ENG	NATHAN E.	08-38-15		
<p>THIRD ANGLE PROJECTION</p>			<p>SIZE N/A</p>			
<p>DO NOT SCALE DRAWING</p>			<p>SCALE: NONE</p>			
<p>FILENAME: DC2293</p>			<p>SHEET 7 OF 13</p>			

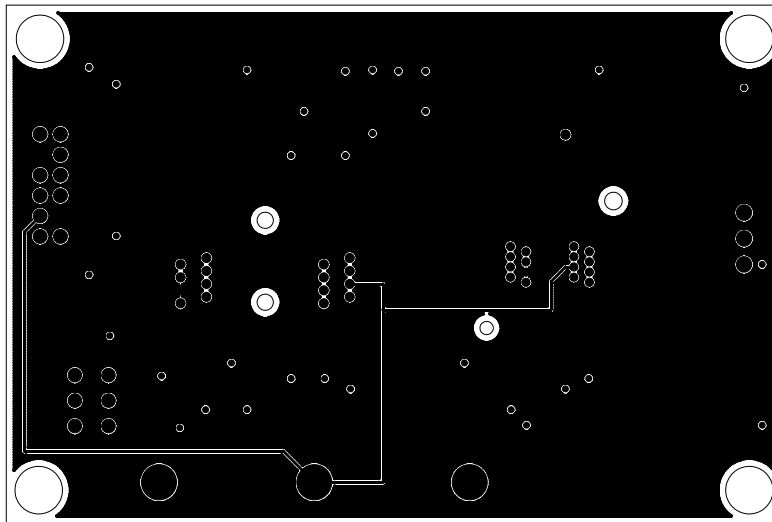


REVISION HISTORY				
ECO	REV	DESCRIPTION	APPROVED	DATE
-	1	PRODUCTION	NATHAN E.	08-30-15

UNLESS OTHERWISE SPECIFIED DIMENSIONS ARE IN INCHES TOLERANCES ON ANGLE +/- 1° 0.XX" = +/- 0.01" 0.XXX" = +/- 0.005" INTERPRET DIM AND TOL PER ASME Y14.5M-1994	APPROVALS			 <div>1638 MCCARTHY BLVD. MILPITAS, CA 95033 PH: (408) 432-1988 LTC CONFIDENTIAL FOR CUSTOMER USE ONLY</div>		
		NAME	DATE			
	PCB DES.	R.S.	08-38-15			
	ENG	NATHAN E.	08-38-15			
THIRD ANGLE PROJECTION				TITLE: 2 - INNER COPPER (U1) PROGRAMMABLE HEX VOLTAGE SUPERVISOR WITH EEPROM		
						
DO NOT SCALE DRAWING	SCALE: NONE			SIZE N/A	IC NO. LTC2933 DEMO CIRCUIT 2293A	REV 1
				FILENAME: DC2293		SHEET 8 OF 13

REVISION HISTORY

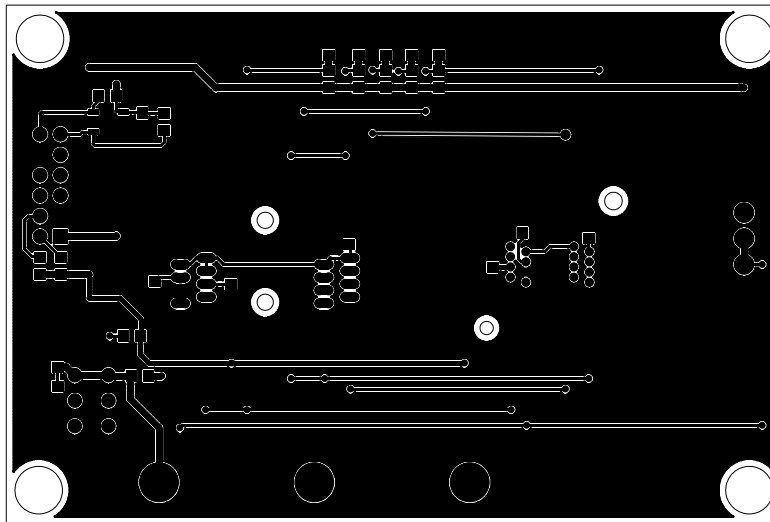
ECO	REV	DESCRIPTION	APPROVED	DATE
-	1	PRODUCTION	NATHAN E.	08-30-15


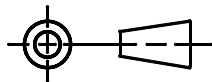


<p>UNLESS OTHERWISE SPECIFIED DIMENSIONS ARE IN INCHES TOLERANCES ON ANGLE +/- 1° 0.XX" = +/- 0.01" 0.XXX" = +/- 0.005" INTERPRET DIM AND TOL PER ASME Y14.5M-1994</p>	<p>APPROVALS</p>			<p>LINEAR TECHNOLOGY</p> <p>1630 MCCARTHY BLVD. MILPITAS, CA 95033 PH: (408) 432-1988 LTC CONFIDENTIAL FOR CUSTOMER USE ONLY</p>		
		NAME	DATE			
	THIRD ANGLE PROJECTION	PCB DES.	R.S.	08-38-15	<p>TITLE: 3 - INNER COPPER (GND) PROGRAMMABLE HEX VOLTAGE SUPERVISOR WITH EEPROM</p>	
		ENG	NATHAN E.	08-38-15		
					<p>SIZE N/A</p>	<p>IC NO. LTC2933 DEMO CIRCUIT 2293A</p>
DO NOT SCALE DRAWING	SCALE: NONE			FILENAME: DC2293		SHEET 9 OF 13

REVISION HISTORY

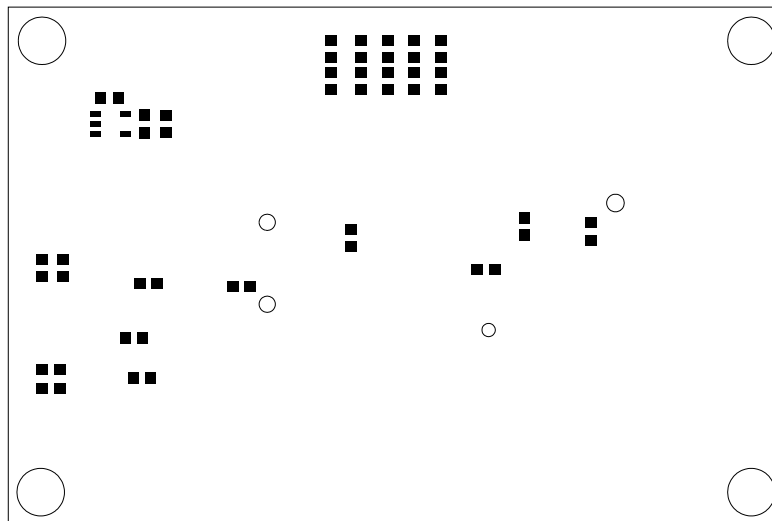
ECO	REV	DESCRIPTION	APPROVED	DATE
-	1	PRODUCTION	NATHAN E.	08-30-15


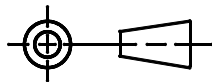


UNLESS OTHERWISE SPECIFIED DIMENSIONS ARE IN INCHES TOLERANCES ON ANGLE +/- 1° 0.XX" = +/- 0.01" 0.XXX" = +/- 0.005" INTERPRET DIM AND TOL PER ASME Y14.5M-1994	APPROVALS			 1630 MCCARTHY BLVD. MILPITAS, CA 95033 PH: (408) 432-1988 LTC CONFIDENTIAL FOR CUSTOMER USE ONLY
	PCB DES. ENG	NAME NATHAN E.	DATE 08-30-15	
THIRD ANGLE PROJECTION 	SIZE N/A	IC NO. LTC2933 DEMO CIRCUIT 2293A	REV 1	
DO NOT SCALE DRAWING	SCALE: NONE		FILENAME: DC2293	SHEET 10 OF 13

REVISION HISTORY

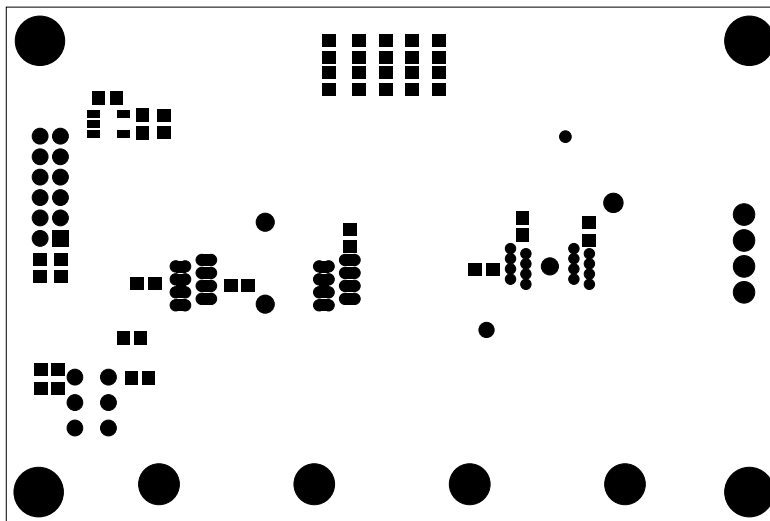
ECO	REV	DESCRIPTION	APPROVED	DATE
-	1	PRODUCTION	NATHAN E.	08-30-15


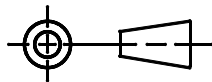


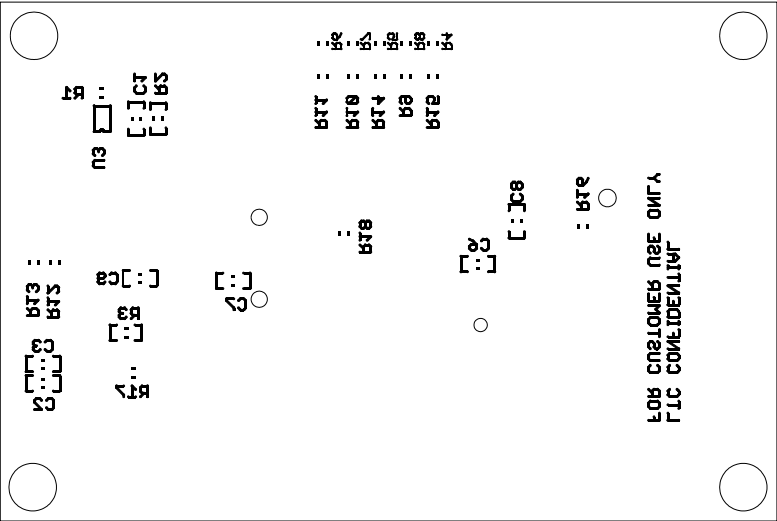
UNLESS OTHERWISE SPECIFIED DIMENSIONS ARE IN INCHES TOLERANCES ON ANGLE +/- 1° 0.XX" = +/- 0.01" 0.XXX" = +/- 0.005" INTERPRET DIM AND TOL PER ASME Y14.5M-1994	APPROVALS			 1630 MCCARTHY BLVD. MILPITAS, CA 95033 PH: (408) 432-1988 LTC CONFIDENTIAL FOR CUSTOMER USE ONLY		
		NAME	DATE			
	PCB DES.	R.S.	08-38-15	TITLE: BOTTOM PASTE PROGRAMMABLE HEX VOLTAGE SUPERVISOR WITH EEPROM		
	ENG	NATHAN E.	08-38-15			
THIRD ANGLE PROJECTION						
				SIZE N/A	IC NO. LTC2933 DEMO CIRCUIT 2293A	REV 1
DO NOT SCALE DRAWING	SCALE: NONE			FILENAME: DC2293		SHEET 11 OF 13

REVISION HISTORY

ECO	REV	DESCRIPTION	APPROVED	DATE
-	1	PRODUCTION	NATHAN E.	08-30-15



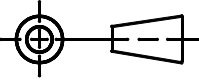
UNLESS OTHERWISE SPECIFIED DIMENSIONS ARE IN INCHES TOLERANCES ON ANGLE +/- 1° 0.XX" = +/- 0.01" 0.XXX" = +/- 0.005" INTERPRET DIM AND TOL PER ASME Y14.5M-1994	APPROVALS			 1630 MCCARTHY BLVD. MILPITAS, CA 95033 PH: (408) 432-1988 LTC CONFIDENTIAL FOR CUSTOMER USE ONLY	
	PCB DES.	R.S.	08-38-15		
THIRD ANGLE PROJECTION	ENG	NATHAN E.	08-38-15	TITLE: BOTTOM SOLDERMASK PROGRAMMABLE HEX VOLTAGE SUPERVISOR WITH EEPROM	
				SIZE N/A	IC NO. LTC2933 DEMO CIRCUIT 2293A
				REV 1	
DO NOT SCALE DRAWING	SCALE: NONE			FILENAME: DC2293	
SHEET 12 OF 13					



REVISION HISTORY				
ECO	REV	DESCRIPTION	APPROVED	DATE
-	1	PRODUCTION	NATHAN E.	08-30-15


UNLESS OTHERWISE SPECIFIED
DIMENSIONS ARE IN INCHES
TOLERANCES ON ANGLE +/- 1°
0.XX" = +/- 0.01"
0.XXX" = +/- 0.005"
INTERPRET DIM AND TOL
PER ASME Y14.5M-1994

THIRD ANGLE PROJECTION



APPROVALS

	NAME	DATE
PCB DES.	R.S.	08-30-15
ENG	NATHAN E.	08-30-15



1630 MCCARTHY BLVD.
MILPITAS, CA 95033
PH: (408) 432-1900
LTC CONFIDENTIAL
FOR CUSTOMER USE ONLY

**TITLE: BOTTOM SILKSCREEN
PROGRAMMABLE HEX VOLTAGE
SUPERVISOR WITH EEPROM**

SIZE N/A	IC NO. LTC2933 DEMO CIRCUIT 2293A	REV 1
-------------	---	-----------------

DO NOT SCALE DRAWING

SCALE: NONE

FILENAME: DC2293

SHEET 13 OF 13