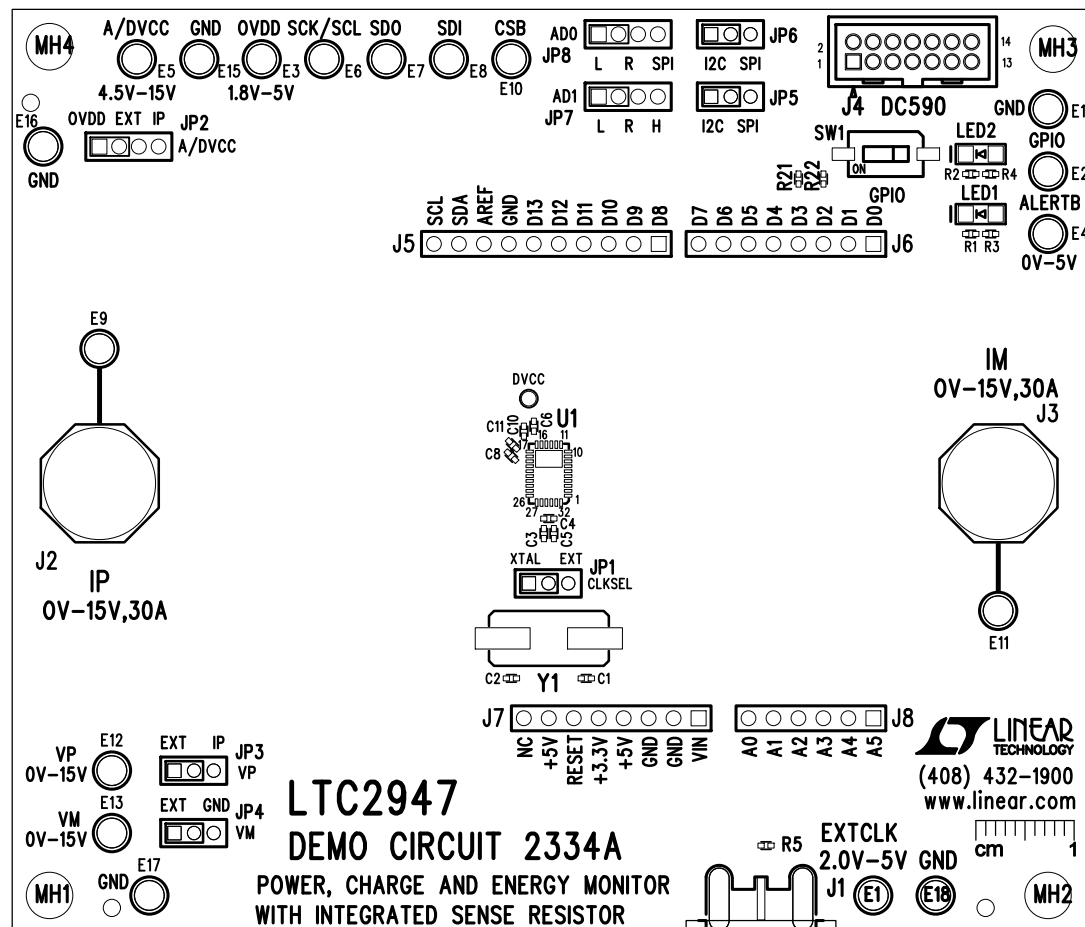
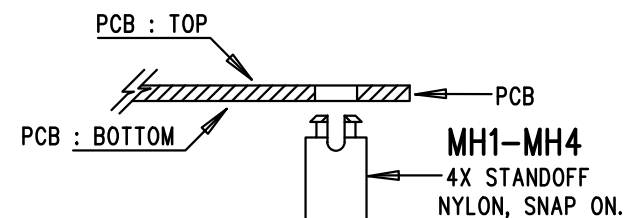


REVISION HISTORY				
ECO	REV	DESCRIPTION	APP. ENG.	DATE
-	2	PRODUCTION	PATRICK W.	06-08-15

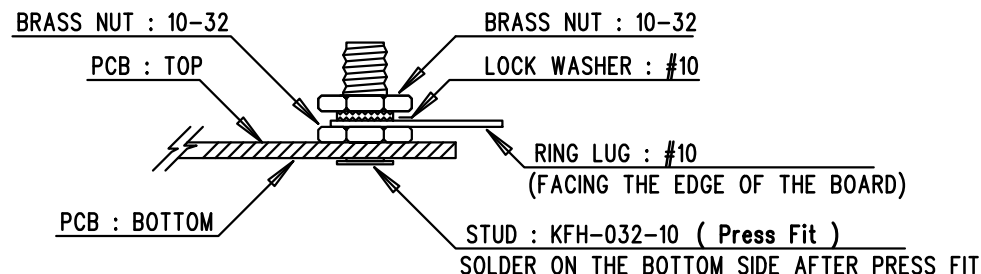



NOTES: UNLESS OTHERWISE SPECIFIED

1. WORKMANSHIP SHALL BE IN ACCORDANCE WITH IPC-A-610.
2. ASSEMBLY PROCESS SHALL INCLUDE: REFLOW SOLDER TOP SIDE SMD. MAXIMUM SOLDER TEMPERATURE IS 240 DEGREES CELSIUS.
3. PARTS TO OMIT WILL BE SPECIFIED ON THE BILL OF MATERIALS. LOCATIONS OF OMITTED PARTS SHALL BE FREE OF SOLDER. MASK THE SOLDER STENCIL WHERE SMT PARTS ARE OMITTED.
4. INSTALL SHUNTS AS SHOWN.
5. DEPANELIZE BOARDS AFTER ASSEMBLY AND ROUTE-OUT THE BREAKOUT TABS ON FOUR SIDES OF THE BOARD EDGE.
6. DO NOT APPLY ANY KIND OF ASSEMBLY STAMP OR QA STAMP TO ANY BOARD.
7. INSTALL 4 STANDOFFS AS SHOWN BELOW:



8. INSTALL J2 AND J3 AS SHOWN BELOW:



APPROVALS			
PCB DES.	KIM T.		
APP ENG.	PATRICK W.	TITLE: TOP ASSEMBLY DRAWING POWER, CHARGE AND ENERGY MONITOR WITH INTEGRATED SENSE RESISTOR	
		SIZE N/A	IC NO. LTC2947IUF DEMO CIRCUIT 2334A
		REV. 2	
SCALE = NONE		FILENAME: DC2334A-2.PCB	SHT 1 OF 2

1630 MCCARTHY BLVD
MILPITAS, CA 95035
PH: (408)432-1900
www.linear.com
LTC CONFIDENTIAL-
FOR CUSTOMER USE ONLY