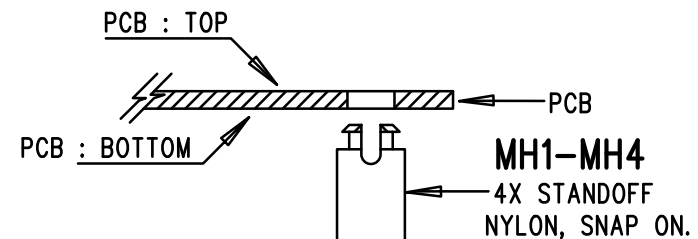


REVISION HISTORY

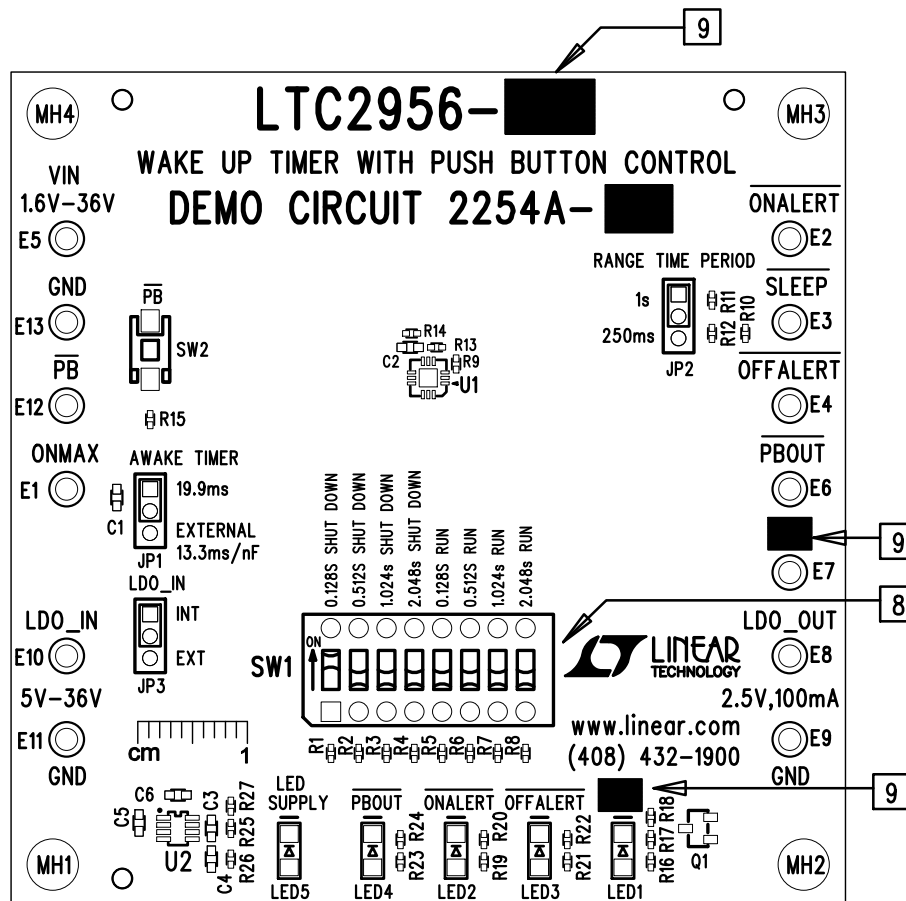
ECO	REV	DESCRIPTION	APP. ENG.	DATE
-	1	PRODUCTION	SAL H.	08-11-14

NOTES: UNLESS OTHERWISE SPECIFIED

1. WORKMANSHIP SHALL BE IN ACCORDANCE WITH IPC-A-610.
2. ASSEMBLY PROCESS SHALL INCLUDE: REFLOW SOLDER TOP SIDE SMD. MAXIMUM SOLDER TEMPERATURE IS 240 DEGREES CELSIUS.
3. PARTS TO OMIT WILL BE SPECIFIED ON THE BILL OF MATERIALS. LOCATIONS OF OMITTED PARTS SHALL BE FREE OF SOLDER. MASK THE SOLDER STENCIL WHERE SMT PARTS ARE OMITTED.
4. INSTALL SHUNT AS SHOWN.
5. DEPANELIZE BOARDS AFTER ASSEMBLY AND ROUTE-OUT THE BREAKOUT TABS ON FOUR SIDES OF THE BOARD EDGE.
6. DO NOT APPLY ANY KIND OF ASSEMBLY STAMP OR QA STAMP TO ANY BOARD.
7. INSTALL 4 STANDOFFS AS SHOWN BELOW:



8. ON SW1 : "0.128S SHUT DOWN" IS AT "ON" POSITION. OTHERS ARE OFF.



9. MARK EACH ASSEMBLY TYPE, SUFFIX, NAME FOR E7 AND LED1 IN THE WHITE BLOCK AREAS WITH BLACK PERMANENT MARKER AS SHOWN IN TABLE BELOW:

ASSY	U1	SUFFIX	E7,LED1
A	LTC2956-1	1	EN
B	LTC2956-2	2	EN

APPROVALS

PCB DES.	KIM T.
APP ENG.	SAL H.
SCALE = NONE	



1630 MCCARTHY BLVD
MILPITAS, CA 95035
PH: (408)432-1900
www.linear.com
LTC CONFIDENTIAL-
FOR CUSTOMER USE ONLY

TITLE: TOP ASSEMBLY DRAWING

WAKE UP TIMER WITH PUSH BUTTON CONTROL

SIZE N/A IC NO. LTC2956IUD-1/2
DEMO CIRCUIT 2254A REV. 1

FILENAME: DC2254A-1.PCB

SHT 1 OF 1