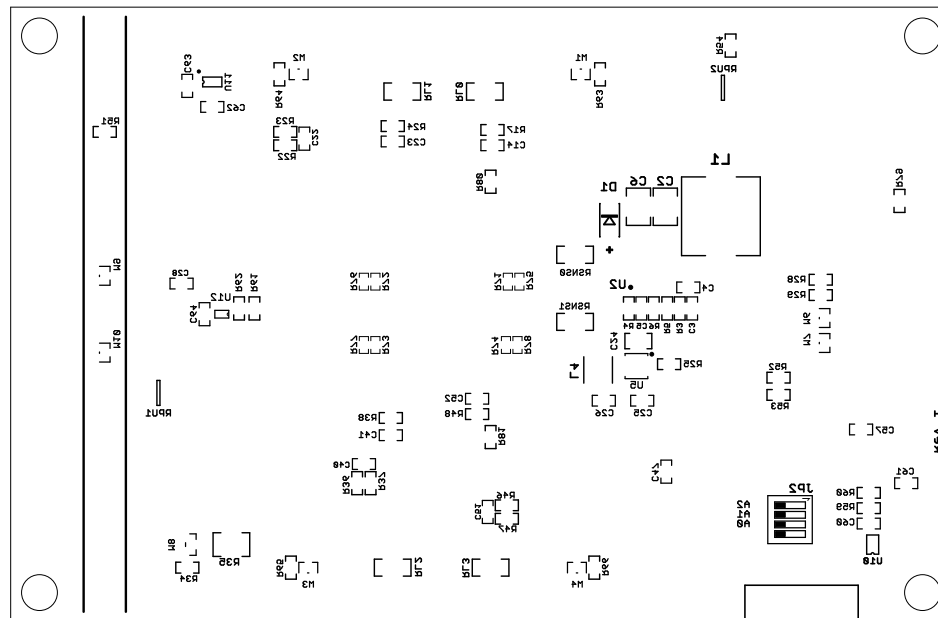

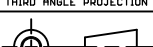


REVISION HISTORY				
ECO	REV	DESCRIPTION	APPROVED	DATE
-	1	PRODUCTION	MIKE P.	09/05/2019

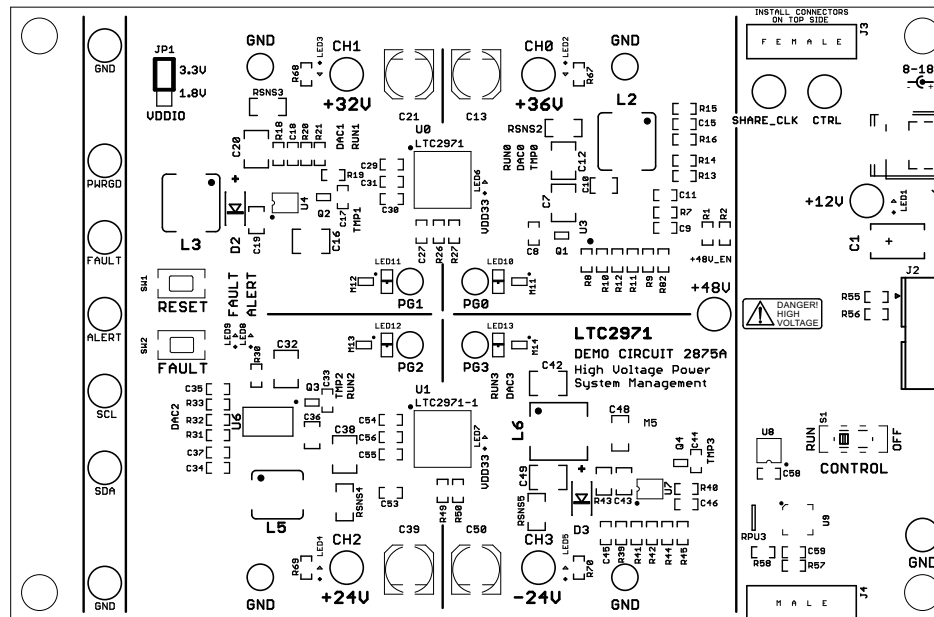
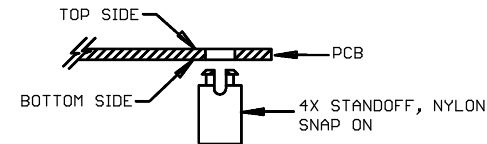


UNLESS OTHERWISE SPECIFIED DIMENSIONS ARE IN INCHES TOLERANCES ON ANGLE +/- .1° 0.XXX° = +/- 0.001° 0.XXX° = +/- 0.005° INTERPRET DIM AND TOL PER ASME Y14.5M-1994	APPROVALS		 <div>1630 MCCARTHY BLVD. MILPITAS, CA 95033 PH: (408) 432-1900 LTC CONFIDENTIAL FOR CUSTOMER USE ONLY</div>	
	NAME	DATE		
	PCB DES. MIKE P.	9-5-19		
	ENG MIKE P.	9-5-19		
THIRD ANGLE PROJECTION 			TITLE: BOTTOM ASSEMBLY DRAWING LTC2971 2-CHANNEL HV POWER SYSTEM MANAGER	
DO NOT SCALE DRAWING	SCALE: NONE	SIZE	IC NO. LTC2971 DEMO CIRCUIT 2875A	REV 1
		FILENAME: DC2875A_Rev1		SHEET 2 OF 13

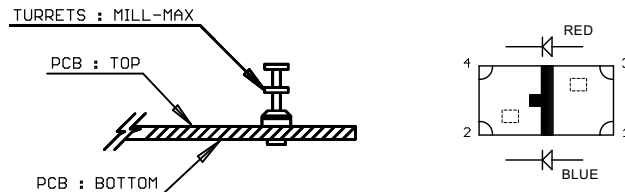
NOTES: UNLESS OTHERWISE SPECIFIED

1. WORKMANSHIP SHALL BE IN ACCORDANCE WITH IPC-A-610.
2. PARTS TO OMIT WILL BE SPECIFIED ON THE BILL OF MATERIALS. MASK THE SOLDER STENCIL WHERE SMT PARTS ARE OMITTED.
3. DEPANELIZE BOARDS AFTER ASSEMBLY AND ROUTE-OUT THE BREAKOUT TABS ON 4 SIDES OF THE BOARD EDGE.
4. ASSY PROCESS SHALL INCLUDE: REFLOW SOLDER TOP SIDE SMD.
5. DO NOT APPLY ANY KIND OF ASSEMBLY STAMP OR QA STAMP ON ANY BOARD.

6. INSTALL 4 STANDOFFS AT 4 CORNERS FROM THE BOTTOM SIDE.




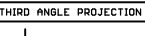
7. INSTALL TURRETS and LEDs AS SHOWN BELOW:



8. INSTALL SHUNT AS SHOWN WITH THIS SYMBOL



REVISION HISTORY				
ECO	REV	DESCRIPTION	APPROVED	DATE
-	1	PRODUCTION	MIKE P.	09/05/2019

UNLESS OTHERWISE SPECIFIED DIMENSIONS ARE IN INCHES TOLERANCES ON ANGLE +/- 1° 0.XXX" = +/- 0.01" 0.XXX" = +/- 0.005" INTERPRET DIM AND TOL PER ASME Y14.5M-1994	APPROVALS		 <div>1630 MCCARTHY BLVD. MILPITAS, CA 95033 PH: (408) 432-1900 LTC CONFIDENTIAL FOR CUSTOMER USE ONLY</div>		
	NAME	DATE			
	PCB DES. MIKE P.	9-5-19			
	ENG. MIKE P.	9-5-19			
THIRD ANGLE PROJECTION 			TITLE: TOP ASSEMBLY DRAWING LTC2971 2-CHANNEL HV POWER SYSTEM MANAGER		
DO NOT SCALE DRAWING	SCALE: NONE		SIZE N/A	IC NO. LTC2971 DEMO CIRCUIT 2875A	REV 1
			FILENAME: DC2875A_Rev1		SHEET 1 OF 13