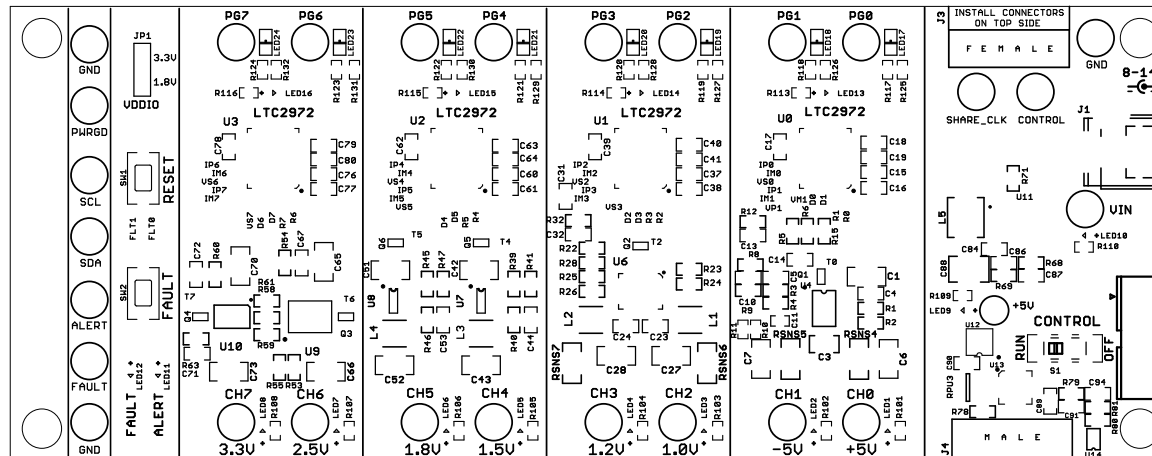
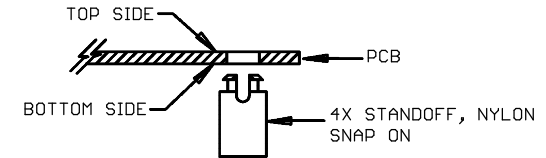


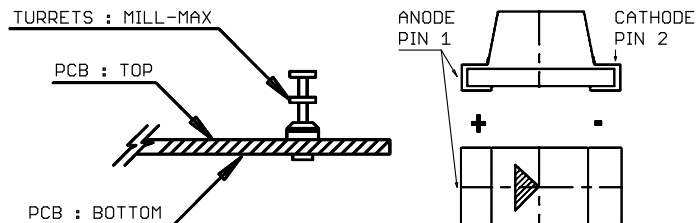
## NOTES: UNLESS OTHERWISE SPECIFIED


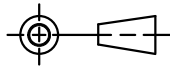
1. WORKMANSHIP SHALL BE IN ACCORDANCE WITH IPC-A-610.
2. PARTS TO OMIT WILL BE SPECIFIED ON THE BILL OF MATERIALS. MASK THE SOLDER STENCIL WHERE SMT PARTS ARE OMITTED.
3. DEPANELIZE BOARDS AFTER ASSEMBLY AND ROUTE-OUT THE BREAKOUT TABS ON 4 SIDES OF THE BOARD EDGE.
4. ASSY PROCESS SHALL INCLUDE: REFLOW SOLDER TOP SIDE SMD.
5. DO NOT APPLY ANY KIND OF ASSEMBLY STAMP OR QA STAMP ON ANY BOARD.

6. INSTALL 4 STANDOFFS AT 4 CORNERS FROM THE BOTTOM SIDE.



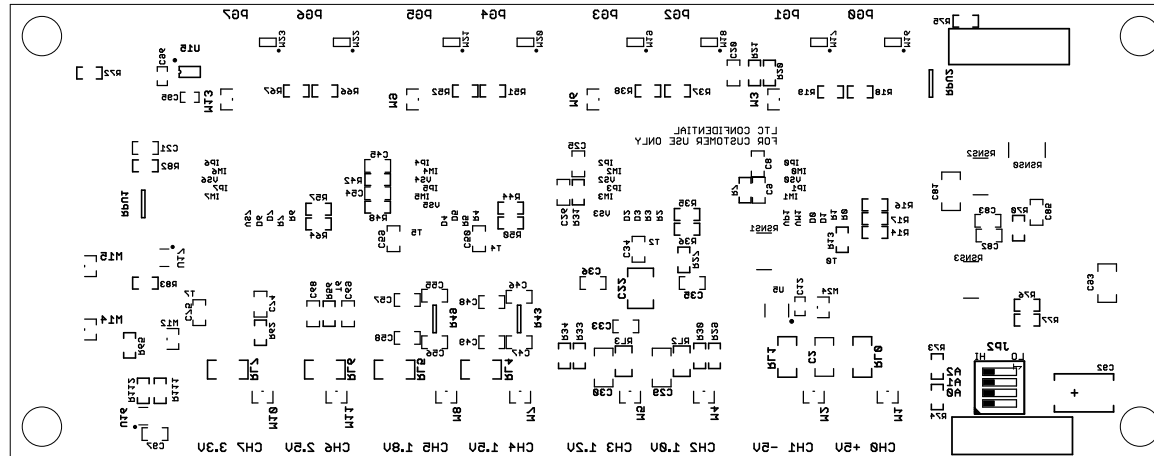
7. INSTALL TURRETS and LEDS AS SHOWN BELOW:


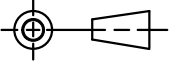


UNLESS OTHERWISE SPECIFIED DIMENSIONS ARE IN INCHES TOLERANCES ON ANGLE +/- 1° 0.XX" = +/- 0.01" 0.XXX" = +/- 0.005" INTERPRET DIM AND TOL PER ASME Y14.5M-1994	APPROVALS			 1630 MCCARTHY BLVD. MILPITAS, CA 95033 PH: (408) 432-1900 LTC CONFIDENTIAL FOR CUSTOMER USE ONLY
	NAME	DATE		
	PCB DES. MIKE P.	02-08-18		
	ENG MIKE P.	02-08-18		
THIRD ANGLE PROJECTION 				<b>TITLE: TOP ASSEMBLY DRAWING</b> <b>LTC2972UJF 2-CHANNEL</b> <b>POWER SYSTEM MANAGER</b>
DO NOT SCALE DRAWING	SCALE: NONE	FILENAME: DC2619A_Rev1	SHEET 1 OF 13	SIZE N/A IC NO. LTC2972 DEMO CIRCUIT 2619A REV 1

# REVISION HISTORY

ECO	REV	DESCRIPTION	APPROVED	DATE
-	1	PRODUCTION	MIKE P.	02/08/2018

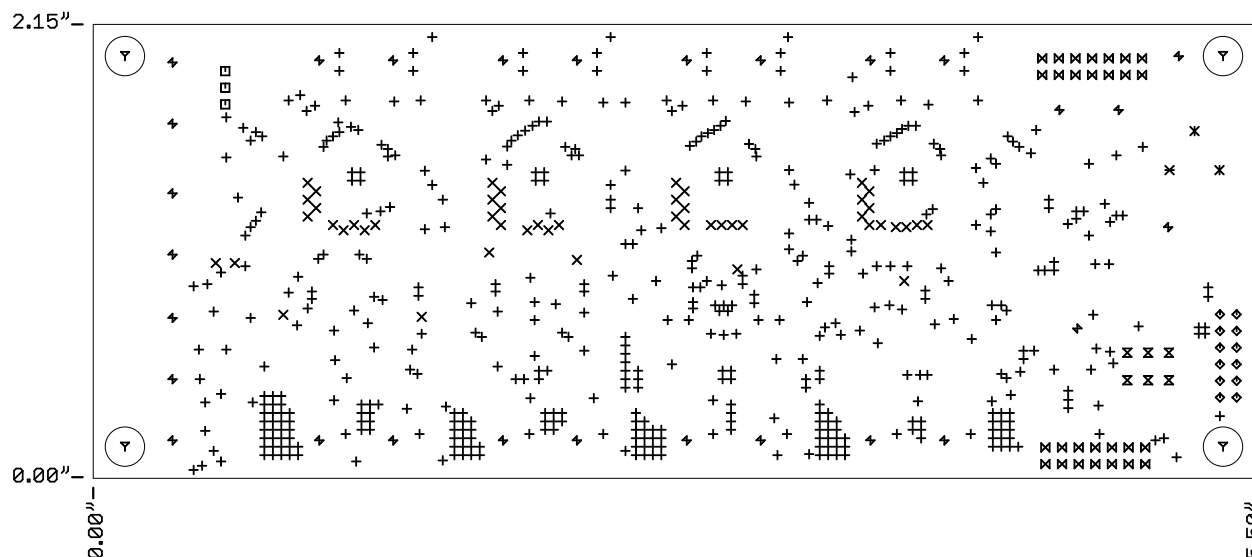


UNLESS OTHERWISE SPECIFIED DIMENSIONS ARE IN INCHES TOLERANCES ON ANGLE +/- 1° 0.XX" = +/- 0.01" 0.XXX" = +/- 0.005" INTERPRET DIM AND TOL PER ASME Y14.5M-1994		APPROVALS		 1630 MCCARTHY BLVD. MILPITAS, CA 95033 PH: (408) 432-1900 LTC CONFIDENTIAL FOR CUSTOMER USE ONLY
		NAME	DATE	
PCB DES.	MIKE P.	02-08-18		TITLE: BOTTOM ASSEMBLY DRAWING LTC2972UJF 2-CHANNEL POWER SYSTEM MANAGER
ENG	MIKE P.	02-08-18		
THIRD ANGLE PROJECTION				SIZE N/A
				
DO NOT SCALE DRAWING		SCALE: NONE		IC NO. LTC2972 DEMO CIRCUIT 2619A
		FILENAME: DC2619A_Rev1		REV 1 SHEET 2 OF 13

## NOTES: UNLESS OTHERWISE SPECIFIED

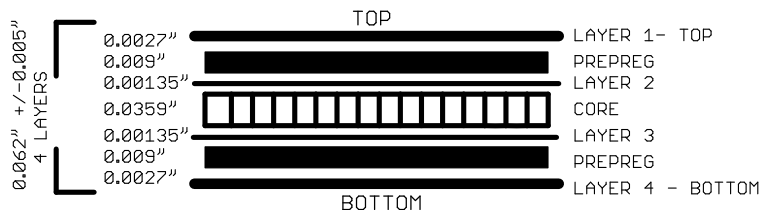
1. FAB PER IPC-A-600.
2. MATERIAL: EPOXY FIBERGLASS, NEMA GRADE FR-4  
FINISHED THICKNESS TO BE 0.062" +/-0.005"  
4-LAYER BOARD, 2 OZ. CU ON OUTER LAYERS,  
1 OZ. CU ON INNER LAYERS,  
FLAMMABILITY RATING: 94 V-2 MINIMUM.
3. SIZE: CUT TO DIMENSIONS AND TOLERANCES SHOWN.  
0.00" ARE PRIMARY DATUMS.
4. FINISH: SMOBC USING LPI BOTH SIDES, COLOR BLACK.  
ENIG FINISH. LEAD FREE SOLDER CAN BE USED  
FOR PROTOTYPE BOARDS.  
HIGH DEFINITION WHITE SILKSCREEN.

5. DRILL: PLATE THRU ALL HOLES WITH COPPER, 0.001"  
THICK MIN. ALL HOLES SHALL BE DRILLED  
+/-0.003" WITH RESPECT TO CTR. OF DRILLED  
PAD. ALL HOLES FINISHED SIZE AFTER PLATING.
6. DROP ALL UNUSED PADS ON INNER LAYERS.
7. DO NOT ALTER ARTWORK e.g. TO ADD LOGO OR DATE CODE.  
PAD SIZE CAN BE MODIFIED TO MEET END FINISH.
8. PCBs ARE TO BE RoHS COMPLIANT.
9. SCORING FOR PANELIZED PCB:



DRILL TABLE					
Sym	Nº	Mils	MM	Qty	Plated
+	1	10	0.25	517	YES
x	2	15	0.38	49	YES
□	3	31	0.80	3	YES
◇	4	34	0.86	12	YES
×	5	35	0.90	6	YES
⊞	6	36	0.91	28	YES
+	7	64	1.63	1	YES
+	8	94	2.39	27	YES
x	9	106	2.70	2	YES
x	10	126	3.20	1	YES
▽	11	187	4.75	4	NOT

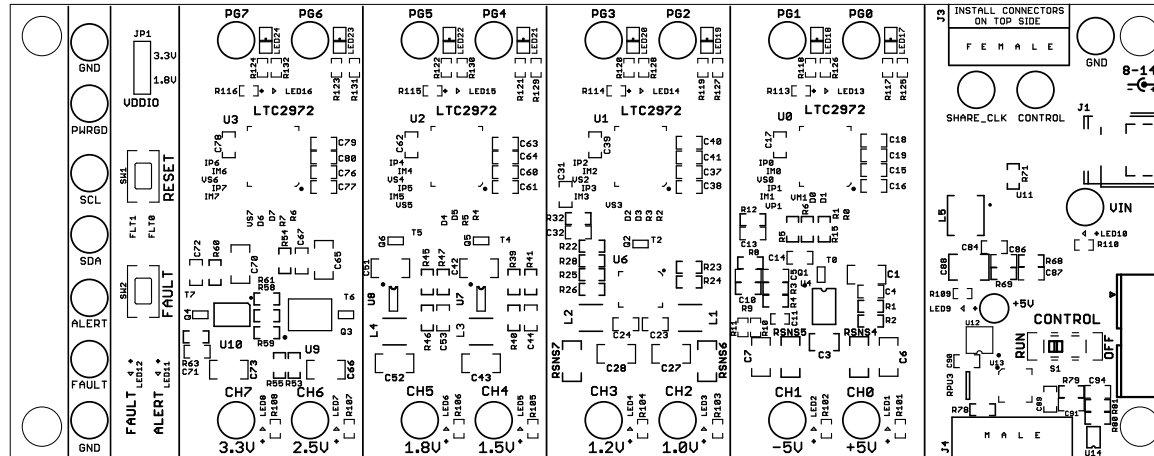
## LAYER STRUCTURE



UNLESS OTHERWISE SPECIFIED DIMENSIONS ARE IN INCHES TOLERANCES ON ANGLE +/- 1° 0.XX" = +/- 0.01" 0.XXX" = +/- 0.005" INTERPRET DIM AND TOL PER ASME Y14.5M-1994		APPROVALS			1630 MCCARTHY BLVD. MILPITAS, CA 95033 PH: (408) 432-1900 LTC CONFIDENTIAL FOR CUSTOMER USE ONLY	
		PCB DES.	NAME		DATE	TITLE: FABRICATION DRAWING LTC2972UJF 2-CHANNEL POWER SYSTEM MANAGER
THIRD ANGLE PROJECTION		ENG	MIKE P.	02-08-18	SIZE	IC NO.
					N/A	LTC2972
						DEMO CIRCUIT 2619A
DO NOT SCALE DRAWING		SCALE: NONE		FILENAME: DC2619A_Rev1		REV 1
				SHEET 3 OF 13		

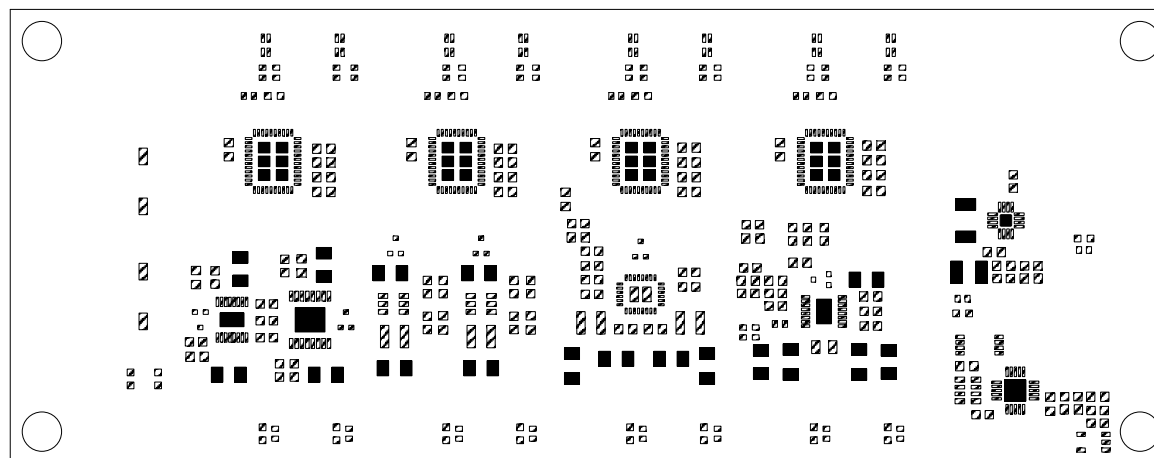
# REVISION HISTORY


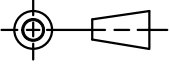
ECO	REV	DESCRIPTION	APPROVED	DATE
-	1	PRODUCTION	MIKE P.	02/08/2018



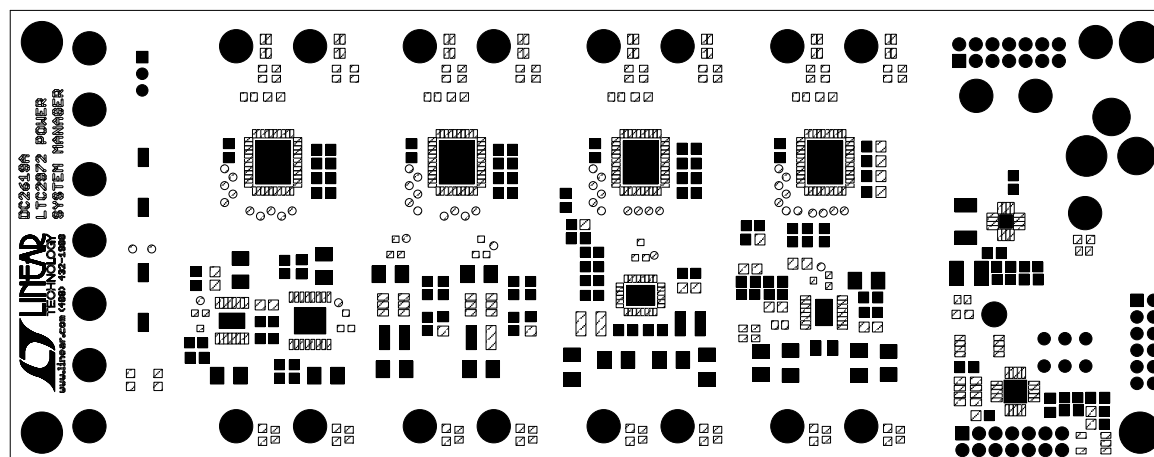
UNLESS OTHERWISE SPECIFIED DIMENSIONS ARE IN INCHES TOLERANCES ON ANGLE $\pm 1^\circ$ 0.XX" = $\pm 0.01$ " 0.XXX" = $\pm 0.005$ " INTERPRET DIM AND TOL PER ASME Y14.5M-1994		<b>APPROVALS</b>		1630 MCCARTHY BLVD. MILPITAS, CA 95033 PH: (408) 432-1900 LTC CONFIDENTIAL FOR CUSTOMER USE ONLY	
		NAME	DATE		
THIRD ANGLE PROJECTION		PCB DES.	MIKE P.	02-08-18	<b>TITLE: TOP SILKSCREEN  LTC2972UJF 2-CHANNEL  POWER SYSTEM MANAGER</b>
		ENG	MIKE P.	02-08-18	
DO NOT SCALE DRAWING		SCALE: NONE		SIZE N/A	IC NO. LTC2972 DEMO CIRCUIT 2619A
		FILENAME: DC2619A_Rev1		REV 1	SHEET 4 OF 13


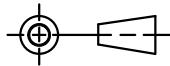
REVISION HISTORY				
ECO	REV	DESCRIPTION	APPROVED	DATE
-	1	PRODUCTION	MIKE P.	02/08/2018



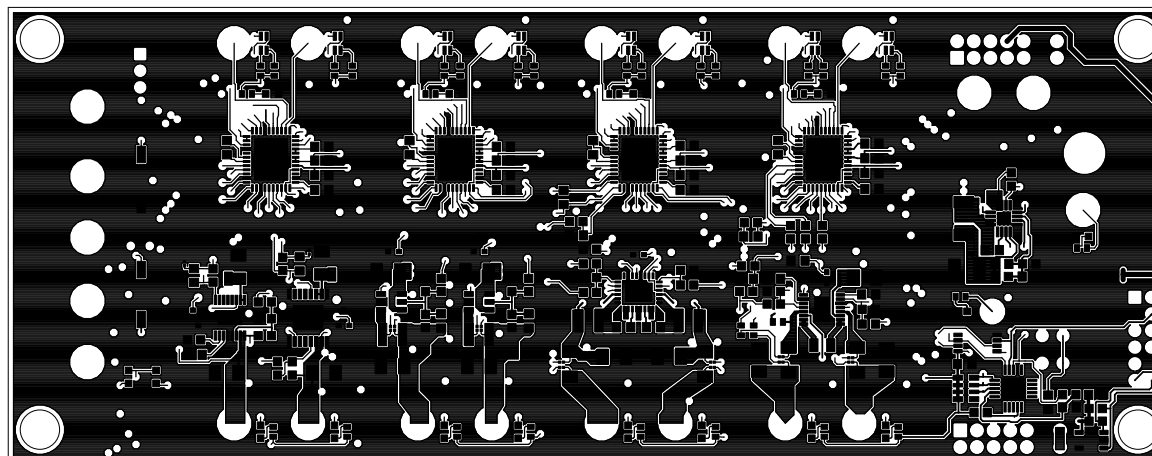
UNLESS OTHERWISE SPECIFIED DIMENSIONS ARE IN INCHES TOLERANCES ON ANGLE $\pm 1^\circ$ $0.xx'' = \pm 0.01''$ $0.xxx'' = \pm 0.005''$ INTERPRET DIM AND TOL PER ASME Y14.5M-1994		APPROVALS		 1630 MCCARTHY BLVD. MILPITAS, CA 95033 PH: (408) 432-1900 LTC CONFIDENTIAL FOR CUSTOMER USE ONLY		
		NAME	DATE			
		PCB DES. MIKE P.	02-08-18			
		ENG MIKE P.	02-08-18			
THIRD ANGLE PROJECTION				TITLE: TOP PASTE LTC2972UJF 2-CHANNEL POWER SYSTEM MANAGER		
						
DO NOT SCALE DRAWING		SCALE: NONE		SIZE N/A	IC NO. LTC2972 DEMO CIRCUIT 2619A	REV 1
FILENAME: DC2619A_Rev1				SHEET 5 OF 13		


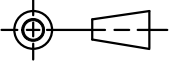
REVISION HISTORY				
ECO	REV	DESCRIPTION	APPROVED	DATE
-	1	PRODUCTION	MIKE P.	02/08/2018



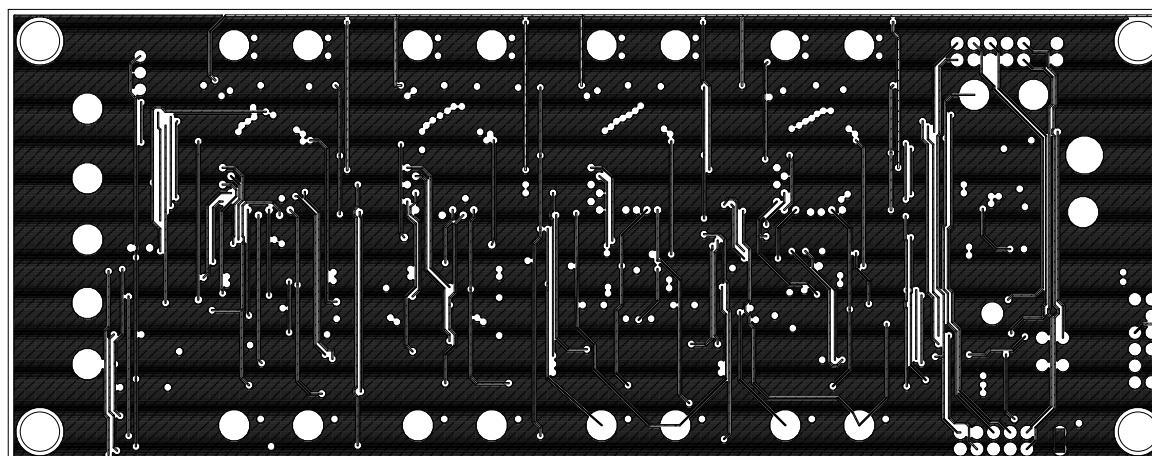
UNLESS OTHERWISE SPECIFIED DIMENSIONS ARE IN INCHES TOLERANCES ON ANGLE $\pm 1^\circ$ $0.XX'' = \pm 0.01''$ $0.XXX'' = \pm 0.005''$ INTERPRET DIM AND TOL PER ASME Y14.5M-1994		APPROVALS		 1630 MCCARTHY BLVD. MILPITAS, CA 95033 PH: (408) 432-1900 LTC CONFIDENTIAL FOR CUSTOMER USE ONLY		
		NAME	DATE			
		PCB DES. MIKE P.	02-08-18			
		ENG MIKE P.	02-08-18			
THIRD ANGLE PROJECTION				TITLE: TOP SOLDERMASK LTC2972UJF 2-CHANNEL POWER SYSTEM MANAGER		
						
DO NOT SCALE DRAWING		SCALE: NONE		SIZE N/A	IC NO. LTC2972 DEMO CIRCUIT 2619A	REV 1
FILENAME: DC2619A_Rev1				SHEET 6 OF 13		


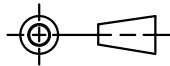
REVISION HISTORY				
ECO	REV	DESCRIPTION	APPROVED	DATE
-	1	PRODUCTION	MIKE P.	02/08/2018



UNLESS OTHERWISE SPECIFIED DIMENSIONS ARE IN INCHES TOLERANCES ON ANGLE +/- 1° 0.XX" = +/- 0.01" 0.XXX" = +/- 0.005" INTERPRET DIM AND TOL PER ASME Y14.5M-1994		APPROVALS		 1630 MCCARTHY BLVD. MILPITAS, CA 95033 PH: (408) 432-1900 LTC CONFIDENTIAL FOR CUSTOMER USE ONLY		
		PCB DES.	MIKE P.	02-08-18		
		ENG	MIKE P.	02-08-18		
THIRD ANGLE PROJECTION					TITLE: 1 - TOP COPPER LTC2972UJF 2-CHANNEL POWER SYSTEM MANAGER	
						
DO NOT SCALE DRAWING		SCALE: NONE		FILENAME: DC2619A_Rev1		SHEET 7 OF 13

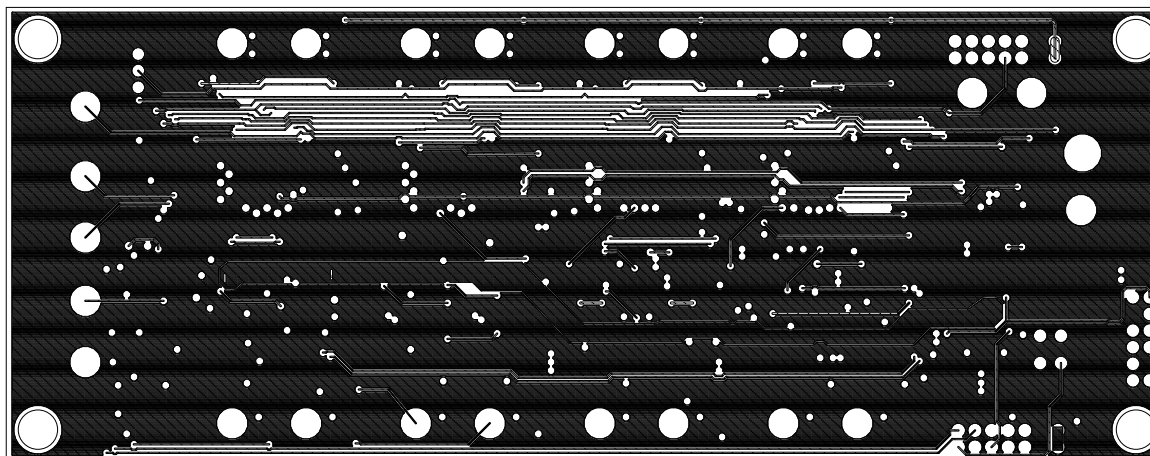
REVISION HISTORY				
ECO	REV	DESCRIPTION	APPROVED	DATE
-	1	PRODUCTION	MIKE P.	02/08/2018


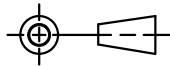


UNLESS OTHERWISE SPECIFIED DIMENSIONS ARE IN INCHES TOLERANCES ON ANGLE $\pm 1^\circ$ $0.xx^\circ = \pm 0.01^\circ$ $0.xxx^\circ = \pm 0.005^\circ$ INTERPRET DIM AND TOL PER ASME Y14.5M-1994		APPROVALS		 1630 MCCARTHY BLVD. MILPITAS, CA 95033 PH: (408) 432-1900 LTC CONFIDENTIAL FOR CUSTOMER USE ONLY		
		PCB DES.	MIKE P.	02-08-18		
		ENG	MIKE P.	02-08-18		
THIRD ANGLE PROJECTION					TITLE: 2 - INNER COPPER LTC2972UJF 2-CHANNEL POWER SYSTEM MANAGER	
						
DO NOT SCALE DRAWING		SCALE: NONE		FILENAME: DC2619A_Rev1		SHEET 8 OF 13



REVISION HISTORY				
ECO	REV	DESCRIPTION	APPROVED	DATE
-	1	PRODUCTION	MIKE P.	02/08/2018



UNLESS OTHERWISE SPECIFIED DIMENSIONS ARE IN INCHES TOLERANCES ON ANGLE +/- 1° 0.XX" = +/- 0.01" 0.XXX" = +/- 0.005" INTERPRET DIM AND TOL PER ASME Y14.5M-1994		APPROVALS		 1630 MCCARTHY BLVD. MILPITAS, CA 95033 PH: (408) 432-1900 LTC CONFIDENTIAL FOR CUSTOMER USE ONLY	
		NAME	DATE		
THIRD ANGLE PROJECTION		PCB DES. MIKE P.	02-08-18	TITLE: 3 - INNER COPPER LTC2972UJF 2-CHANNEL POWER SYSTEM MANAGER	
		ENG MIKE P.	02-08-18		
DO NOT SCALE DRAWING		SCALE: NONE	FILENAME: DC2619A_Rev1	SIZE N/A IC NO. LTC2972 DEMO CIRCUIT 2619A	REV 1

1630 MCCARTHY BLVD.  
MILPITAS, CA 95033  
PH: (408) 432-1900  
LTC CONFIDENTIAL  
FOR CUSTOMER USE ONLY



TITLE: 3 - INNER COPPER  
LTC2972UJF 2-CHANNEL  
POWER SYSTEM MANAGER

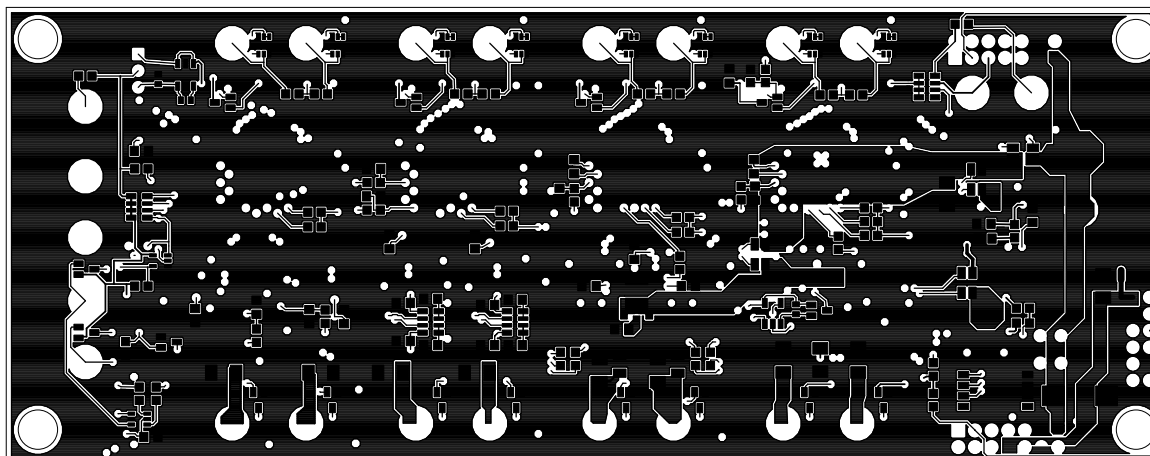
SIZE N/A  
IC NO. LTC2972  
DEMO CIRCUIT 2619A


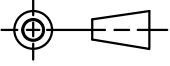
REV 1

FILENAME: DC2619A\_Rev1

SHEET 9 OF 13

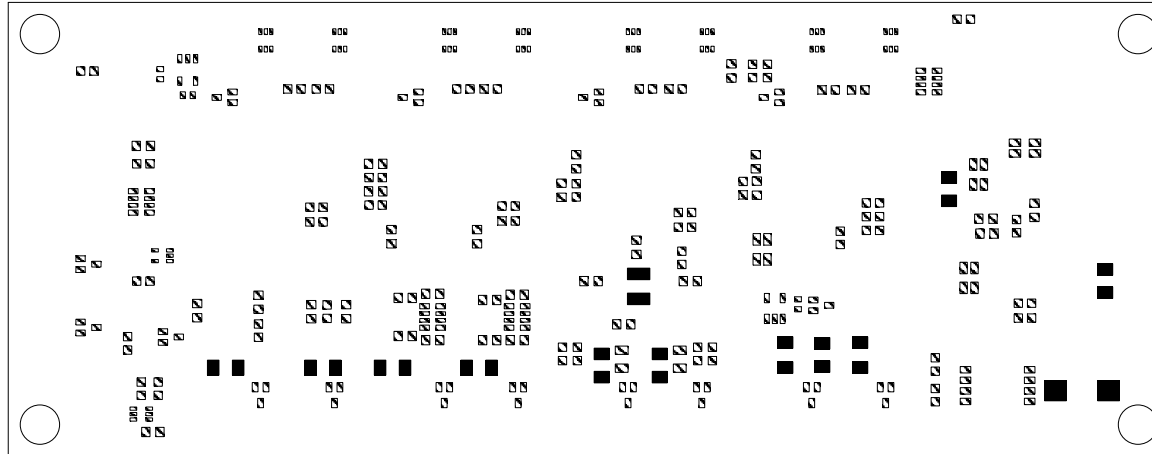
REVISION HISTORY				
ECO	REV	DESCRIPTION	APPROVED	DATE
-	1	PRODUCTION	MIKE P.	02/08/2018


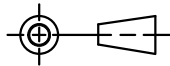


UNLESS OTHERWISE SPECIFIED DIMENSIONS ARE IN INCHES TOLERANCES ON ANGLE $\pm 1^\circ$ $0.XX^\circ = \pm 0.01^\circ$ $0.XXX^\circ = \pm 0.005^\circ$ INTERPRET DIM AND TOL PER ASME Y14.5M-1994		<b>APPROVALS</b>		 1630 MCCARTHY BLVD. MILPITAS, CA 95033 PH: (408) 432-1900 LTC CONFIDENTIAL FOR CUSTOMER USE ONLY		
		PCB DES.	MIKE P.	02-08-18		
		ENG	MIKE P.	02-08-18		
THIRD ANGLE PROJECTION					<b>TITLE: 4 - BOTTOM COPPER</b> <b>LTC2972UJF 2-CHANNEL</b> <b>POWER SYSTEM MANAGER</b>	
						
DO NOT SCALE DRAWING		SCALE: NONE		FILENAME: DC2619A_Rev1		SHEET 10 OF 13
				SIZE N/A IC NO. LTC2972 DEMO CIRCUIT 2619A REV 1		

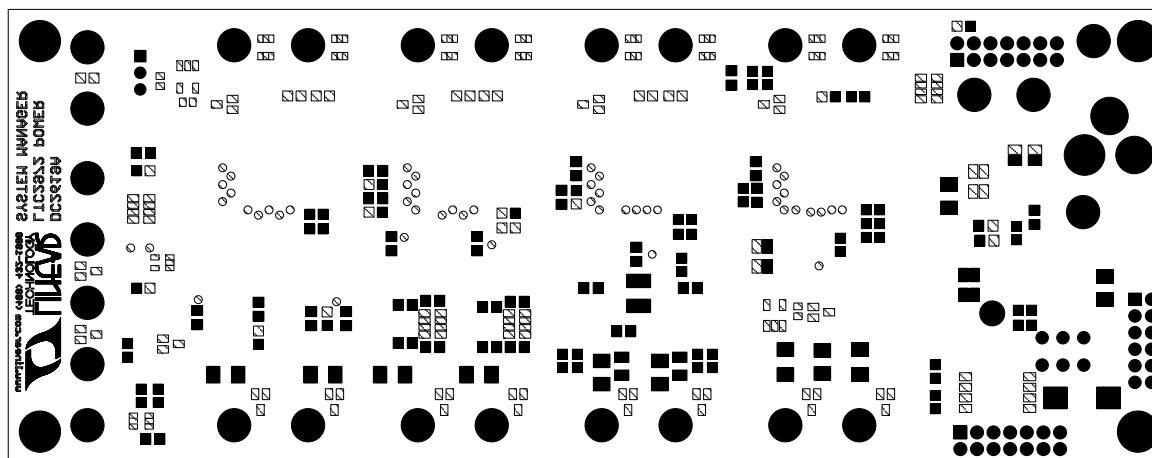
# REVISION HISTORY


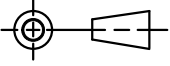
ECO	REV	DESCRIPTION	APPROVED	DATE
-	1	PRODUCTION	MIKE P.	02/08/2018



UNLESS OTHERWISE SPECIFIED DIMENSIONS ARE IN INCHES TOLERANCES ON ANGLE +/- 1° 0.XX" = +/- 0.01" 0.XXX" = +/- 0.005" INTERPRET DIM AND TOL PER ASME Y14.5M-1994		<b>APPROVALS</b>		 1630 MCCARTHY BLVD. MILPITAS, CA 95033 PH: (408) 432-1900 LTC CONFIDENTIAL FOR CUSTOMER USE ONLY			
		PCB DES.	MIKE P.	02-08-18	<b>TITLE: BOTTOM PASTE</b> <b>LTC2972UJF 2-CHANNEL</b> <b>POWER SYSTEM MANAGER</b>		
		ENG	MIKE P.	02-08-18			
THIRD ANGLE PROJECTION							
							
DO NOT SCALE DRAWING		SCALE: NONE		SIZE N/A	IC NO. LTC2972 DEMO CIRCUIT 2619A	REV 1	
FILENAME: DC2619A_Rev1				SHEET 11 OF 13			

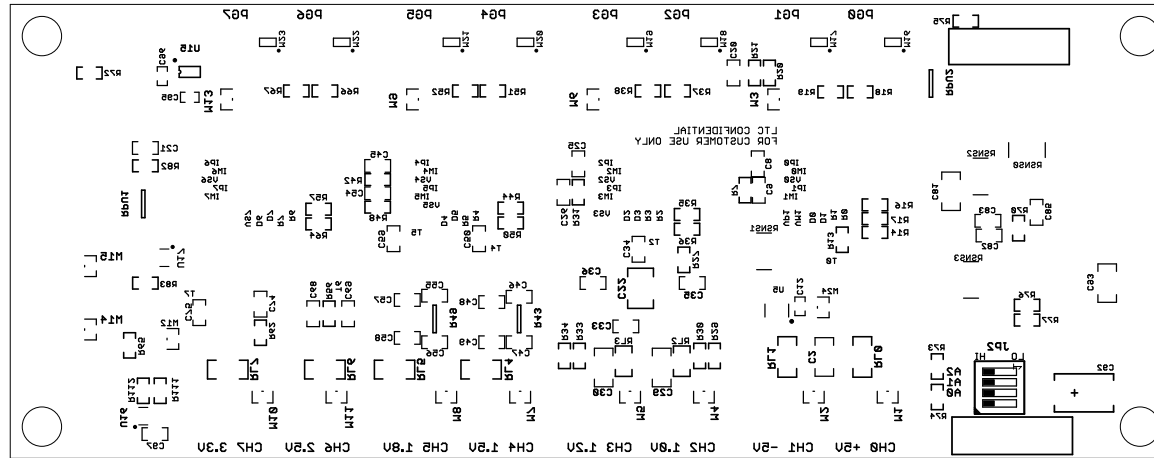
REVISION HISTORY				
ECO	REV	DESCRIPTION	APPROVED	DATE
-	1	PRODUCTION	MIKE P.	02/08/2018


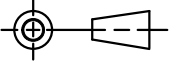


UNLESS OTHERWISE SPECIFIED DIMENSIONS ARE IN INCHES TOLERANCES ON ANGLE +/- 1° 0.XX" = +/- 0.01" 0.XXX" = +/- 0.005" INTERPRET DIM AND TOL PER ASME Y14.5M-1994	APPROVALS		 1630 MCCARTHY BLVD. MILPITAS, CA 95033 PH: (408) 432-1900 LTC CONFIDENTIAL FOR CUSTOMER USE ONLY	
	NAME	DATE		
	PCB DES. MIKE P.	02-08-18		
	ENG MIKE P.	02-08-18		
THIRD ANGLE PROJECTION			TITLE: BOTTOM SOLDERMASK LTC2972UJF 2-CHANNEL POWER SYSTEM MANAGER	
				
DO NOT SCALE DRAWING	SCALE: NONE	FILENAME: DC2619A_Rev1	SIZE N/A IC NO. LTC2972 DEMO CIRCUIT 2619A	REV 1

# REVISION HISTORY

ECO	REV	DESCRIPTION	APPROVED	DATE
-	1	PRODUCTION	MIKE P.	02/08/2018



UNLESS OTHERWISE SPECIFIED DIMENSIONS ARE IN INCHES TOLERANCES ON ANGLE +/- 1° 0.XX" = +/- 0.01" 0.XXX" = +/- 0.005" INTERPRET DIM AND TOL PER ASME Y14.5M-1994		APPROVALS		 1630 MCCARTHY BLVD. MILPITAS, CA 95033 PH: (408) 432-1900 LTC CONFIDENTIAL FOR CUSTOMER USE ONLY
		NAME	DATE	
PCB DES.	MIKE P.	02-08-18		TITLE: BOTTOM SILKSCREEN LTC2972UJF 2-CHANNEL POWER SYSTEM MANAGER
ENG	MIKE P.	02-08-18		
THIRD ANGLE PROJECTION				SIZE N/A
				
DO NOT SCALE DRAWING		SCALE: NONE		IC NO. LTC2972 DEMO CIRCUIT 2619A
		FILENAME: DC2619A_Rev1		REV 1 SHEET 13 OF 13