

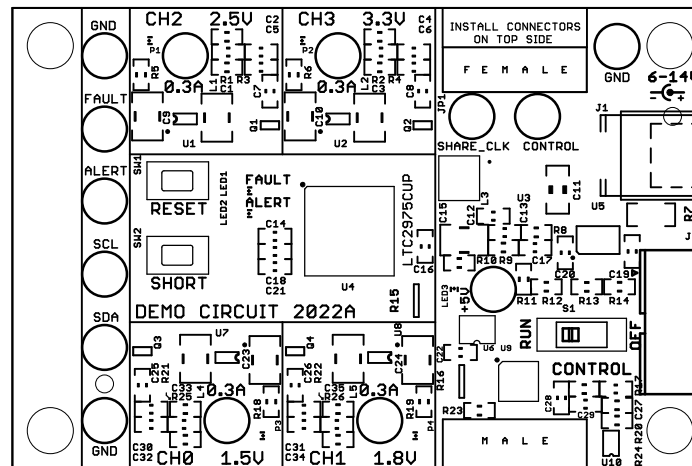
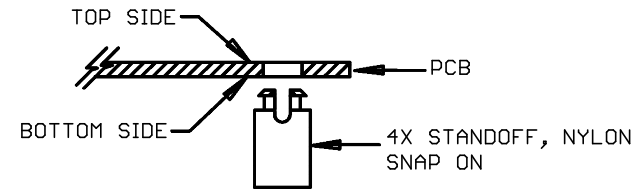
REVISION HISTORY

ECO	REV	DESCRIPTION	APPROVED	DATE
-	1	PRODUCTION	MIKE P.	01/12/2014

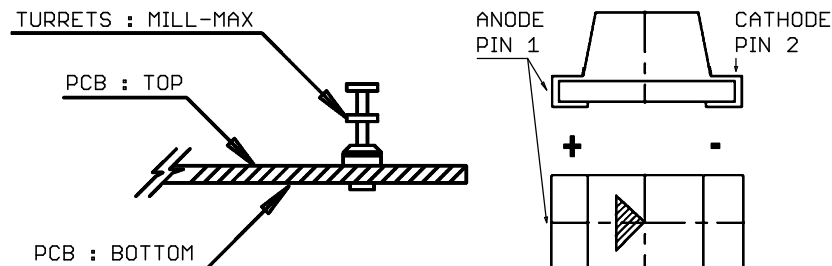
NOTES: UNLESS OTHERWISE SPECIFIED


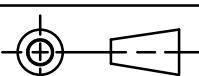
1. WORKMANSHIP SHALL BE IN ACCORDANCE WITH IPC-A-610.
2. PARTS TO OMIT WILL BE SPECIFIED ON THE BILL OF MATERIALS. MASK THE SOLDER STENCIL WHERE SMT PARTS ARE OMITTED.
3. DEPANELIZE BOARDS AFTER ASSEMBLY AND ROUTE-OUT THE BREAKOUT TABS ON 4 SIDES OF THE BOARD EDGE.
4. ASSY PROCESS SHALL INCLUDE: REFLOW SOLDER TOP SIDE SMD.
5. DO NOT APPLY ANY KIND OF ASSEMBLY STAMP OR QA STAMP ON ANY BOARD.

6. INSTALL 4 STANDOFFS AT 4 CORNERS FROM THE BOTTOM SIDE.



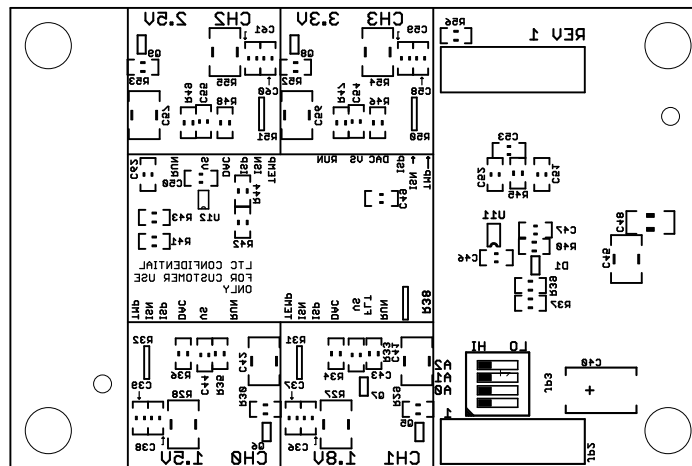
7. INSTALL TURRETS and LEDS AS SHOWN BELOW:



UNLESS OTHERWISE SPECIFIED DIMENSIONS ARE IN INCHES TOLERANCES ON ANGLE +/- 1° 0.XX" = +/- 0.01" 0.XXX" = +/- 0.005" INTERPRET DIM AND TOL PER ASME Y14.5M-1994	APPROVALS				1630 MCCARTHY BLVD. MILPITAS, CA 95033 PH: (408) 432-1900 LTC CONFIDENTIAL FOR CUSTOMER USE ONLY		
		NAME	DATE				
	PCB DES.	R.S.	01-12-14	TITLE: TOP ASSEMBLY DRAWING LTC2975CUP 4-CHANNEL POWER SYSTEM MANAGER			
	ENG	MIKE P.	01-12-14				
THIRD ANGLE PROJECTION							
							
DO NOT SCALE DRAWING	SCALE: NONE			FILENAME: DC2022A_Rev1		SHEET 1 OF 13	

SIZE	IC NO.	REV
N/A	LTC2975 DEMO CIRCUIT 2022A	1

REVISION HISTORY				
ECO	REV	DESCRIPTION	APPROVED	DATE
-	1	PRODUCTION	MIKE P.	01/12/2014



	NAME	DATE
PCB DES.	R.S.	01-12-14
ENG	MIKE P.	01-12-14



TITLE: BOTTOM ASSEMBLY DRAWING
LTC2975CUP 4-CHANNEL
POWER SYSTEM MANAGER

SIZE N/A	IC NO. LTC2975 DEMO CIRCUIT 2022A	REV 1
-------------	--------------------------------------	----------

DO NOT SCALE DRAWING

SCALE: NONE

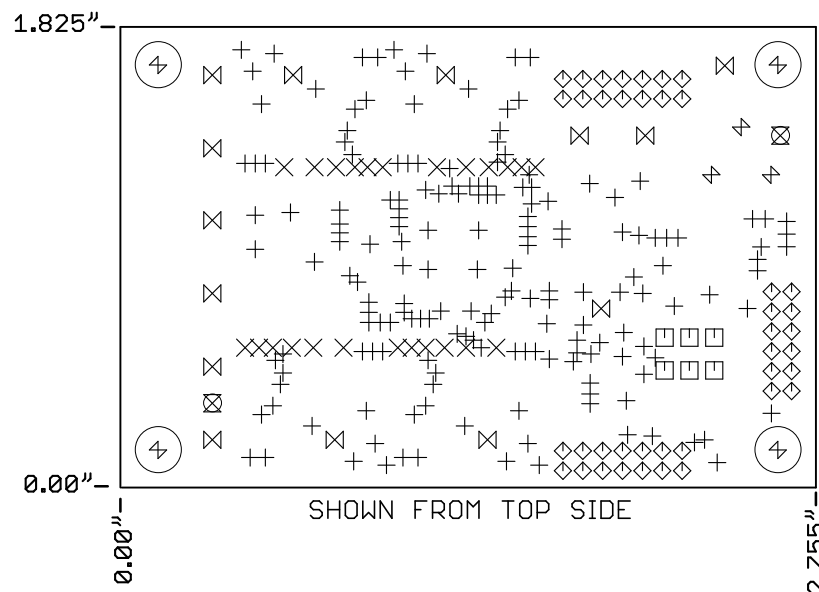
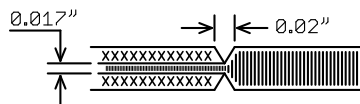
FILENAME: DC2022A_Rev1

SHEET 2 OF 13

NOTES: UNLESS OTHERWISE SPECIFIED

1. FAB PER IPC-A-600.
2. MATERIAL: EPOXY FIBERGLASS, NEMA GRADE FR-4
FINISHED THICKNESS TO BE 0.062" +/-0.005"
4-LAYER BOARD, 2 OZ. CU ON OUTER LAYERS,
1 OZ. CU ON INNER LAYERS,
FLAMMABILITY RATING: 94 V-2 MINIMUM.
3. SIZE: CUT TO DIMENSIONS AND TOLERANCES SHOWN.
0.00" ARE PRIMARY DATUMS.
4. FINISH: SMOBC USING LPI BOTH SIDES, COLOR BLACK.
ENIG FINISH. LEAD FREE SOLDER CAN BE USED
FOR PROTOTYPE BOARDS.
HIGH DEFINITION WHITE SILKSCREEN.

5. DRILL: PLATE THRU ALL HOLES WITH COPPER, 0.001"
THICK MIN. ALL HOLES SHALL BE DRILLED
+/-0.003" WITH RESPECT TO CTR. OF DRILLED
PAD. ALL HOLES FINISHED SIZE AFTER PLATING.
6. DROP ALL UNUSED PADS ON INNER LAYERS.
7. DO NOT ALTER ARTWORK e.g. TO ADD LOGO OR DATE CODE.
PAD SIZE CAN BE MODIFIED TO MEET END FINISH.
8. PCBs ARE TO BE RoHS COMPLIANT.
9. SCORING FOR PANELIZED PCB:



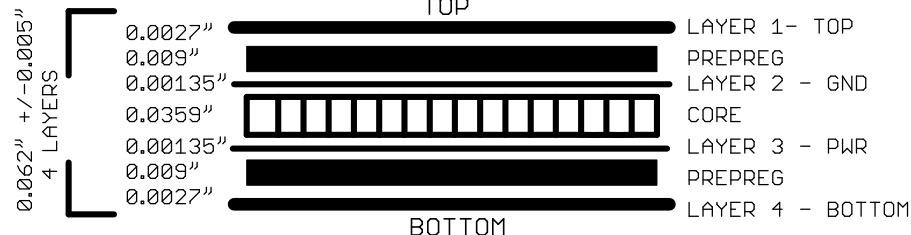
REVISION HISTORY


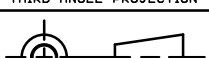
ECO	REV	DESCRIPTION	APPROVED	DATE
-	1	PRODUCTION	MIKE P.	01/12/2014

DRILL TABLE

Sym	Nº	Mils	MM	Qty	Plated
+	1	10	0.25	177	YES
X	2	15	0.38	24	YES
□	3	35	0.90	6	YES
◇	4	36	0.91	40	YES
⊗	5	71	1.80	2	NOT
⊗	6	96	2.44	14	YES
⊗	7	118	3.00	3	YES
⊗	8	183	4.65	4	NOT

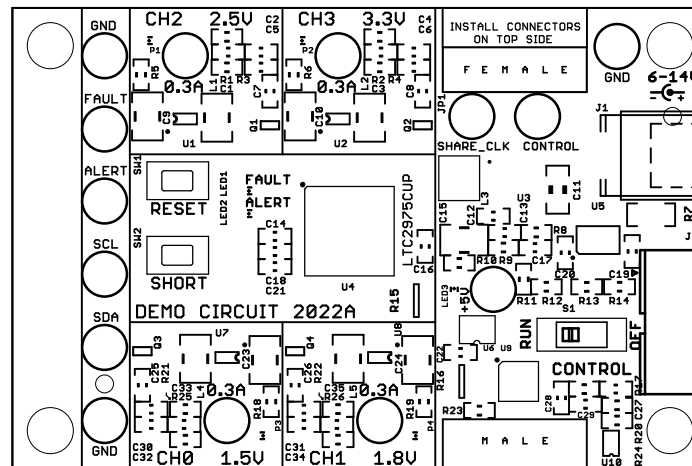
LAYER STRUCTURE


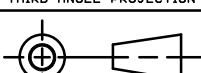


UNLESS OTHERWISE SPECIFIED DIMENSIONS ARE IN INCHES TOLERANCES ON ANGLE +/- 1° 0.XX" = +/- 0.01" 0.XXX" = +/- 0.005" INTERPRET DIM AND TOL PER ASME Y14.5M-1994	APPROVALS				1630 MCCARTHY BLVD. MILPITAS, CA 95033 PH: (408) 432-1900 LTC CONFIDENTIAL FOR CUSTOMER USE ONLY		
		NAME	DATE				
	PCB DES.	R.S.	01-12-14				
	ENG	MIKE P.	01-12-14				
THIRD ANGLE PROJECTION					TITLE: FABRICATION DRAWING LTC2975CUP 4-CHANNEL POWER SYSTEM MANAGER		
							
DO NOT SCALE DRAWING	SCALE: NONE			SIZE	IC NO.	REV	
				N/A	LTC2975 DEMO CIRCUIT 2022A	1	
				FILENAME: DC2022A_Rev1		SHEET 3 OF 13	

REVISION HISTORY

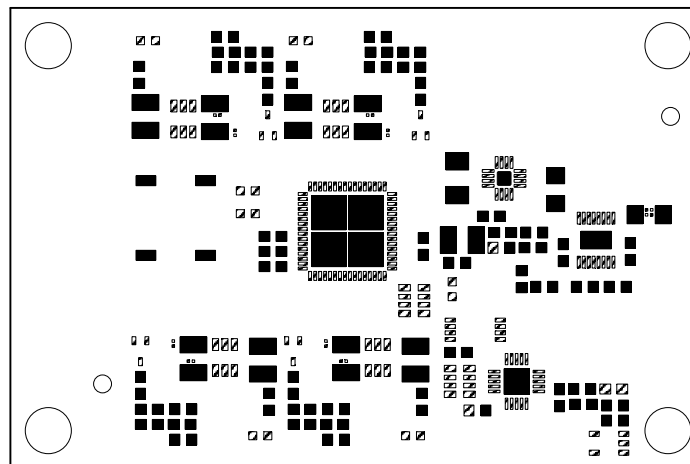
ECO	REV	DESCRIPTION	APPROVED	DATE
-	1	PRODUCTION	MIKE P.	01/12/2014



UNLESS OTHERWISE SPECIFIED DIMENSIONS ARE IN INCHES TOLERANCES ON ANGLE +/- 1° 0.XX" = +/- 0.01" 0.XXX" = +/- 0.005" INTERPRET DIM AND TOL PER ASME Y14.5M-1994	APPROVALS				1630 MCCARTHY BLVD. MILPITAS, CA 95033 PH: (408) 432-1900 LTC CONFIDENTIAL FOR CUSTOMER USE ONLY	
		NAME	DATE			
	PCB DES.	R.S.	01-12-14	TITLE: TOP SILKSCREEN LTC2975CUP 4-CHANNEL POWER SYSTEM MANAGER		
	ENG	MIKE P.	01-12-14			
THIRD ANGLE PROJECTION						
						
DO NOT SCALE DRAWING	SCALE: NONE			SIZE N/A	IC NO. LTC2975 DEMO CIRCUIT 2022A	REV 1
FILENAME: DC2022A_Rev1				SHEET 4 OF 13		

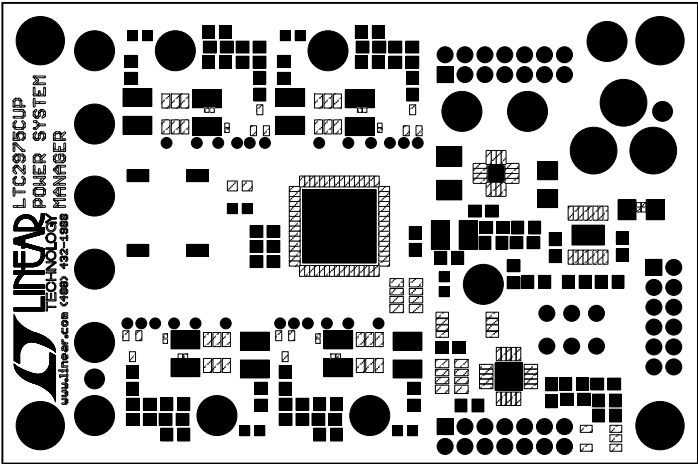
REVISION HISTORY


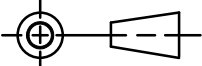
ECO	REV	DESCRIPTION	APPROVED	DATE
-	1	PRODUCTION	MIKE P.	01/12/2014



<p>UNLESS OTHERWISE SPECIFIED DIMENSIONS ARE IN INCHES TOLERANCES ON ANGLE +/- 1° 0.XX" = +/- 0.01" 0.XXX" = +/- 0.005" INTERPRET DIM AND TOL PER ASME Y14.5M-1994</p> <p>THIRD ANGLE PROJECTION</p> <p>DO NOT SCALE DRAWING</p>	<p>APPROVALS</p> <table border="1"> <tr> <th></th> <th>NAME</th> <th>DATE</th> </tr> <tr> <td>PCB DES.</td> <td>R.S.</td> <td>01-12-14</td> </tr> <tr> <td>ENG</td> <td>MIKE P.</td> <td>01-12-14</td> </tr> <tr> <td></td> <td></td> <td></td> </tr> <tr> <td></td> <td></td> <td></td> </tr> <tr> <td></td> <td></td> <td></td> </tr> </table>				NAME	DATE	PCB DES.	R.S.	01-12-14	ENG	MIKE P.	01-12-14										<p>LINEAR TECHNOLOGY</p> <p>1630 MCCARTHY BLVD. MILPITAS, CA 95033 PH: (408) 432-1900 LTC CONFIDENTIAL FOR CUSTOMER USE ONLY</p>		
		NAME	DATE																					
	PCB DES.	R.S.	01-12-14																					
	ENG	MIKE P.	01-12-14																					
<p>TITLE: TOP PASTE LTC2975CUP 4-CHANNEL POWER SYSTEM MANAGER</p>																								
<p>SIZE N/A</p>		<p>IC NO. LTC2975 DEMO CIRCUIT 2022A</p>		<p>REV 1</p>																				
<p>FILENAME: DC2022A_Rev1</p>		<p>SHEET 5 OF 13</p>																						

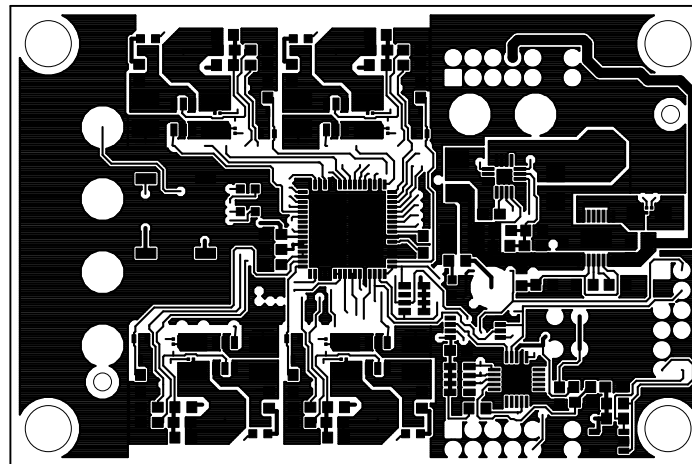
REVISION HISTORY				
ECO	REV	DESCRIPTION	APPROVED	DATE
-	1	PRODUCTION	MIKE P.	01/12/2014



UNLESS OTHERWISE SPECIFIED DIMENSIONS ARE IN INCHES TOLERANCES ON ANGLE +/- 1° 0.XX" = +/- 0.01" 0.XXX" = +/- 0.005" INTERPRET DIM AND TOL PER ASME Y14.5M-1994	APPROVALS			 <div> 1630 MCCARTHY BLVD. MILPITAS, CA 95033 PH: (408) 432-1900 LTC CONFIDENTIAL FOR CUSTOMER USE ONLY </div>
		NAME	DATE	
	PCB DES.	R.S.	01-12-14	
	ENG	MIKE P.	01-12-14	
THIRD ANGLE PROJECTION				TITLE: TOP SOLDERMASK LTC2975CUP 4-CHANNEL POWER SYSTEM MANAGER
				
DO NOT SCALE DRAWING	SCALE: NONE	FILENAME: DC2022A_Rev1	SIZE N/A	IC NO. LTC2975 DEMO CIRCUIT 2022A
			REV 1	
			SHEET 6	OF 13

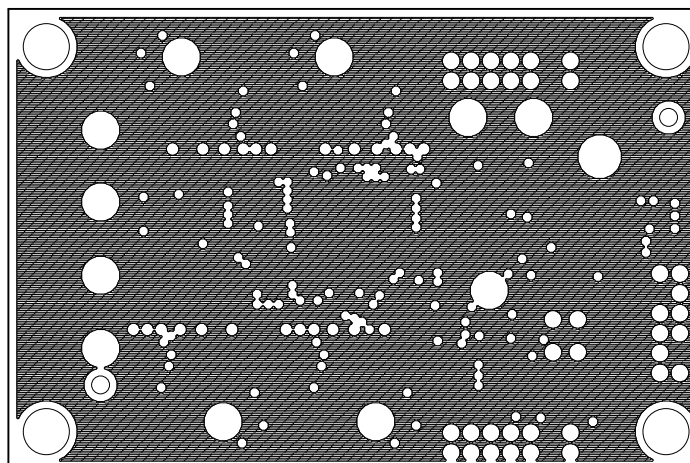
REVISION HISTORY


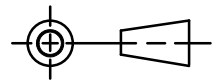
ECO	REV	DESCRIPTION	APPROVED	DATE
-	1	PRODUCTION	MIKE P.	01/12/2014



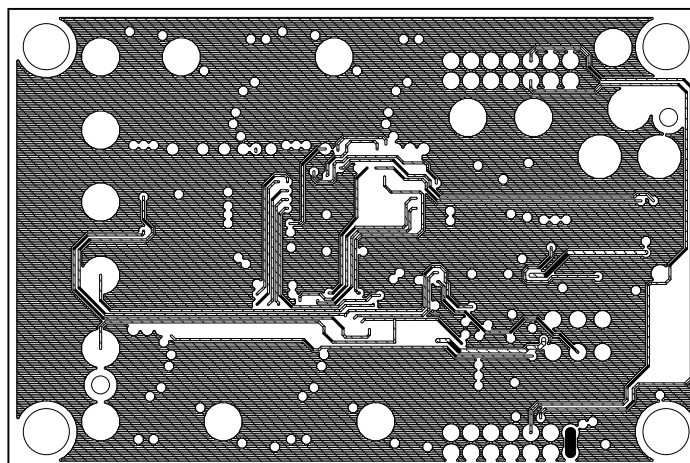
<p>UNLESS OTHERWISE SPECIFIED DIMENSIONS ARE IN INCHES TOLERANCES ON ANGLE +/- 1° 0.XX" = +/- 0.01" 0.XXX" = +/- 0.005" INTERPRET DIM AND TOL PER ASME Y14.5M-1994</p>	<p>APPROVALS</p>			<p>LINEAR TECHNOLOGY</p> <p>1630 MCCARTHY BLVD. MILPITAS, CA 95033 PH: (408) 432-1900 LTC CONFIDENTIAL FOR CUSTOMER USE ONLY</p>		
		NAME	DATE			
	PCB DES.	R.S.	01-12-14			
	ENG	MIKE P.	01-12-14			
THIRD ANGLE PROJECTION				<p>TITLE: 1 - TOP COPPER (SIGNAL) LTC2975CUP 4-CHANNEL POWER SYSTEM MANAGER</p>		
				<p>SIZE N/A</p>	<p>IC NO. LTC2975 DEMO CIRCUIT 2022A</p>	<p>REV 1</p>
DO NOT SCALE DRAWING	SCALE: NONE			FILENAME: DC2022A_Rev1		SHEET 7 OF 13


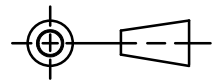
REVISION HISTORY				
ECO	REV	DESCRIPTION	APPROVED	DATE
-	1	PRODUCTION	MIKE P.	01/12/2014



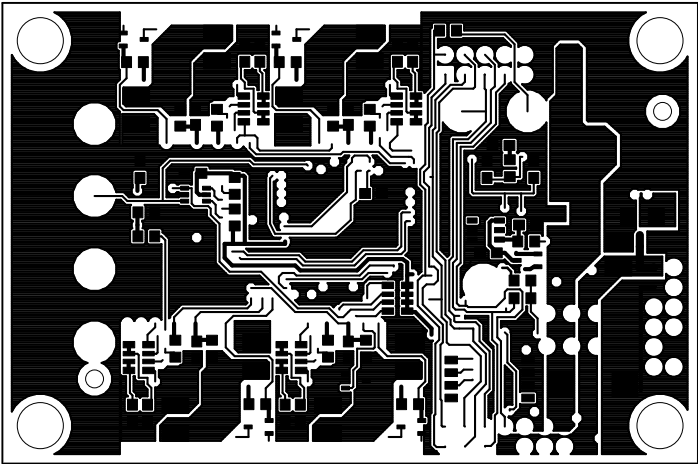
UNLESS OTHERWISE SPECIFIED DIMENSIONS ARE IN INCHES TOLERANCES ON ANGLE +/- 1° 0.XX" = +/- 0.01" 0.XXX" = +/- 0.005" INTERPRET DIM AND TOL PER ASME Y14.5M-1994	APPROVALS			 1630 MCCARTHY BLVD. MILPITAS, CA 95033 PH: (408) 432-1900 LTC CONFIDENTIAL FOR CUSTOMER USE ONLY	
		NAME	DATE		
	PCB DES.	R.S.	01-12-14		
	ENG	MIKE P.	01-12-14		
THIRD ANGLE PROJECTION				TITLE: 2 - INNER COPPER (GND PLANE) LTC2975CUP 4-CHANNEL POWER SYSTEM MANAGER	
					
DO NOT SCALE DRAWING	SCALE: NONE	FILENAME: DC2022A_Rev1	SIZE N/A	IC NO. LTC2975 DEMO CIRCUIT 2022A	REV 1
			SHEET 8 OF 13		

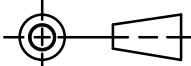

REVISION HISTORY				
ECO	REV	DESCRIPTION	APPROVED	DATE
-	1	PRODUCTION	MIKE P.	01/12/2014



UNLESS OTHERWISE SPECIFIED DIMENSIONS ARE IN INCHES TOLERANCES ON ANGLE +/- 1° 0.XX" = +/- 0.01" 0.XXX" = +/- 0.005" INTERPRET DIM AND TOL PER ASME Y14.5M-1994	APPROVALS			 1630 MCCARTHY BLVD. MILPITAS, CA 95033 PH: (408) 432-1900 LTC CONFIDENTIAL FOR CUSTOMER USE ONLY		
		NAME	DATE			
	PCB DES.	R.S.	01-12-14			
	ENG	MIKE P.	01-12-14			
THIRD ANGLE PROJECTION				TITLE: 3 - INNER COPPER (POWER) LTC2975CUP 4-CHANNEL POWER SYSTEM MANAGER		
				SIZE N/A	IC NO. LTC2975 DEMO CIRCUIT 2022A	REV 1
DO NOT SCALE DRAWING	SCALE: NONE			FILENAME: DC2022A_Rev1	SHEET 9 OF 13	

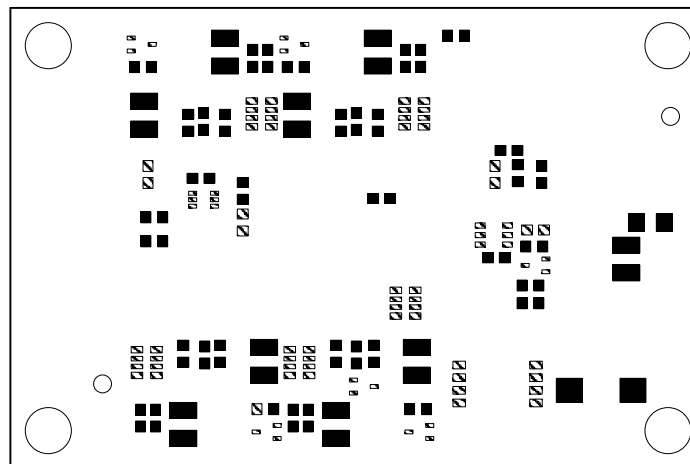
REVISION HISTORY				
ECO	REV	DESCRIPTION	APPROVED	DATE
-	1	PRODUCTION	MIKE P.	01/12/2014



UNLESS OTHERWISE SPECIFIED DIMENSIONS ARE IN INCHES TOLERANCES ON ANGLE +/- 1° 0.XX" = +/- 0.01" 0.XXX" = +/- 0.005" INTERPRET DIM AND TOL PER ASME Y14.5M-1994 THIRD ANGLE PROJECTION 	APPROVALS			 <div>1630 MCCARTHY BLVD. MILPITAS, CA 95033 PH: (408) 432-1900 LTC CONFIDENTIAL FOR CUSTOMER USE ONLY</div>		
		NAME	DATE			
	PCB DES.	R.S.	01-12-14			
	ENG	MIKE P.	01-12-14			
TITLE: 4 - BOTTOM COPPER (SIGNAL) LTC2975CUP 4-CHANNEL POWER SYSTEM MANAGER				SIZE N/A	IC NO. LTC2975 DEMO CIRCUIT 2022A	REV 1
DO NOT SCALE DRAWING		SCALE: NONE				
		FILENAME: DC2022A_Rev1				
				SHEET 10 OF 13		

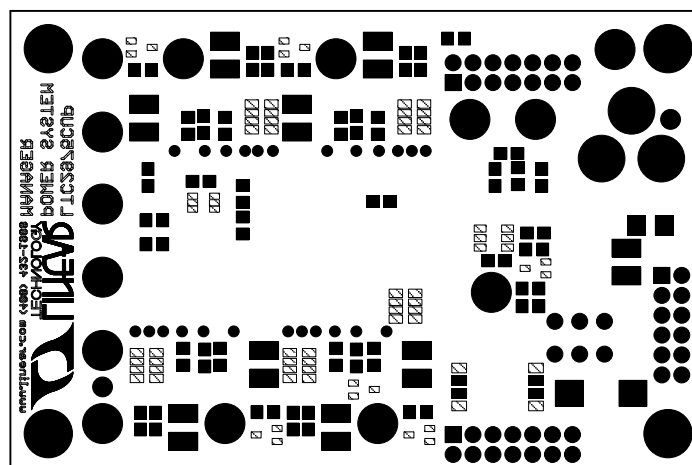
REVISION HISTORY


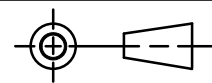
ECO	REV	DESCRIPTION	APPROVED	DATE
-	1	PRODUCTION	MIKE P.	01/12/2014



<p>UNLESS OTHERWISE SPECIFIED DIMENSIONS ARE IN INCHES TOLERANCES ON ANGLE +/- 1° 0.XX" = +/- 0.01" 0.XXX" = +/- 0.005" INTERPRET DIM AND TOL PER ASME Y14.5M-1994</p> <p>THIRD ANGLE PROJECTION</p> <p>DO NOT SCALE DRAWING</p>	<p>APPROVALS</p> <table border="1"> <thead> <tr> <th></th> <th>NAME</th> <th>DATE</th> </tr> </thead> <tbody> <tr> <td>PCB DES.</td> <td>R.S.</td> <td>01-12-14</td> </tr> <tr> <td>ENG</td> <td>MIKE P.</td> <td>01-12-14</td> </tr> <tr> <td></td> <td></td> <td></td> </tr> <tr> <td></td> <td></td> <td></td> </tr> <tr> <td></td> <td></td> <td></td> </tr> </tbody> </table>				NAME	DATE	PCB DES.	R.S.	01-12-14	ENG	MIKE P.	01-12-14										<p>LINEAR TECHNOLOGY</p> <p>1630 MCCARTHY BLVD. MILPITAS, CA 95033 PH: (408) 432-1900 LTC CONFIDENTIAL FOR CUSTOMER USE ONLY</p>		
		NAME	DATE																					
	PCB DES.	R.S.	01-12-14																					
	ENG	MIKE P.	01-12-14																					
<p>TITLE: BOTTOM PASTE LTC2975CUP 4-CHANNEL POWER SYSTEM MANAGER</p>																								
<p>SIZE N/A</p>		<p>IC NO. LTC2975 DEMO CIRCUIT 2022A</p>		<p>REV 1</p>																				
<p>FILENAME: DC2022A_Rev1</p>		<p>SHEET 11 OF 13</p>																						

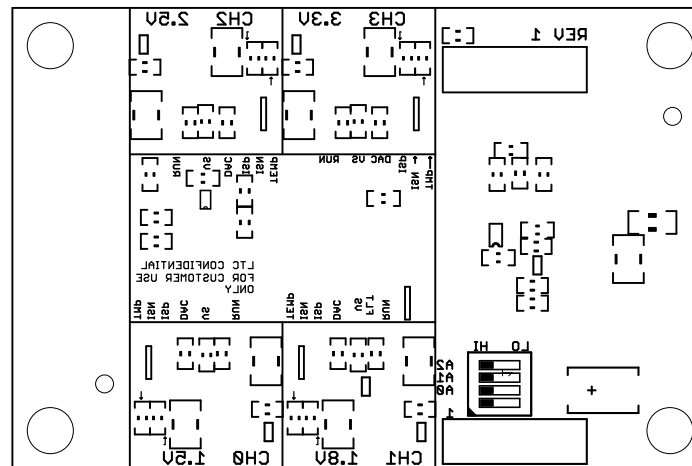
REVISION HISTORY				
ECO	REV	DESCRIPTION	APPROVED	DATE
-	1	PRODUCTION	MIKE P.	01/12/2014



UNLESS OTHERWISE SPECIFIED DIMENSIONS ARE IN INCHES TOLERANCES ON ANGLE +/- 1° 0.XX" = +/- 0.01" 0.XXX" = +/- 0.005" INTERPRET DIM AND TOL PER ASME Y14.5M-1994	APPROVALS			 <div>1630 MCCARTHY BLVD. MILPITAS, CA 95033 PH: (408) 432-1900 LTC CONFIDENTIAL FOR CUSTOMER USE ONLY</div>	
		NAME	DATE		
	PCB DES.	R.S.	01-12-14		
	ENG	MIKE P.	01-12-14		
THIRD ANGLE PROJECTION				TITLE: BOTTOM SOLDERMASK LTC2975CUP 4-CHANNEL POWER SYSTEM MANAGER	
					
DO NOT SCALE DRAWING	SCALE: NONE	FILENAME: DC2022A_Rev1	SIZE N/A	IC NO. LTC2975 DEMO CIRCUIT 2022A	REV 1
SHEET 12 OF 13					

REVISION HISTORY

ECO	REV	DESCRIPTION	APPROVED	DATE
-	1	PRODUCTION	MIKE P.	01/12/2014



<p>UNLESS OTHERWISE SPECIFIED DIMENSIONS ARE IN INCHES TOLERANCES ON ANGLE +/- 1° 0.XX" = +/- 0.01" 0.XXX" = +/- 0.005" INTERPRET DIM AND TOL PER ASME Y14.5M-1994</p> <p>THIRD ANGLE PROJECTION</p> <p>DO NOT SCALE DRAWING</p>	<p>APPROVALS</p> <table border="1"> <thead> <tr> <th></th> <th>NAME</th> <th>DATE</th> </tr> </thead> <tbody> <tr> <td>PCB DES.</td> <td>R.S.</td> <td>01-12-14</td> </tr> <tr> <td>ENG</td> <td>MIKE P.</td> <td>01-12-14</td> </tr> <tr> <td></td> <td></td> <td></td> </tr> <tr> <td></td> <td></td> <td></td> </tr> <tr> <td></td> <td></td> <td></td> </tr> </tbody> </table>				NAME	DATE	PCB DES.	R.S.	01-12-14	ENG	MIKE P.	01-12-14										<p>LINEAR TECHNOLOGY</p> <p>1630 MCCARTHY BLVD. MILPITAS, CA 95033 PH: (408) 432-1900 LTC CONFIDENTIAL FOR CUSTOMER USE ONLY</p>		
		NAME	DATE																					
	PCB DES.	R.S.	01-12-14																					
	ENG	MIKE P.	01-12-14																					
<p>TITLE: BOTTOM SILKSCREEN LTC2975CUP 4-CHANNEL POWER SYSTEM MANAGER</p>																								
<p>SIZE N/A</p>		<p>IC NO. LTC2975 DEMO CIRCUIT 2022A</p>		<p>REV 1</p>																				
<p>FILENAME: DC2022A_Rev1</p>		<p>SHEET 13 OF 13</p>																						