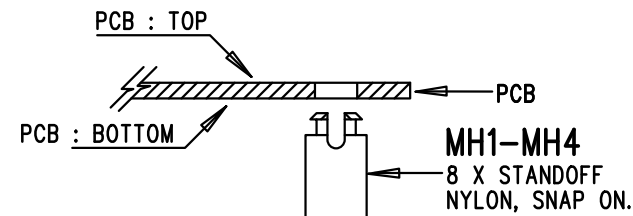


| REVISION HISTORY | | | | |
|------------------|-----|---------------|-----------|----------|
| ECO | REV | DESCRIPTION | APP. ENG. | DATE |
| - | 1 | 1ST PROTOTYPE | SAL A. | 07-14-16 |

NOTES: UNLESS OTHERWISE SPECIFIED

1. WORKMANSHIP SHALL BE IN ACCORDANCE WITH IPC-A-610.
2. ASSEMBLY PROCESS SHALL INCLUDE: REFLOW SOLDER TOP SIDE SMD. MAXIMUM SOLDER TEMPERATURE IS 240 DEGREES CELSIUS.
3. PARTS TO OMIT WILL BE SPECIFIED ON THE BILL OF MATERIALS. LOCATIONS OF OMITTED PARTS SHALL BE FREE OF SOLDER. MASK THE SOLDER STENCIL WHERE SMT PARTS ARE OMITTED.
4. INSTALL SHUNTS AS SHOWN.
5. DEPANELIZE BOARDS AFTER ASSEMBLY AND ROUTE-OUT THE BREAKOUT TABS ON FOUR SIDES OF THE BOARD EDGE.
6. DO NOT APPLY ANY KIND OF ASSEMBLY STAMP OR QA STAMP TO ANY BOARD.
7. INSTALL STANDOFFS AS SHOWN BELOW:



APPROVALS

PCB DES. KIM T.

APP ENG. SAL A.

LINEAR TECHNOLOGY

1630 MCCARTHY BLVD
MILPITAS, CA 95035
PH: (408)432-1900
www.linear.com
LTC CONFIDENTIAL-
FOR CUSTOMER USE ONLY

TITLE: TOP ASSEMBLY DRAWING

DUAL WIDE RANGE I2C POWER MONITOR

SIZE N/A IC NO. LTC2992IDE
DEMO CIRCUIT 2561A REV. 1

SCALE = NONE

FILENAME: DC2561A-1.PCB

SHT 1 OF 2