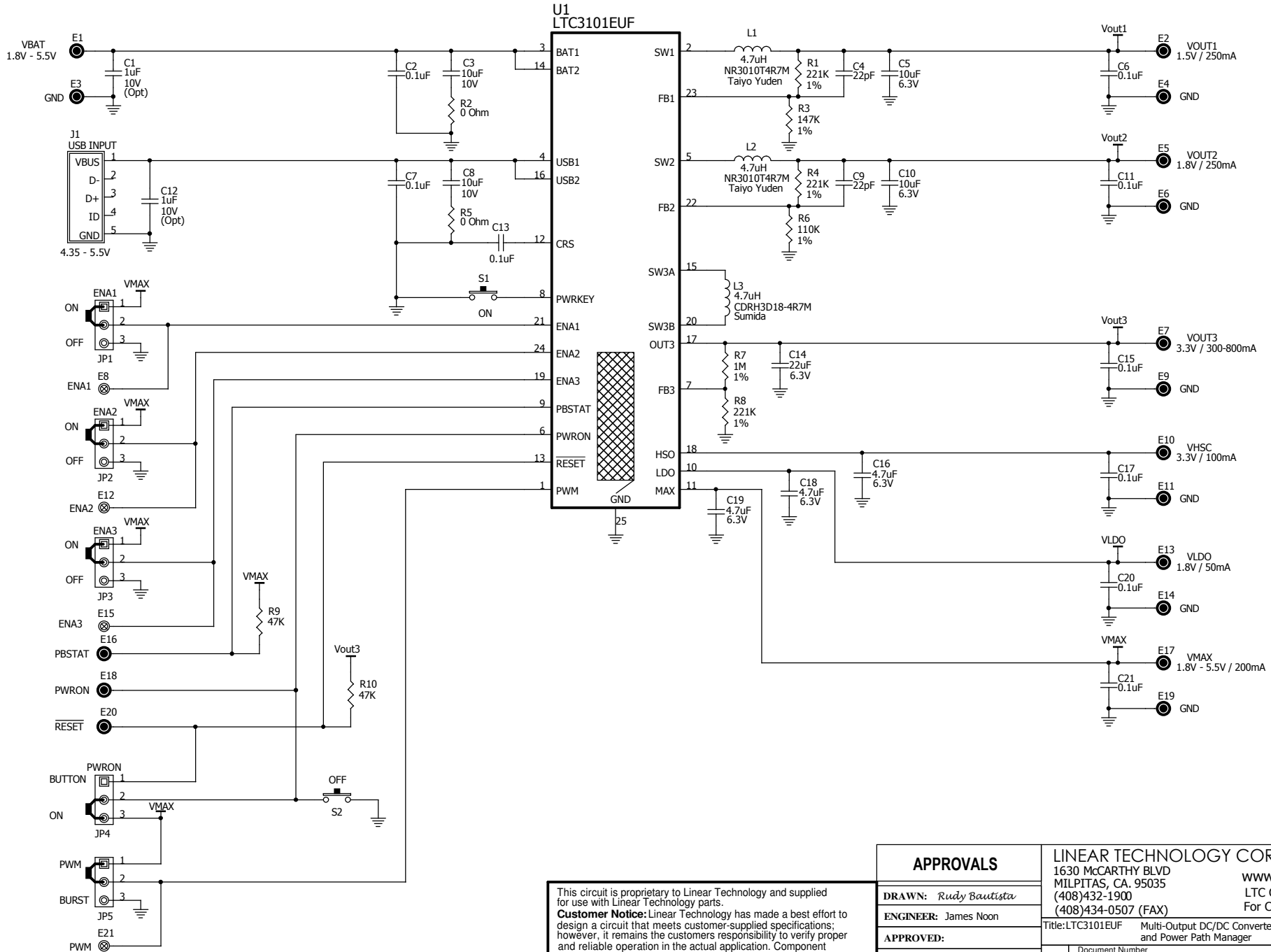


REVISION HISTORY				
ECO	REV	DESCRIPTION	DATE	APPROVED
	0	1st PROTOTYPE		
	1	2nd PROTOTYPE	10/08	



This circuit is proprietary to Linear Technology and supplied for use with Linear Technology parts.  
**Customer Notice:** Linear Technology has made a best effort to design a circuit that meets customer-supplied specifications; however, it remains the customer's responsibility to verify proper and reliable operation in the actual application. Component substitution and printed circuit board layout may significantly affect circuit performance or reliability. Contact Linear Applications Engineering for assistance.

APPROVALS		LINEAR TECHNOLOGY CORPORATION	
<b>DRAWN:</b> Rudy Bautista		1630 McCARTHY BLVD	www.linear.com
<b>ENGINEER:</b> James Noon		MILPITAS, CA. 95035	LTC Confidential -
<b>APPROVED:</b>		(408)432-1900	For Customer Use Only
<b>CHECKED:</b>		(408)434-0507 (FAX)	
		Title: LTC3101EUF Multi-Output DC/DC Converter	
		and Power Path Manager	
	SD	Document Number	Demo Circuit 1443A
Date: Tuesday, October 21, 2008	C:\ORCAD\WINCAPTURE\1443A\1443A_01_REV1.DSN	Sheet 1 of 1	Rev 1