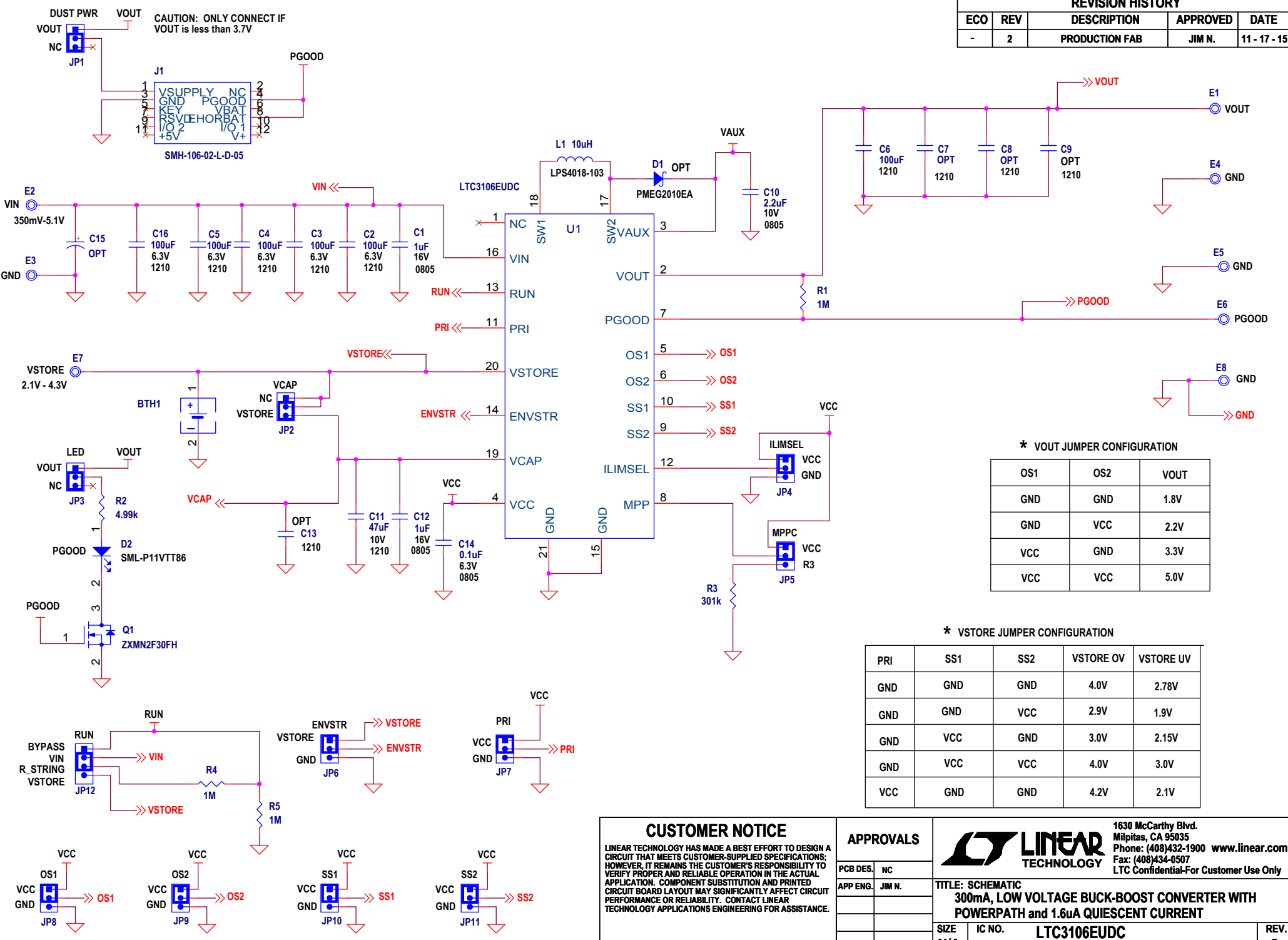


REVISION HISTORY				
ECO	REV	DESCRIPTION	APPROVED	DATE
-	2	PRODUCTION FAB	JIM N.	11 - 17 - 15



**\* VOUT JUMPER CONFIGURATION**

OS1	OS2	VOUT
GND	GND	1.8V
GND	VCC	2.2V
VCC	GND	3.3V
VCC	VCC	5.0V

**\* VSTORE JUMPER CONFIGURATION**

PRI	SS1	SS2	VSTORE OV	VSTORE UV
GND	GND	GND	4.0V	2.78V
GND	GND	VCC	2.9V	1.9V
GND	VCC	GND	3.0V	2.15V
GND	VCC	VCC	4.0V	3.0V
VCC	GND	GND	4.2V	2.1V

**CUSTOMER NOTICE**  
 LINEAR TECHNOLOGY HAS MADE A BEST EFFORT TO DESIGN A CIRCUIT THAT MEETS CUSTOMER-SUPPLIED SPECIFICATIONS; HOWEVER, IT REMAINS THE CUSTOMER'S RESPONSIBILITY TO VERIFY PROPER AND RELIABLE OPERATION IN THE ACTUAL APPLICATION. COMPONENT SUBSTITUTION AND PRINTED CIRCUIT BOARD LAYOUT MAY SIGNIFICANTLY AFFECT CIRCUIT PERFORMANCE OR RELIABILITY. CONTACT LINEAR TECHNOLOGY APPLICATIONS ENGINEERING FOR ASSISTANCE.

THIS CIRCUIT IS PROPRIETARY TO LINEAR TECHNOLOGY AND SUPPLIED FOR USE WITH LINEAR TECHNOLOGY PARTS.

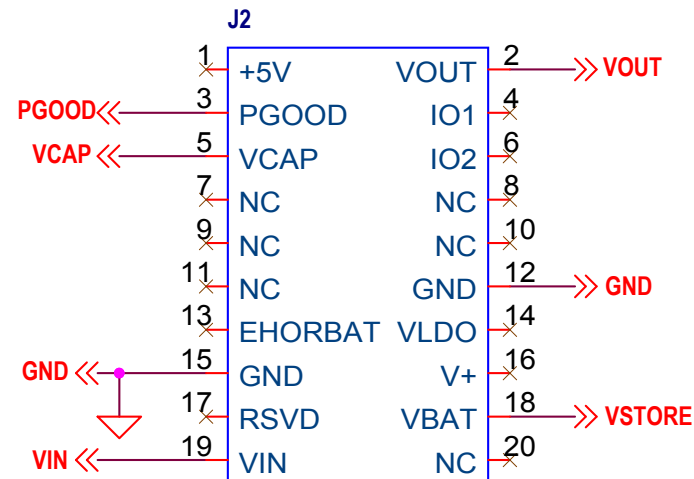
**APPROVALS**

PCB DES.	NC
APP ENG.	JIM N.
SCALE = NONE	

**LINEAR TECHNOLOGY**  
 1630 McCarthy Blvd.  
 Milpitas, CA 95035  
 Phone: (408)432-1900 www.linear.com  
 Fax: (408)434-0507  
 LTC Confidential-For Customer Use Only

TITLE: SCHEMATIC  
**300mA, LOW VOLTAGE BUCK-BOOST CONVERTER WITH POWERPATH and 1.6uA QUIESCENT CURRENT**

SIZE	IC NO.	REV.
N/A	LTC3106EUDC	2
DATE: 11 - 17 - 15		SHEET 1 OF 2



SFMH-1-10-02-L-D-WT

### CUSTOMER NOTICE

LINEAR TECHNOLOGY HAS MADE A BEST EFFORT TO DESIGN A CIRCUIT THAT MEETS CUSTOMER-SUPPLIED SPECIFICATIONS; HOWEVER, IT REMAINS THE CUSTOMER'S RESPONSIBILITY TO VERIFY PROPER AND RELIABLE OPERATION IN THE ACTUAL APPLICATION. COMPONENT SUBSTITUTION AND PRINTED CIRCUIT BOARD LAYOUT MAY SIGNIFICANTLY AFFECT CIRCUIT PERFORMANCE OR RELIABILITY. CONTACT LINEAR TECHNOLOGY APPLICATIONS ENGINEERING FOR ASSISTANCE.

THIS CIRCUIT IS PROPRIETARY TO LINEAR TECHNOLOGY AND SUPPLIED FOR USE WITH LINEAR TECHNOLOGY PARTS.

### APPROVALS

PCB DES.	NC
APP ENG.	JIM N.

SCALE = NONE



1630 McCarthy Blvd.  
 Milpitas, CA 95035  
 Phone: (408)432-1900 [www.linear.com](http://www.linear.com)  
 Fax: (408)434-0507  
 LTC Confidential-For Customer Use Only

**TITLE: SCHEMATIC**  
**300mA, ULTRA LOW QUIESCENT CURRENT, BUCK-BOOST**  
**POWER MANAGER WITH MAXIMUM POWER POINT CONTROL**

SIZE	IC NO.	LTC3106EUDC	REV.
N/A		DEMO CIRCUIT 2255A	2

DATE: 11 - 17 - 15

SHEET 2 OF 2