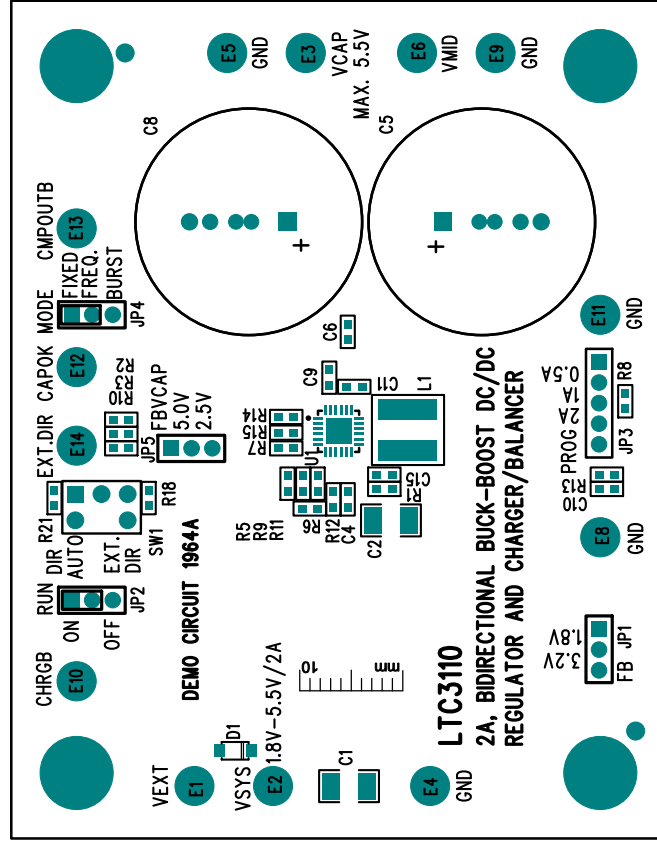



NOTES: UNLESS OTHERWISE SPECIFIED

1. WORKMANSHIP SHALL BE IN ACCORDANCE WITH IPC-A-610.
2. ASSEMBLY PROCESS SHALL INCLUDE: REFLOW SOLDER SIDE SMD.
MAXIMUM SOLDER TEMPERATURE IS 240 DEGREES CELSIUS.
3. PARTS TO OMIT WILL BE SPECIFIED ON THE BILL OF MATERIALS.
LOCATIONS OF OMITTED PARTS SHALL BE FREE OF SOLDER.
MASK THE SOLDER STENCIL WHERE SMT PARTS ARE OMITTED.
4. DEPANELIZE BOARDS AFTER ASSEMBLY AND ROUTE-OUT THE
BREAKOUT TABS ON FOUR SIDES OF THE BOARD EDGE.
5. DO NOT APPLY ANY KIND OF ASSEMBLY STAMP OR QA STAMP
TO ANY BOARD.



APPROVALS				1630 MCCARTHY BLVD MILPITAS, CA 95035 PH: (408) 432-1900 www.linear.com LTC CONFIDENTIAL - FOR CUSTOMER USE ONLY	
PCB DES.	HZ				
APP ENG.	VICTOR K.	TITLE: TOP ASSEMBLY DRAWING 2A, BIDIRECTIONAL BUCK-BOOST DC/DC REGULATOR AND CHARGER/BALANCER			
		SIZE	IC NO.	LTC3110EUF	REV.
		N/A	DEMO CIRCUIT 1964A		2
SCALE = NONE		FILENAME: DC1964A-2.PCB			SHT 1 OF 1