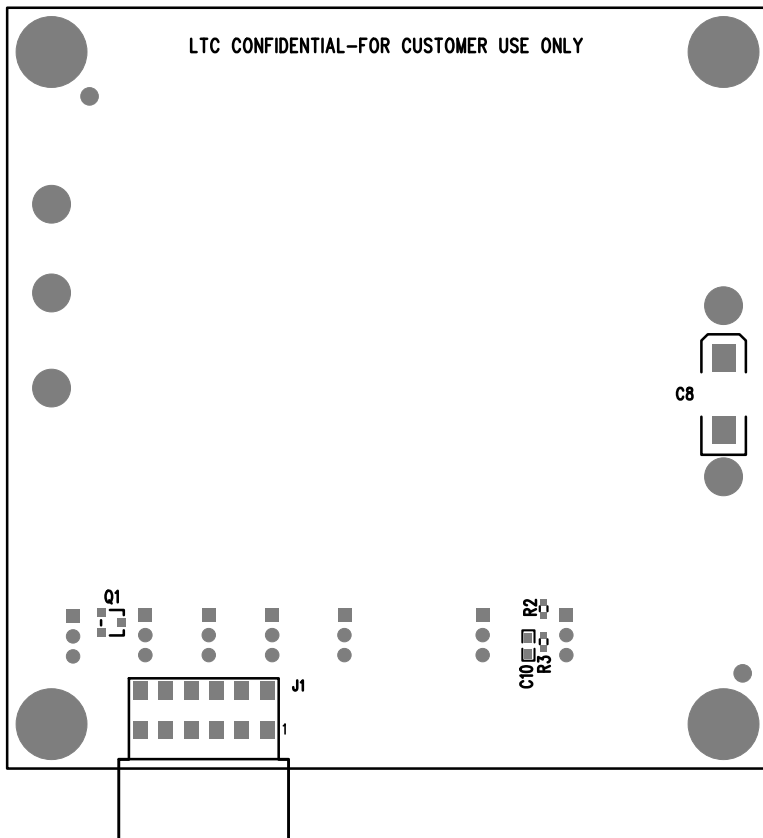
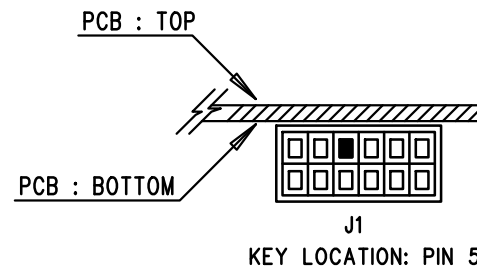


LTC CONFIDENTIAL-FOR CUSTOMER USE ONLY



1. ENSURE HEADER KEY FOR J1 IS INSTALLED AND LOCATED AS SHOWN BELOW:

FRONT VIEW OF SMT HEADER



APPROVALS

PCB DES.	NC
APP ENG.	J.NOON



1630 MCCARTHY BLVD
MILPITAS, CA 95035
PH: (408)432-1900
www.Linear.com
LTC CONFIDENTIAL-
FOR CUSTOMER USE ONLY

TITLE: BOTTOM ASSEMBLY DRAWING:
15V, 200mA SYNCHRONOUS BUCK-BOOST DC/DC
CONVERTER WITH 1.3uA QUIESCENT CURRENT

SIZE	IC NO.	LTC3129EUD-1	REV.
N/A		DEMO CIRCUIT 1923A	2

SCALE = NONE

FILENAME: DC1923A-2.PCB

SHT 2 of 2