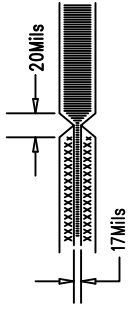


REVISIONS		
REV	APPR	DATE

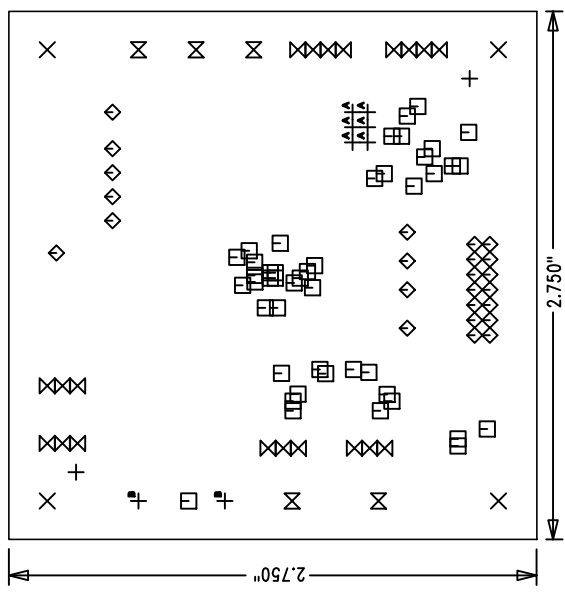
NOTES: UNLESS OTHERWISE SPECIFIED:

- 1. ARTWORK P/N Demo Circuit 1217A
- 2. FAB PER IPC-A-600. 4-Layers.
- 3. MATERIAL: EPOXY FIBERGLASS, NEMA GRADE FR-4 .062 +/- .005 INCH THICKNESS WITH 2 OZ. COPPER FINISH ON TWO OUTER LAYERS AND 1 OZ. COPPER ON TWO INTERNAL LAYERS. FLAMABILITY RATING: 94 V-2 MINIMUM .
- 4. SIZE: CUT TO DIMENSIONS AND TOLERANCES SHOWN.
- 5. BOARD: SELECTIVE PLATED BOARD. SOLDER MASK OVER BARE COPPER, COLOR, GREEN LPI. IMMERSION GOLD BOTH SIDES. SILKSCREEN COMPONENT SIDE WITH WHITE NON-CONDUCTIVE INK. PLATE THRU ALL HOLES WITH COPPER MIN. PLATING THICKNESS: 1 OZ. EXCEPT WHERE PLATING NOT REQUIRED.
- 6. DRILL: ALL HOLES SHALL BE DRILLED +/- .003 INCH WITH RESPECT TO CTR. OF DRILLED PAD. ALL HOLES FINISHED SIZE AFTER PLATING.
- 7. DROP ALL UNUSED PADS ON INNER LAYERS.
- 8. DO NOT ALTER ARTWORK e.g. TO ADD LOGO OR DATE CODE.
- 9. SCORING:



- 10. DO NOT ALTER SOLDER MASK MAINTAIN 1.8 CLEARANCE ON SMT PADS. MIN WEBBING OF 5 MILS

Fabrication Drawing



Linear Tech. Corp.
Demo Circuit 1217A
Fabrication Drawing

SIZE	QTY	SYM	PLATED	TOL
72	2	+	NO	+/-0.0
190	4	X	YES	+/-0.0
10	46	□	YES	+/-0.0
35	24	◇	YES	+/-0.0
31	20	⊗	YES	+/-0.0
63	5	⊗	YES	+/-0.0
30	6	⊕	YES	+/-0.0
94	2	⊕	YES	+/-0.0

APPROVALS

DRAWN	INIT	DATE
CHECK	NJC	1/22/07
DESIGN	NJC	
ENGR	MM	

1630 McCarthy Blvd.
Milpitas, CA 95035
PH: (408)432-1900

TITLE: LTC3230EUD

5-LED Main/Sub Display Driver with Dual LDO

SIZE NONE

Demo Circuit 1217A

REV. A

SCALE = NONE

DES-23xxxx

SHT 1 of 1