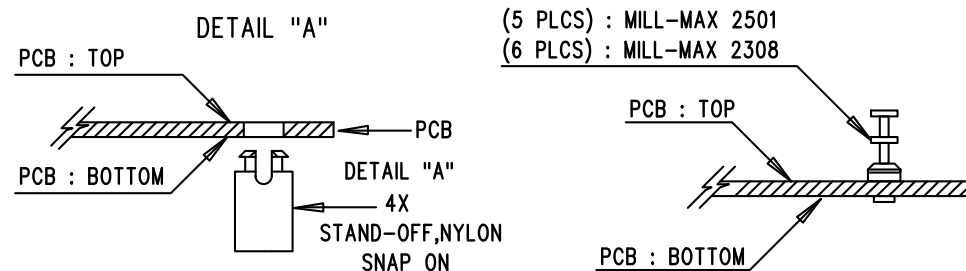


SEE DETAIL "A"

NOTES: UNLESS OTHERWISE SPECIFIED

1. WORKMANSHIP SHALL BE IN ACCORDANCE WITH IPC-A-610.
2. ASSEMBLY PROCESS SHALL INCLUDE: REFLOW SOLDER TOP SIDE SMD.
3. PARTS TO OMIT WILL BE SPECIFIED ON THE BILL OF MATERIALS
LOCATIONS OF OMITTED PARTS SHALL BE FREE OF SOLDER.
MASK THE SOLDER STENCIL WHERE SMT PARTS ARE OMITTED.
4. INSTALL SHUNTS AS SHOWN ON ASSY DRAWING.
5. DEPANELIZE BOARDS AFTER ASSEMBLY AND ROUTE-OUT THE BREAKOUT
TABS ON FOUR SIDES OF THE BOARD EDGE.
6. MAXIMUM SOLDER TEMPERATURE IS 240 DEGREES CELCIUS.
7. INSTALL TURRETS AND 4 STAND-OFFS AT FOUR CORNERS AS SHOWN BELOW:



APPROVALS

	NAME
PCB DES.	NC
APP ENG.	MM
SCALE = NONE	



1630 MCCARTHY BLVD
MILPITAS, CA 95035
PH: (408)432-1900
www.Linear.com
LTC CONFIDENTIAL-
FOR CUSTOMER USE ONLY

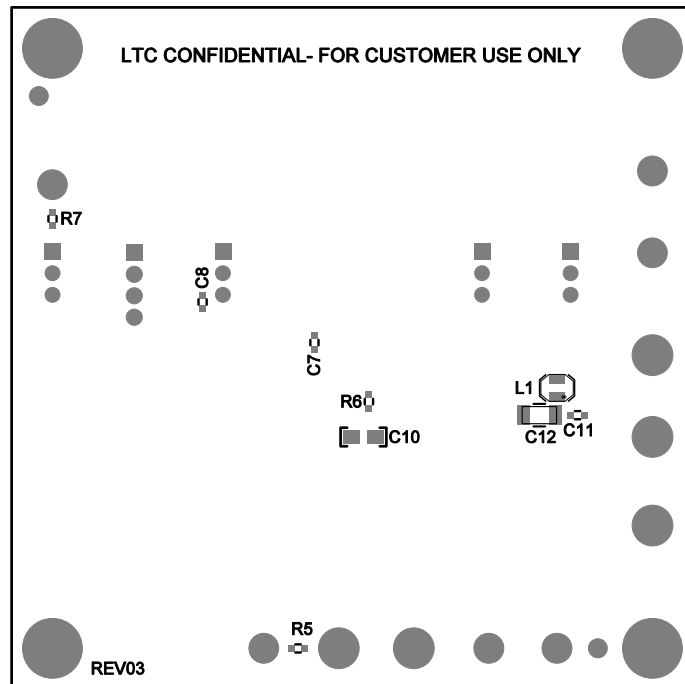
TITLE: TOP ASSEMBLY DRAWING:


WIDE VIN RANGE BUCK-BOOST
CHARGE PUMP WITH WATCHDOG TIMER

SIZE N/A	IC NO. LTC3246 DEMO CIRCUIT 2466A	REV. 03
-------------	--------------------------------------	------------

FILENAME:

SHT 1 of 2



APPROVALS		 LINEAR TECHNOLOGY 1630 MCCARTHY BLVD MILPITAS, CA 95035 PH: (408)432-1900 www.Linear.com LTC CONFIDENTIAL- FOR CUSTOMER USE ONLY	
	NAME		
PCB DES.	NC	TITLE: BOTTOM ASSEMBLY DRAWING: WIDE VIN RANGE BUCK-BOOST CHARGE PUMP WITH WATCHDOG TIMER	
APP ENG.	MM		
		SIZE N/A	IC NO. LTC3246 DEMO CIRCUIT 2466A
SCALE = NONE		FILENAME:	REV. 03
			SHT 2 of 2