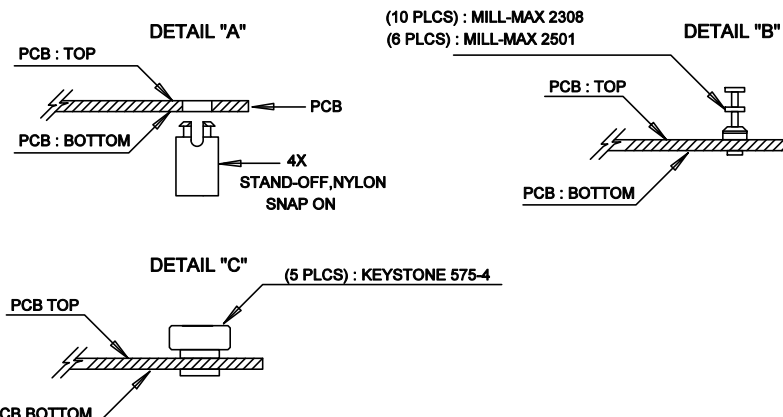
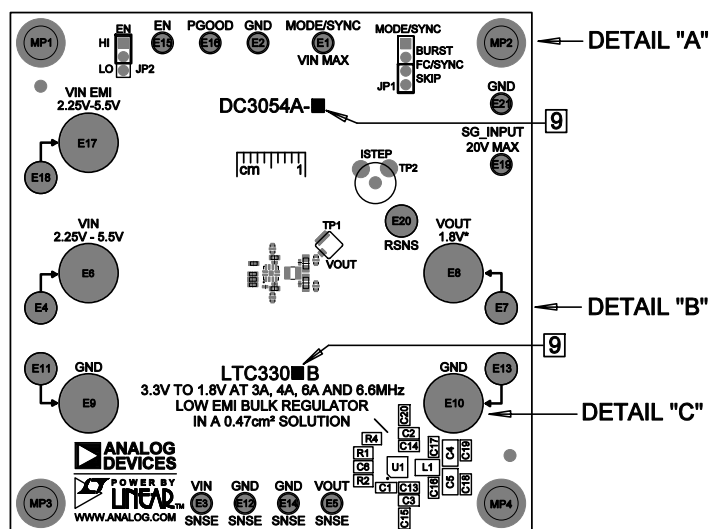


REVISION HISTORY				
ECO	REV	DESCRIPTION	APP. ENG.	DATE
-	03	PRODUCTION	KL	12/10/20

NOTES: UNLESS OTHERWISE SPECIFIED



1. WORKMANSHIP SHALL BE IN ACCORDANCE WITH IPC-A-610.
2. ASSEMBLY REFLOW PROFILE SHALL BE IN ACCORDANCE WITH J-STD-020 WITH MAXIMUM SOLDER TEMPERATURE OF 250 DEGREES CELSIUS.
3. PARTS TO OMIT WILL BE SPECIFIED ON THE BILL OF MATERIALS. LOCATIONS OF OMITTED PARTS SHALL BE FREE OF SOLDER. MASK THE SOLDER STENCIL WHERE SMT PARTS ARE OMITTED.
4. INSTALL SHUNTS AS SHOWN ON ASSY DRAWING.
5. DEPANELIZE BOARDS AFTER ASSEMBLY AND ROUTE-OUT THE BREAKOUT TABS ON FOUR SIDES OF THE BOARD EDGE.
6. APPLY ASSEMBLY STAMP OR QA STAMP TO BOTTOM OF BOARD (UNSHOWY AREA).
7. INSTALL TURRETS, STAND-OFFS AS SHOWN BELOW:
8. APPLY DEMO S/N AT AREA ON BOTTOM SIDE AS SHOWN ON SHEET 2.



9. MARK EACH LTC PART NUMBER AND DEMO BOARD SKU# WITH BLACK PERMANENT MARKER AS SHOWN IN THE TABLE BELOW:

* ASSEMBLY OPTIONS TABLE

SKU #	U1	IOUT
DC3054A-A	LTC3307B	3A
DC3054A-B	LTC3308B	4A
DC3054A-C	LTC3309B	6A

APPROVALS		 ANALOG DEVICES		 POWER BY LINEAR _{TM}	
PCB DES	NC	FOR ADI CUSTOMER USE ONLY			
APP ENG	KL	TITLE: TOP ASSEMBLY DRAWING			
		3.3V TO 1.8V AT 3A, 4A, 6A AND 6.6MHz LOW EMI			
		BULK REGULATOR IN A 0.47cm ² SOLUTION			
		SIZE	IC NO.	LTC3307B, LTC3308B, LTC3309B	REV.
		N/A		DC3054A-A/B/C	03
SCALE = NONE					SHT 1 OF 1