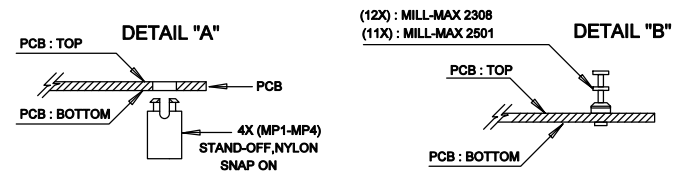
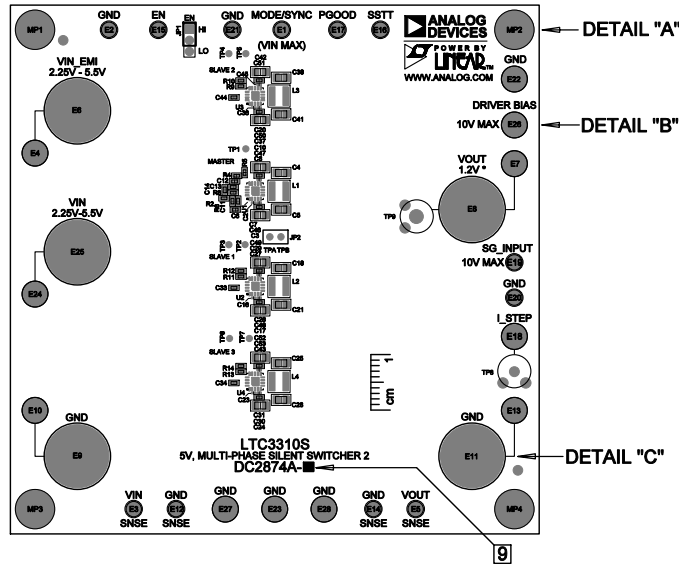


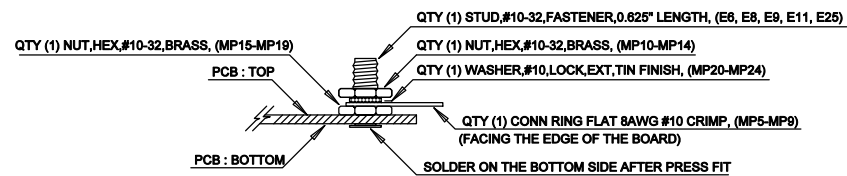
REVISION HISTORY			
ECO	REV	DESCRIPTION	APP. ENG. DATE
-	05	PRODUCTION	MM 07-22-19

# NOTES: UNLESS OTHERWISE SPECIFIED

1. WORKMANSHIP SHALL BE IN ACCORDANCE WITH IPC-A-610, CLASS 2.
2. ASSEMBLY REFLOW PROFILE SHALL BE IN ACCORDANCE WITH J-STD-020 WITH MAXIMUM SOLDER TEMPERATURE OF 250 DEGREES CELSIUS.
3. PARTS TO OMIT WILL BE SPECIFIED ON THE BILL OF MATERIALS  
LOCATIONS OF OMITTED PARTS SHALL BE FREE OF SOLDER.  
MASK THE SOLDER STENCIL WHERE SMT PARTS ARE OMITTED.
4. INSTALL SHUNTS AS SHOWN ON ASSY DRAWING.
5. DEPANELIZE BOARDS AFTER ASSEMBLY AND ROUTE-OUT THE BREAKOUT TABS ON FOUR SIDES OF THE BOARD EDGE.
6. APPLY ASSEMBLY STAMP OR QA STAMP TO BOTTOM OF BOARD (UNSHOWY AREA).
7. INSTALL TURRETS, STAND-OFFS AS SHOWN BELOW:
8. APPLY DEMO S/N AT AREA ON BOTTOM SIDE AS SHOWN ON SHEET 2.



## DETAIL "C" (5X), E6, E8, E9, E11, E25



9. THERE ARE 3 ASSEMBLY VERSIONS FOR THIS DESIGN: -A, -B AND -C.  
PLEASE SEE BILL OF MATERIALS TO MARK EACH VERSION  
CORRECTLY BY BLACK PERMANENT MARKER.

## \*ASSEMBLY OPTIONS TABLE

SKU #	# OF PHASES	DNP	SLAVE 1		SLAVE 2		SLAVE 3		IOUT
			R11	R12	R9	R10	R13	R14	
DC2874A-A	4	NONE	100k	301k	0	DNP	301k	100k	40A
DC2874A-B	3	SLAVE 3	174k	243k	243k	174k	DNP	DNP	30A
DC2874A-C	2	SLAVE 2&3	0	DNP	DNP	DNP	DNP	DNP	20A

APPROVALS		ANALOG DEVICES		POWER BY LITTE		FOR ADI CUSTOMER USE ONLY	
PCB DES	NC	TITLE: TOP ASSEMBLY DRAWING		5V, MULTI-PHASE SILENT SWITCHER 2		SIZE IC NO. LTC3310S	
APP ENG	MM						
		SCALE = NONE		REV. 05		SHT 1 OF 1	