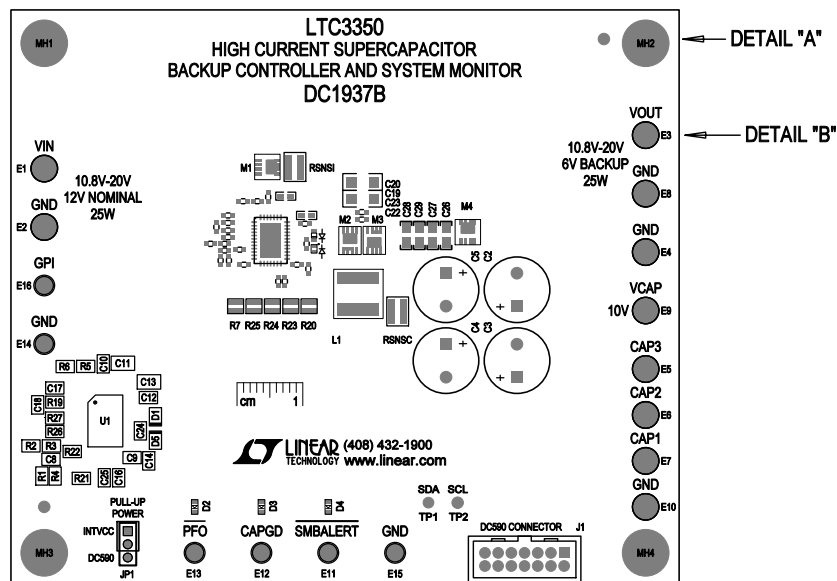
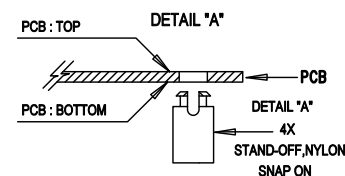


REVISION HISTORY				
ECO	REV	DESCRIPTION	APPR	DATE
-	3	PRODUCTION FAB	MM	05-04-15

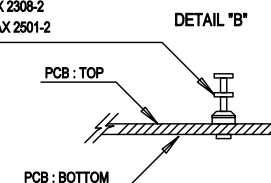


NOTES: UNLESS OTHERWISE SPECIFIED

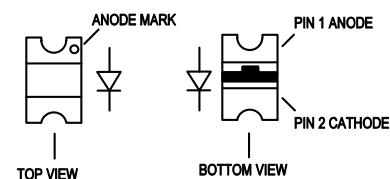
1. WORKMANSHIP SHALL BE IN ACCORDANCE WITH IPC-A-610.
2. ASSEMBLY REFLOW PROFILE SHALL BE IN ACCORDANCE WITH J-STD-020 WITH MAXIMUM SOLDER TEMPERATURE OF 250 DEGREES CELSIUS.
3. PARTS TO OMIT WILL BE SPECIFIED ON THE BILL OF MATERIALS
LOCATIONS OF OMITTED PARTS SHALL BE FREE OF SOLDER.
MASK THE SOLDER STENCIL WHERE SMT PARTS ARE OMITTED.
4. INSTALL SHUNTS AS SHOWN ON ASSY DRAWING.
5. DEPANLIZE BOARDS AFTER ASSEMBLY AND ROUTE-OUT THE BREAKOUT TABS ON FOUR SIDES OF THE BOARD EDGE.
6. APPLY ASSEMBLY STAMP OR QA STAMP TO BOTTOM OF BOARD (UNSHOWY AREA).
7. INSTALL TURRETS, STAND-OFFS AND BANANA JACKS AS SHOWN BELOW:




(6 PLCS) : MILL-MAX 2308-2
(10 PLCS) : MILL-MAX 2501-2



8. INSTALL LED'S D2, D3 AND D4 AS SHOWN:



APPROVALS		 <div> 1530 MCCARTHY BLVD MILPITAS, CA 95035 PH: (408)432-1800 www.Linear.com LTC CONFIDENTIAL - FOR CUSTOMER USE ONLY </div>	
PCB DES.	INC		
APP ENG.	MM	TITLE: TOP ASSEMBLY DRAWING:	
		HIGH CURRENT SUPERCAPACITOR BACKUP CONTROLLER AND SYSTEM MONITOR	
		SIZE	IC NO. LTC3350EUHF
		N/A	REV. 3
		FILENAME: DC1937B-3.PCB	SHT 1 of 2
SCALE = NONE			