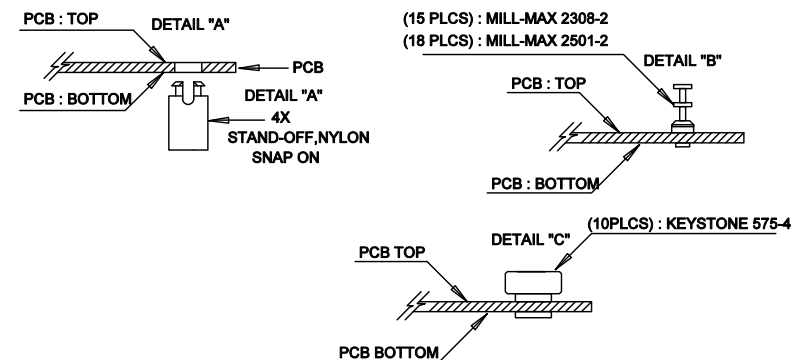


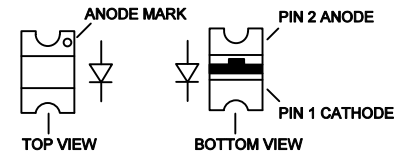
REVISION HISTORY				
ECO	REV	DESCRIPTION	APPR	DATE
-	01	PRODUCTION FAB	ZP	03-25-19

NOTES: UNLESS OTHERWISE SPECIFIED

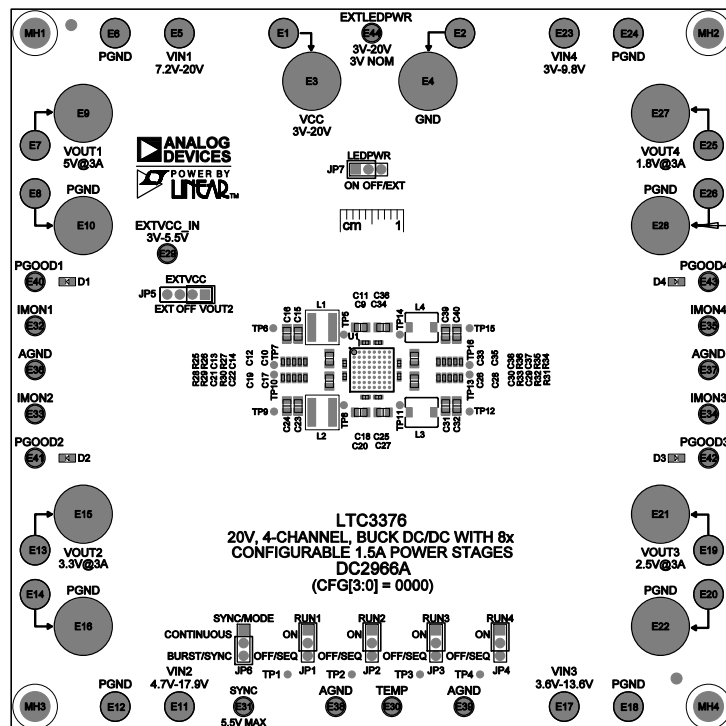
1. WORKMANSHIP SHALL BE IN ACCORDANCE WITH IPC-A-610, CLASS 2.
2. ASSEMBLY REFLOW PROFILE SHALL BE IN ACCORDANCE WITH J-STD-020 WITH MAXIMUM SOLDER TEMPERATURE OF 250 DEGREES CELSIUS.
3. PARTS TO OMIT WILL BE SPECIFIED ON THE BILL OF MATERIALS
LOCATIONS OF OMITTED PARTS SHALL BE FREE OF SOLDER.
MASK THE SOLDER STENCIL WHERE SMT PARTS ARE OMITTED.
4. INSTALL SHUNTS AS SHOWN ON ASSY DRAWING.
5. DEPANELIZE BOARDS AFTER ASSEMBLY AND ROUTE-OUT THE BREAKOUT TABS ON FOUR SIDES OF THE BOARD EDGE.
6. APPLY ASSEMBLY STAMP OR QA STAMP TO BOTTOM OF BOARD (UNSHOWY AREA).
7. INSTALL TURRETS, STAND-OFFS AND BANANA JACKS AS SHOWN BELOW:





8. INSTALL LED'S D1 - D4 AS SHOWN:



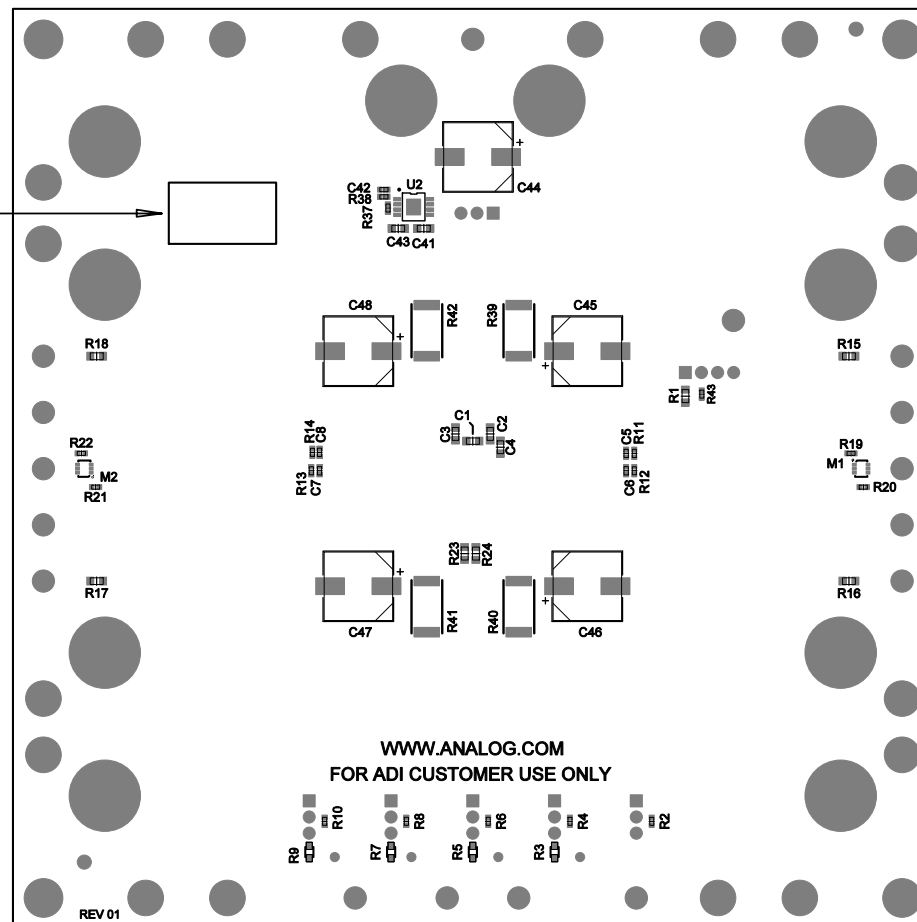
9. APPLY DEMO S/N AT AREA ON BOTTOM SIDE AS SHOWN ON SHEET 2.



APPROVALS		 ANALOG DEVICES		 POWER BY LINEAR		1630 MCCARTHY BLVD MILPITAS, CA 95035 www.Linear.com	
PCB DES.	NC	FOR ADI CUSTOMER USE ONLY					
APP ENG.	ZP	TITLE: TOP ASSEMBLY DRAWING: 20V, 4-CHANNEL, BUCK DC/DC WITH 8x CONFIGURABLE 1.5A POWER STAGES					
		SIZE	IC NO.	LTC3376		REV.	
		N/A		DEMO CIRCUIT 2966A		01	
SCALE = NONE		FILENAME:				SHT 1 of 2	

APPLY IN THIS AREA
DEMO S/N LABEL

9



APPROVALS

PCB DES.	NC
APP ENG.	ZP
SCALE = NONE	



1830 MCCARTHY BLVD
MILPITAS, CA 95035
www.linear.com

FOR ADI CUSTOMER USE ONLY

TITLE: BOTTOM ASSEMBLY DRAWING

20V, 4-CHANNEL, BUCK DC/DC WITH 8x
CONFIGURABLE 1.5A POWER STAGES

SIZE N/A	IC NO. LTC3376 DEMO CIRCUIT 2966A	REV 01
-------------	--------------------------------------	-----------

FILENAME: SHT 2 of 2