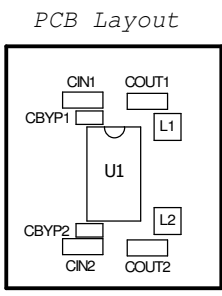
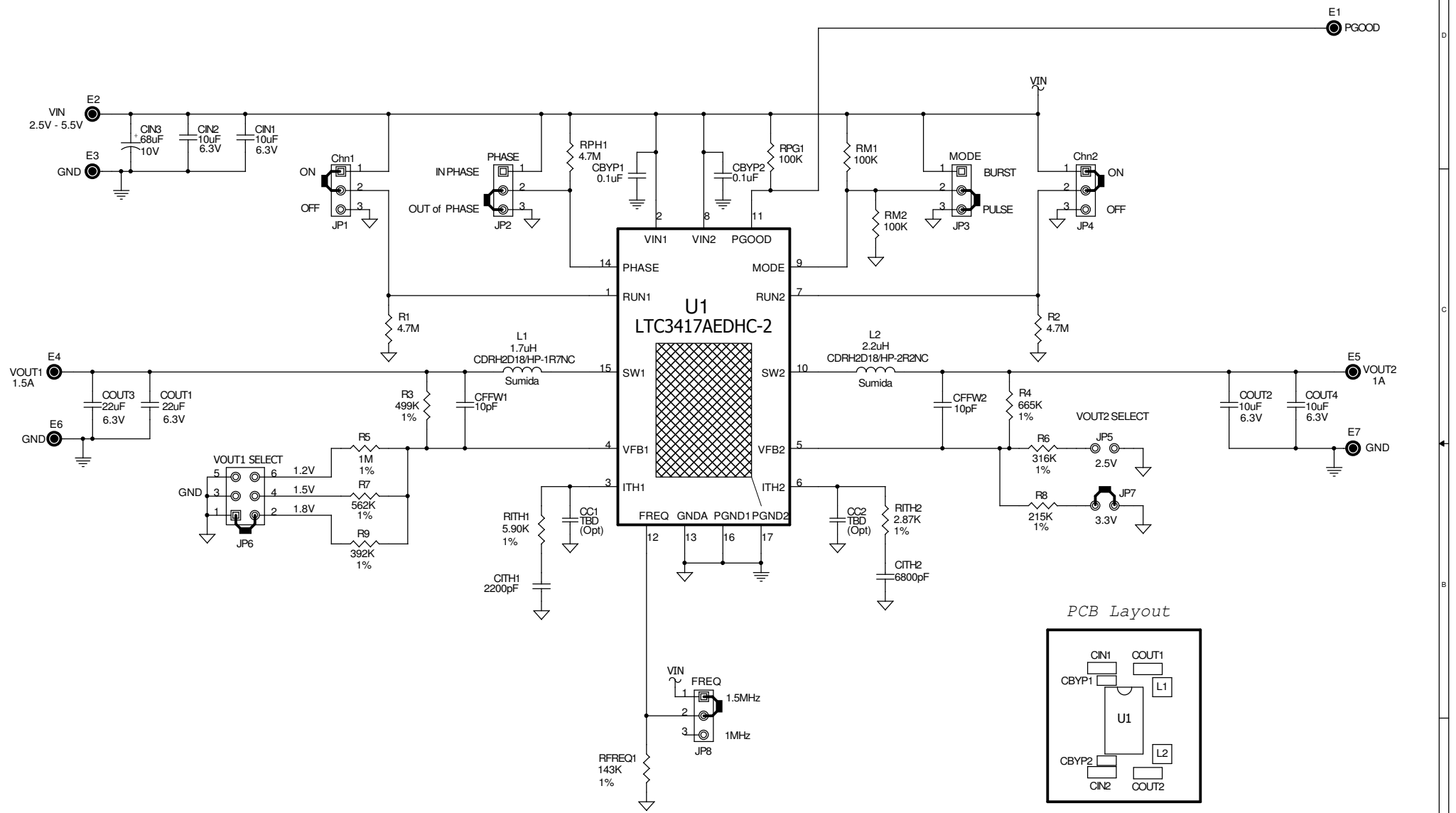


REVISION HISTORY				
ECO	REV	DESCRIPTION	DATE	APPROVED
	0	1st PROTOTYPE		



\* CIN3 is an optional capacitor. It is inserted on the DC1336A to dampen the (possible) ringing voltage due to the use of long input leads. On a normal, typical PCB, with short traces, CIN3 is not needed.

This circuit is proprietary to Linear Technology and supplied for use with Linear Technology parts.  
**Customer Notice:** Linear Technology has made a best effort to design a circuit that meets customer-supplied specifications; however, it remains the customers responsibility to verify proper and reliable operation in the actual application. Component substitution and printed circuit board layout may significantly affect circuit performance or reliability. Contact Linear Applications Engineering for assistance.

APPROVALS		LINEAR TECHNOLOGY CORPORATION	
DRAWN: Rudy Bautista		1630 McCARTHY BLVD MILPITAS, CA. 95035 (408)432-1900 (408)434-0507 (FAX)	
ENGINEER: Tom Gross		www.linear.com LTC Confidential - For Customer Use Only	
APPROVED:		Title: LTC3417AEDHC-2 Dual Synchronous Step-Down Regulator	
CHECKED:		SD	Document Number <b>DEMO CIRCUIT 1336A</b>
Date: Monday, August 25, 2008		C:\ORCADWIN\CAPTURE\1336A\1336A_REV0.DSN	Rev <b>0</b>
		Sheet 1 of 1	