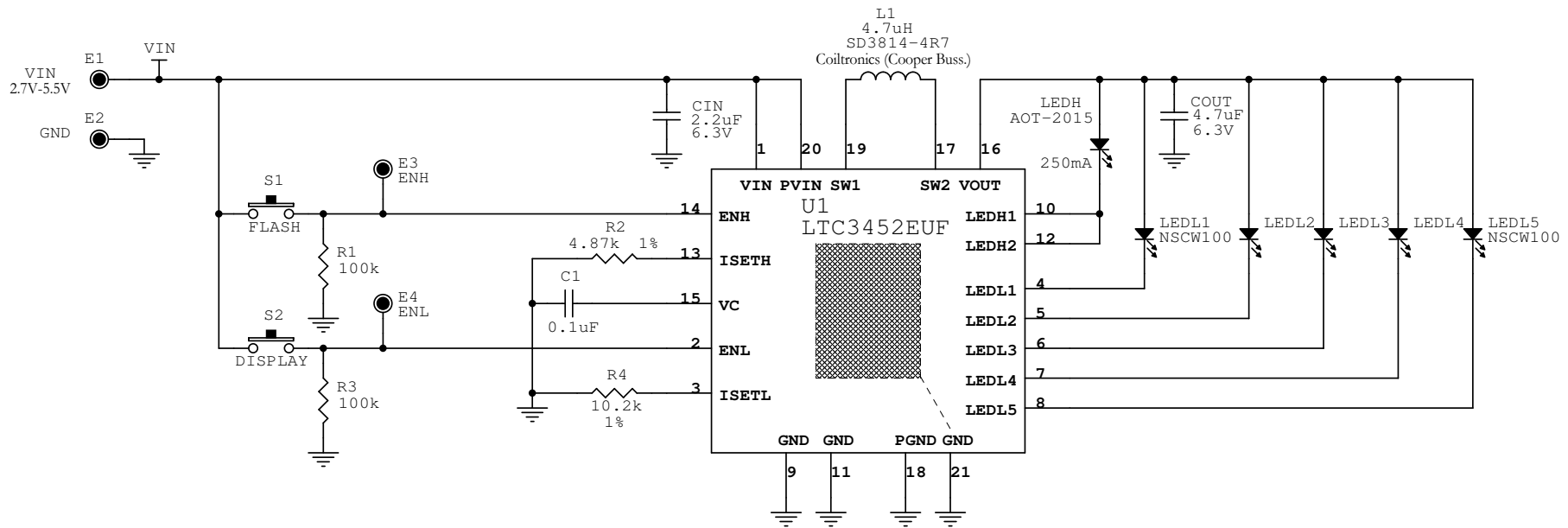


REVISION HISTORY				
ECO	REV	DESCRIPTION	DATE	APPROVED
	0	1st PROTOTYPE		



ENL PWM DUTY CYCLE	LEDL1-LEDL5 CURRENT
94%	20mA
81%	10mA
69%	5mA
56%	2.5mA
44%	1.25mA
31%	0.625mA
19%	0.312mA
6%	0.156mA

LEDH = 250mA

CUSTOMER NOTICE
 LINEAR TECHNOLOGY HAS MADE A BEST EFFORT TO DESIGN A CIRCUIT THAT MEETS CUSTOMER-SUPPLIED SPECIFICATIONS; HOWEVER, IT REMAINS THE CUSTOMER'S RESPONSIBILITY TO VERIFY PROPER AND RELIABLE OPERATION IN THE ACTUAL APPLICATION. COMPONENT SUBSTITUTION AND PRINTED CIRCUIT BOARD LAYOUT MAY SIGNIFICANTLY AFFECT CIRCUIT PERFORMANCE OR RELIABILITY. CONTACT LINEAR TECHNOLOGY APPLICATIONS ENGINEERING FOR ASSISTANCE.
 THIS CIRCUIT IS PROPRIETARY TO LINEAR TECHNOLOGY AND SUPPLIED FOR USE WITH LINEAR TECHNOLOGY PARTS.

CONTRACT NO.
 APPROVALS
 DRAWN: Rudy B
 CHECKED:
 APPROVED:
 ENGINEER: DAVID B.
 DESIGNER:

1630 McCarthy Blvd.
 Milpitas, CA 95035
 Phone: (408)432-1900
 Fax: (408)434-0507
 LTC Confidential-For Customer Use Only

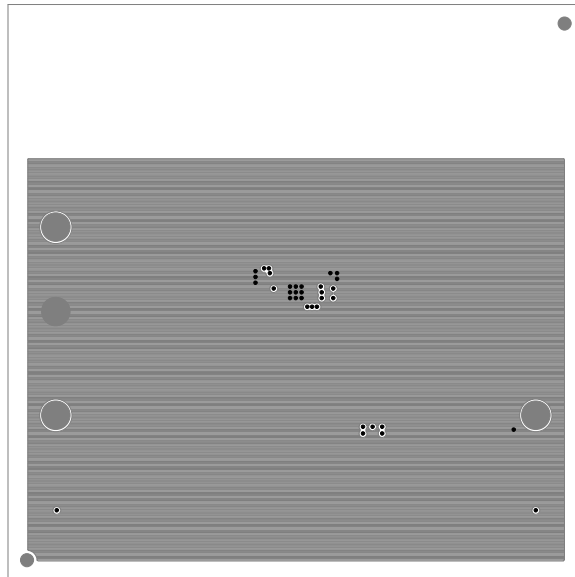
LINEAR TECHNOLOGY

TITLE: SCHEMATIC
 Synchronous Buck-Boost Main/Camera White LED Driver

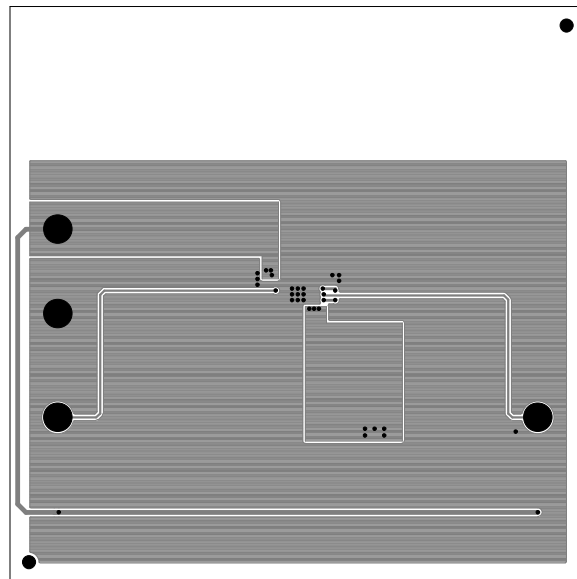
SIZE A DWG NO. DEMO CIRCUIT 928A REV 1

DATE: Wednesday, March 08, 2006 SHEET 1 OF 1

Linear Tech. Corp. Layer2
Demo Circuit 928A

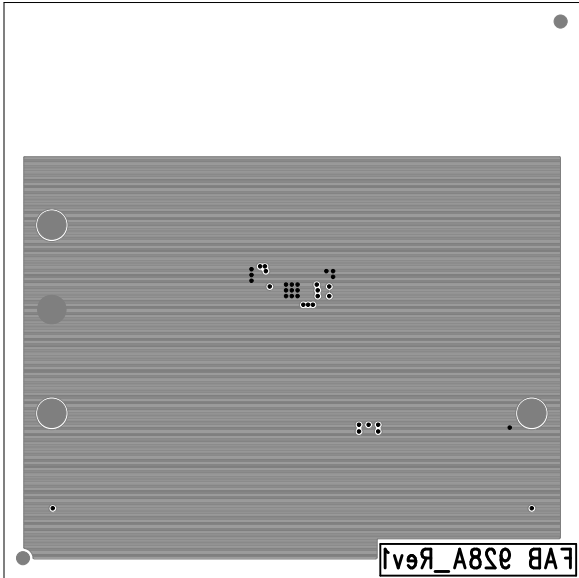


Linear Tech. Corp.
Demo Circuit 928A Layer3



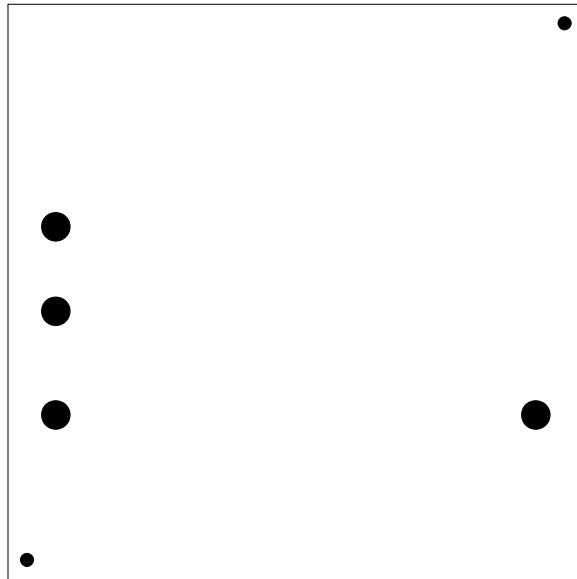
Linear Tech. Corp.
Demo Circuit 928A

Solder Side

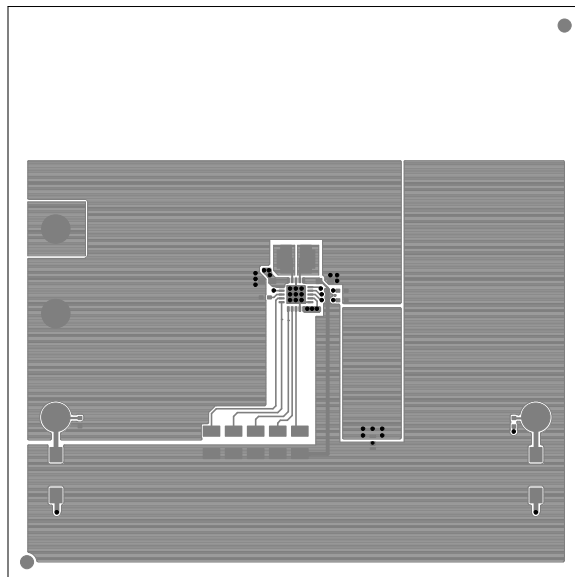


Linear Tech. Corp.
Demo Circuit 928A

SolderMask Bottom



Linear Tech. Corp.
Demo Circuit 928A
Component Side



Linear Tech. Corp.
 Demo Circuit 928A
 Component Side
 Silkscreen Top



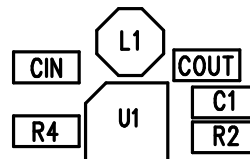
(408)432-1900
 www.linear.com

Demo Circuit 928A

Synchronous Buck-Boost

Main/Camera White LED Driver

LTC3452EUF



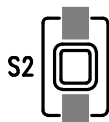
VIN
2.7V-5.5V



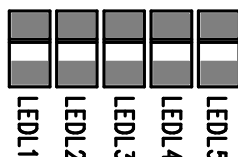
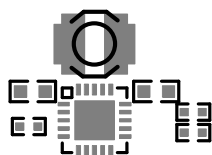
GND



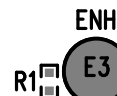
ENL



DISPLAY



LEDH = 250mA



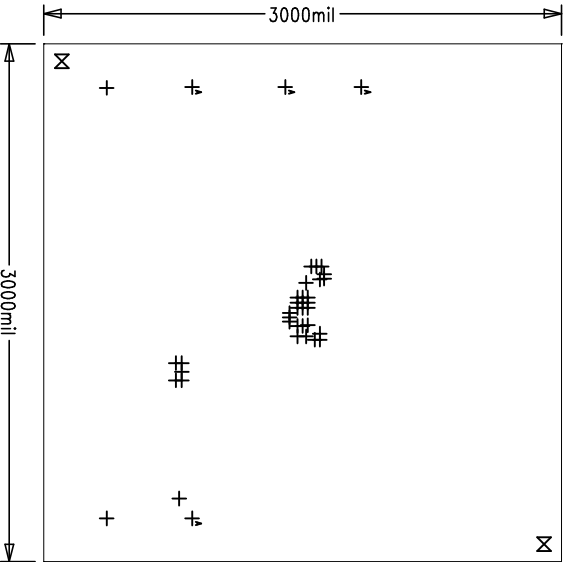
FLASH

ENL PWM DUTY CYCLE	LEDL1-LEDL5 CURRENT
94%	20mA
81%	10mA
69%	5mA
56%	2.5mA
44%	1.25mA
31%	0.625mA
19%	0.312mA
6%	0.156mA

LTC Confidential - For Customer Use Only

Assembly Drawing, Top

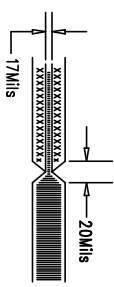
Linear Tech, Corp.
Demo Circuit 928A



SIZE	QTY	SYM	PLTD	TOL
10	35	+	YES	+/-3mil
94	4	⊞	YES	+/-3mil
70	2	⊞	NO	+/-3mil

REVISIONS		
REV	APPR	DATE

- NOTES: UNLESS OTHERWISE SPECIFIED,**
- 1. ARTWORK P/N DEMO CIRCUIT 928A , 4-LAYER
 - 2. FAB PER IPC-A-600
 - 3. MATERIAL: EPOXY FIBERGLASS, NEMA GRADE FR-4
.062 +/- .005 INCH THICKNESS WITH 2 OZ. COPPER FINISH ON TWO OUTER LAYERS AND 1 OZ. COPPER ON TWO INTERNAL LAYERS.
FLAMABILITY RATING: 94 V-2 MINIMUM .
 - 4. SIZE: CUT TO DIMENSIONS AND TOLERANCES SHOWN.
0.00 ARE PRIMARY DATUMS.
 - 5. BOARD: SELECTIVE PLATED BOARD, SOLDER MASK OVER BARE COPPER, COLOR, GREEN LPI, WHITE TIN IMMERSION (OMIKRON) BOTH SIDES, SILKSCREEN COMPONENT SIDE WITH WHITE NON-CONDUCTIVE INK.
PLATE THRU ALL HOLES WITH COPPER
MIN. PLATING THICKNESS: 1 OZ. EXCEPT WHERE PLATING NOT REQUIRED
 - 6. DRILL: ALL HOLES SHALL BE DRILLED +/-3MIL WITH RESPECT TO CTR. OF DRILLED PAD. ALL HOLES FINISHED SIZE AFTER PLATING.
 - 7. DROP ALL UNUSED PADS ON INNER LAYERS.
 - 8. DO NOT ALTER ARTWORK e.g. TO ADD LOGO OR DATE CODE.
 - 9. SCORING:



Fabrication Drawing

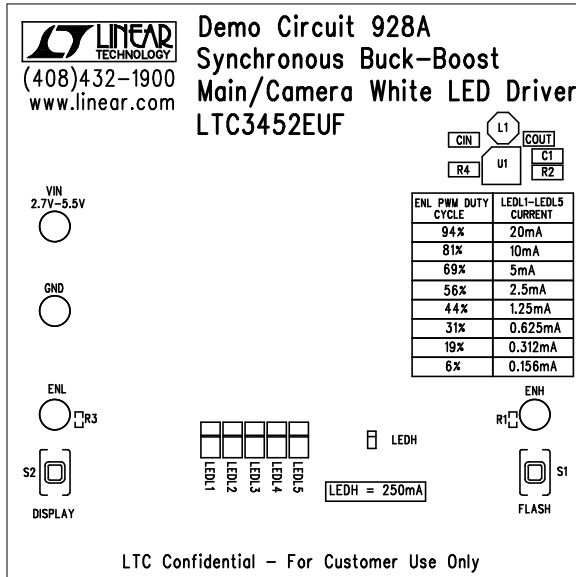
APPROVALS		
DRAWN	INT	DATE
CHECK		
DESIGN	Rmb	
ENGR	DavidDB	

TITLE: Synchronous Buck-Boost Main/Comero White LED Driver	
SIZE: NONE	REV: 1
SCALE = NONE	DEMO CIRCUIT 928A
SH1 1 of 1	

LINEAR TECHNOLOGY	1630 McCarthy Blvd. Milpitas, CA 95035 PH: (408)437-1900
--------------------------	--

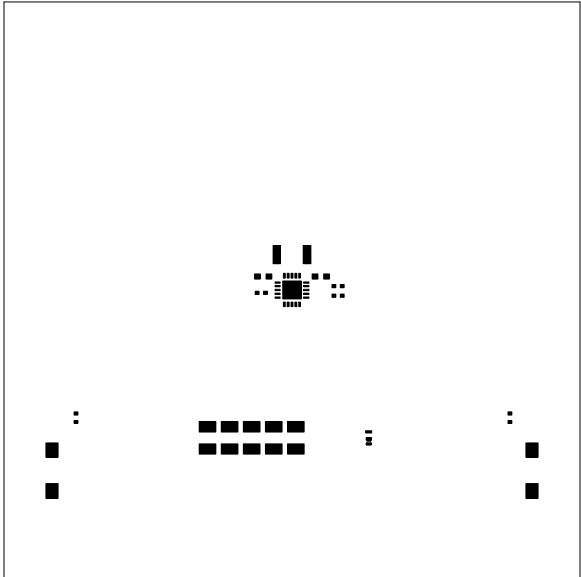
Linear Tech. Corp.
Demo Circuit 928A

Silkscreen Top



Linear Tech. Corp.
Demo Circuit 928A

PasteMask Top



Linear Tech. Corp.
Demo Circuit 928A

SolderMask Top

