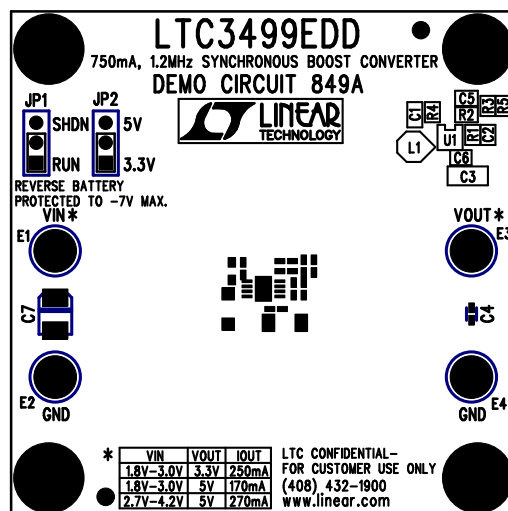


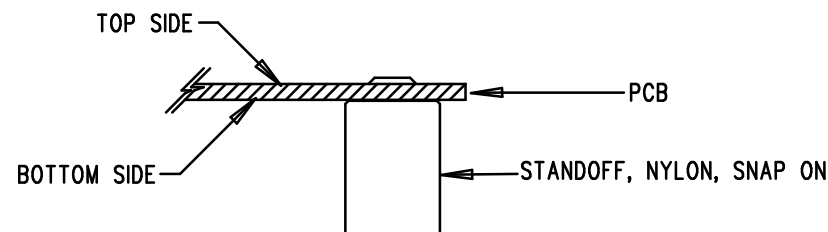
REVISIONS			
REV	DESCRIPTION	APPR	DATE
A-1	FINAL FABRICATION	JR	01-16-06



TOP SILKSCREEN
LINEAR TECHNOLOGY
DC849A-1 * LTC3499EDD
750mA, 1.2MHz SYNCHRONOUS BOOST CONVERTER
DATE: 01-16-06

NOTES: UNLESS OTHERWISE SPECIFIED

1. WORKMANSHIP SHALL BE IN ACCORDANCE WITH IPC-A-610.
2. INSTALL SHUNT ON JP1 AND JP2 PIN 1 AND 2.
3. PARTS TO OMIT WILL BE SPECIFIED ON THE BILLS OF MATERIAL. LOCATIONS OF OMITTED PARTS SHALL BE FREE OF SOLDER. MASK THE SOLDER STENCIL WHERE SMT PARTS ARE OMITTED.
4. DEPANELIZE BOARDS AFTER ASSEMBLY AND ROUTE-OUT THE BREAKOUT TABS ON FOUR SIDES OF THE BOARD EDGE.
5. ASSY PROCESSES SHALL INCLUDE: REFLOW SOLDER TOP SIDE SMD.
6. INSTALL 4 STANDOFFS AT 4 CORNERS AS SHOWN BELOW:



APPROVALS

	INIT	DATE
DRAWN		
CHECK		
DESIGN	KIM T.	01-16-06
ENGR	JESUS R.	01-16-06

SCALE = NONE



1630 MCCATHY BLVD
MILPITAS, CA 95035
PH: (408)432-1900
LTC CONFIDENTIAL-
FOR CUSTOMER USE ONLY

TITLE: TOP ASSEMBLY DRAWING

750mA, 1.2MHz SYNCHRONOUS BOOST CONVERTER

SIZE	DEMO	REV.
A	DC849A-1 * LTC3499EDD	A-1

SHT 1 of 1