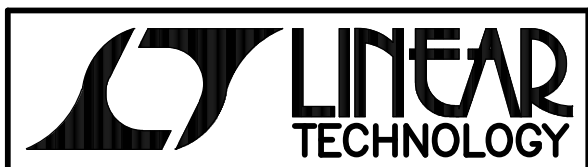


INSTALL SHUNT: JP1-2&3.



(408) 432-1900

www.linear.com

LTC3531ES6-3.3 DEMO CIRCUIT 877A BUCK-BOOST REGULATOR

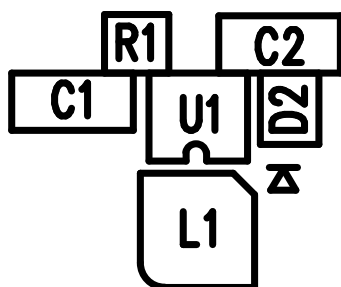
IOUT(MAX)(mA)	VIN(Volts)
90	1.8
150	2.5
200	2.9



RUN SHDN



1.8V-5.5V



3.3V



LTC CONFIDENTIAL -
FOR CUSTOMER USE ONLY

LINEAR TECHNOLOGY CORPORATION

DC877A REV 2

TOP SILKSCREEN

08/18/05