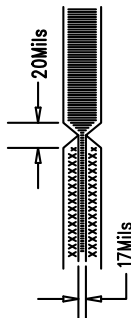



REV	APPR	DATE
-----	------	------

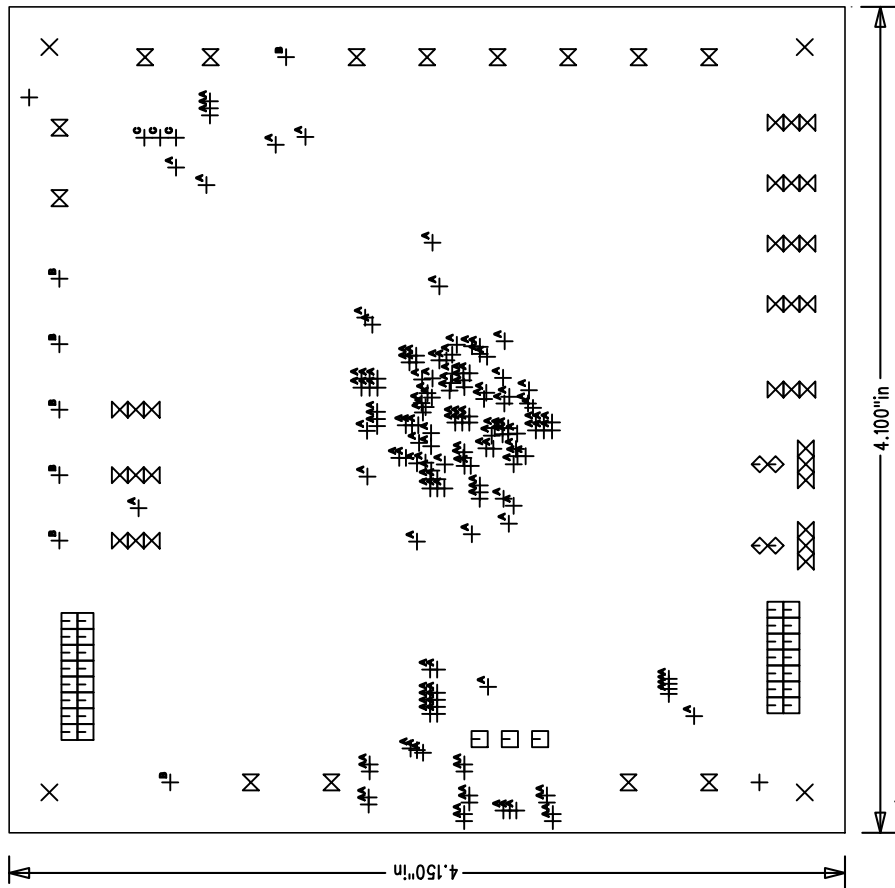
NOTES: UNLESS OTHERWISE SPECIFIED:

- ARTWORK P/N DEMO CIRCUIT 1577A
 - FAB PER IPC-A-600. 4-Layers.
 - MATERIAL: EPOXY FIBERGLASS, NEMA GRADE FR-4 .062 +/- .005 INCH THICKNESS WITH 2 OZ. COPPER FINISH ON TWO OUTER LAYERS AND 1 OZ. COPPER ON TWO INTERNAL LAYERS. FLAMMABILITY RATING: 94 V-2 MINIMUM .
 - SIZE: CUT TO DIMENSIONS AND TOLERANCES SHOWN.
 - BOARD: SELECTIVE PLATED BOARD. SOLDER MASK OVER BARE COPPER, COLOR, GREEN LPI. GOLD IMMERSION (ENG) BOTH SIDES. SILKSCREEN BOTH SIDES WITH WHITE NON-CONDUCTIVE INK.
 - DRILL: ALL HOLES SHALL BE DRILLED +/- .003 INCH WITH RESPECT TO CTR. OF DRILLED PAD. ALL HOLES FINISHED SIZE AFTER PLATING.
 - DO NOT ALTER ARTWORK e.g. TO ADD LOGO, DATE CODE OR ELECTRICAL TEST STAMP, BUT YOU MAY MODIFY PAD SIZE TO MEET END FINISH.
 - SCORING FOR PANELIZED PCB: "PRODUCTION RUN ONLY"
-
- The diagram illustrates a panelized PCB layout. It shows a central rectangular panel with a width of 17Mils. This panel is flanked by two side sections, each with a width of 20Mils. The central panel is filled with a cross-hatched pattern, while the side sections are white. A vertical line with arrows at both ends, labeled '20Mils', indicates the width of the side sections. A horizontal line with arrows at both ends, labeled '17Mils', indicates the width of the central panel. The entire assembly is shown within a rectangular frame.
- DO NOT ALTER SOLDER MASK MAINTAIN .0018" OVERSIZE ON SMT PADS. A .005" WEBBING IS REQUIRED BETWEEN SMD PADS.
 - PCB'S ARE TO BE ROHS COMPLIANT.



Fabrication Drawing

APPROVALS				1630 McCarthy Blvd. Milpitas, CA 95035 PH: (408)432-1900	
		INIT	DATE		
DRAWN		NJC			
CHECK					
DESIGN		NJC			
ENGR		GB			
		TITLE:		LTC3576EUF-1	
				Switching Power Manager + USB On-The-Go	
				OVP + HV Buck VC Control + 3 Bucks	
SIZE		NONE		DC1577A	REV. A
SCALE = NONE		DES-23xxxx		SHT 1 of 1	



SIZE	QTY	SYM	PLAYED	TOL
0.072	2	+	NO	+/-0.0
0.187	4	X	YES	+/-0.0
0.305	33	□	YES	+/-0.0
0.403	4	◇	YES	+/-0.0
0.631	30	⊗	YES	+/-0.0
0.694	14	⊗	YES	+/-0.0
0.901	148	⊖	YES	+/-0.0
0.963	7	⊖	YES	+/-0.0
0.931	3	⊖	YES	+/-0.0

Fabrication Drawing

Linear Tech. Corp.
Demo Circuit 1577A