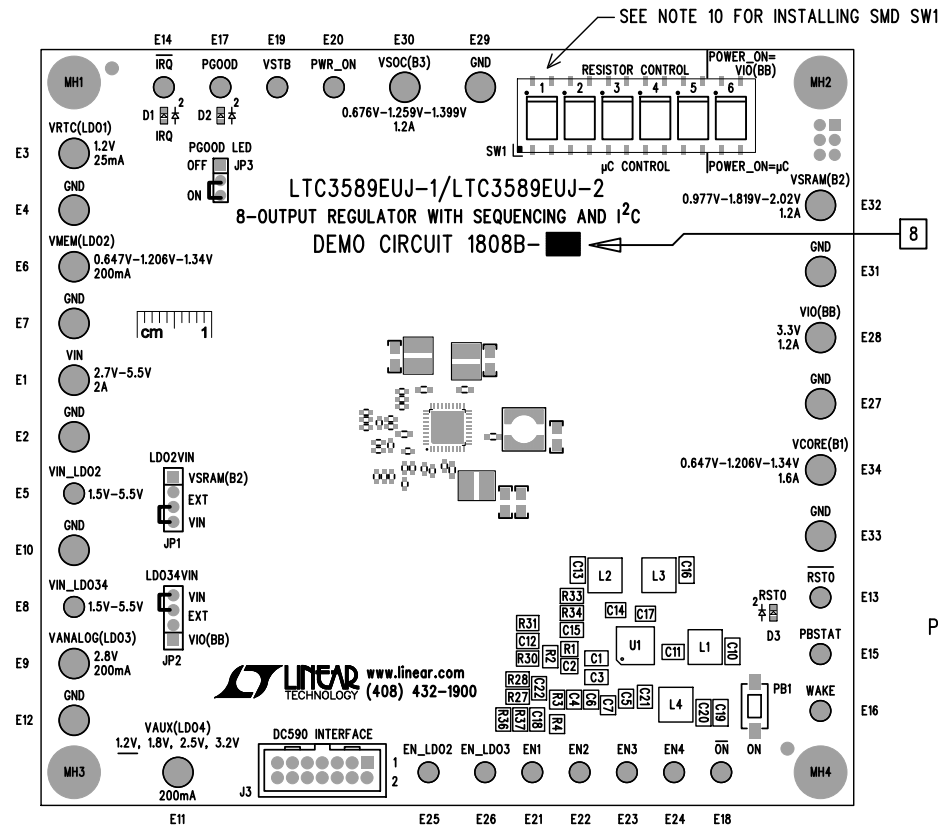


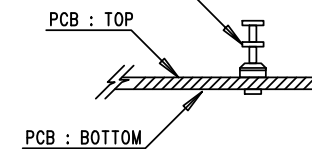
REVISION HISTORY				
ECO	REV	DESCRIPTION	APPR	DATE
-	1	PRODUCTION FAB	GEORGE B.	04-05-12



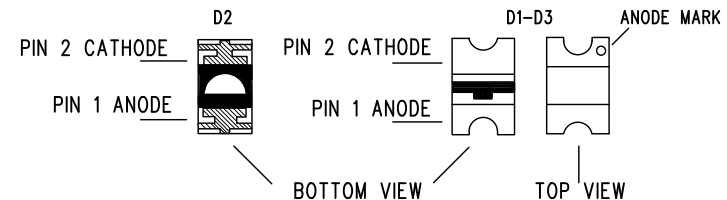
NOTES: UNLESS OTHERWISE SPECIFIED

- WORKMANSHIP SHALL BE IN ACCORDANCE WITH IPC-A-610.
- ASSEMBLY PROCESS SHALL INCLUDE: REFLOW SOLDER TOP SIDE SMD. MAXIMUM SOLDER TEMPERATURE IS 240 DEGREES CELSIUS.
- PARTS TO OMIT WILL BE SPECIFIED ON THE BILL OF MATERIALS. LOCATIONS OF OMITTED PARTS SHALL BE FREE OF SOLDER. MASK THE SOLDER STENCIL WHERE SMT PARTS ARE OMITTED.
- INSTALL SHUNTS AS SHOWN ON ASSY DRAWING.
- DEPANELIZE BOARDS AFTER ASSEMBLY AND ROUTE-OUT THE BREAKOUT TABS ON FOUR SIDES OF THE BOARD EDGE.
- INSTALL TURRETS AS SHOWN BELOW:

(18 PLCS) : MILL-MAX 2501-2; (16 PLCS) : MILL-MAX 2308-2



- INSTALL LED'S D1, D2 AND D3 AS SHOWN BELOW:

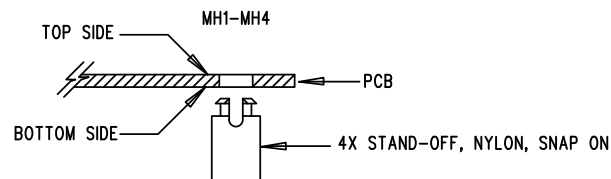


- THERE ARE TWO ASSEMBLY VERSIONS FOR THIS DESIGN: -A AND -B PLEASE SEE BILL OF MATERIALS AND TABLE BELOW TO MARK EACH VERSION CORRECTLY BY BLACK PERMANENT MARKER.

*

ASSY	U1
-A	LTC3589EUJ-1
-B	LTC3589EUJ-2

- INSTALL 4 STANDOFFS AT 4 LOCATIONS SHOWN BELOW:



- SMD SWITCH SW1 SHALL BE INSTALLED AFTER BOARDS ARE WASHED.

APPROVALS			
PCB DES.	NC		
APP ENG.	GEORGE B.	1630 MCCARTHY BLVD MILPITAS, CA 95035 PH: (408)432-1900 www.Linear.com LTC CONFIDENTIAL- FOR CUSTOMER USE ONLY	
		TITLE: TOP ASSEMBLY DRAWING:	
		8-OUTPUT REGULATOR WITH SEQUENCING AND I ² C	
		SIZE N/A	REV. 1
		IC NO. LTC3589EUJ-1/LTC3589EUJ-2	
		DEMO CIRCUIT 1808B-A/B	
SCALE = NONE		FILENAME: DC1808B-1-A/B.PCB	SHT 1 of 2