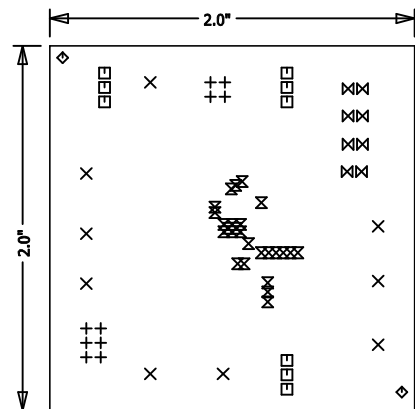


REVISION HISTORY				
ECO	REV	DESCRIPTION	APPR	DATE
1	1	PRODUCTION	TOM G.	11-23-09



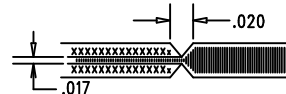
FAB Drawing

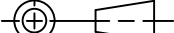
LINEAR TECHNOLOGY  
 DC1611A-LTC3604EMSE  
 2.5A MONOLITHIC SYNCHRONOUS  
 BUCK REGULATOR  
 DATE: 11-23-09

SIZE	QTY	SYM	PLATED	TOL
0.034	10	+	YES	+/-0.003
0.094	9	X	YES	+/-0.003
0.031	9	□	YES	+/-0.003
0.07	2	◇	NO	+/-0.003
0.008	26	⊗	YES	+/-0.003
0.026	8	⊗	YES	+/-0.003

## NOTES: UNLESS OTHERWISE SPECIFIED

- FAB PER IPC-A-600.
- MATERIAL: -EPOXY FIBERGLASS, NEMA GRADE FR-4  
-FINISHED THICKNESS TO BE 0.062" +/- .005"  
-TOTAL OF 4 LAYERS WITH 2 OZ. CU ON THE OUTER LAYERS  
AND 1 OZ. CU ON THE INNER LAYERS.  
-FLAMMABILITY RATING: 94 V-0 MINIMUM.
- SIZE: CUT TO DIMENSIONS AND TOLERANCES SHOWN.
- DRILLING: -DRILL HOLES PER SCHEDULE. PLATE THROUGH HOLES WITH COPPER, 0.001" THICK MIN.  
-ALL HOLE SIZES ARE SPECIFIED AFTER PLATING.  
-HOLE LOCATION TOLERANCES ARE +/-0.003" IN RELATION TO CENTER
- FINISH: -SMOBC USING LPI BOTH SIDES, COLOR GREEN.  
-GOLD IMMERSION BOTH SIDES.  
(LEAD FREE SOLDER CAN BE USED FOR PROTOTYPE)  
-FOR SILKSCREEN: BOTH SIDES USE WHITE NON-CONDUCTIVE INK.
- DO NOT ALTER ARTWORK e.g. TO ADD LOGO OR DATE CODE.  
PAD SIZE CAN BE MODIFIED TO MEET END FINISH.
- PCBS ARE TO BE RoHS COMPLIANT.
- SCORING FOR PANELIZED PCB:



UNLESS OTHERWISE SPECIFIED DIMENSIONS ARE IN INCHES TOLERANCES ON ANGLE ±1° 0.XX" = ±0.01" 0.XXX" = ±0.005" INTERPRET DIM AND TOL PER ASME Y14.5M-1994 THIRD ANGLE PROJECTION 	APPROVALS			1630 MCCARTHY BLVD MILPITAS, CA 95035 PH: (408)432-1900 LTC CONFIDENTIAL- FOR CUSTOMER USE ONLY		
		INIT	DATE			
	PCB DES.	ANTONINA K.	11-23-09	TECHNOLOGY  TITLE: FABRICATION DRAWING 2.5A MONOLITHIC SYNCHRONOUS BUCK REGULATOR		
	ENG.	TOM G.	11-23-09			
	SIZE	IC NO.	LTC3604EMSE	REV.	1	
	A		DEMO CIRCUIT 1611A			
DO NOT SCALE DRAWING	SCALE: NONE			FILENAME: DC1611A-1.PCB	SHT 1 of 1	

PCB DES. ANTONINA K. 11-23-09 ENG. TOM G. 11-23-09			REV. 1	
			DEMO CIRCUIT 1611A	