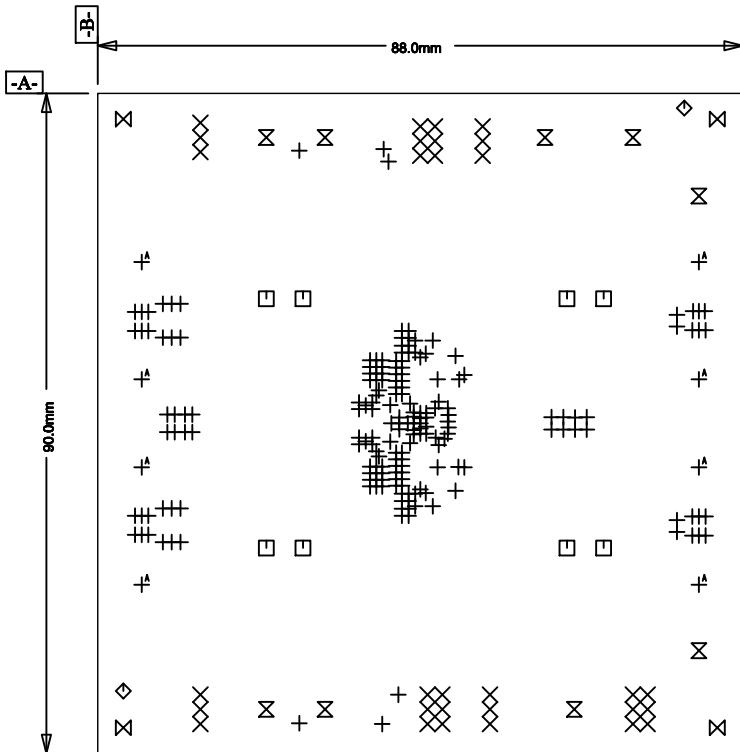


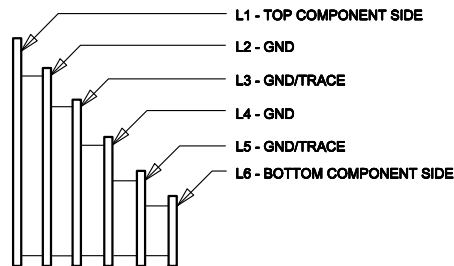


LTC CONFIDENTIAL - For Customer Use Only



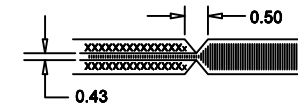
TOP COMPONENT SIDE SHOWN

LAYER CONSTRUCTION



NOTES: UNLESS OTHERWISE SPECIFIED,

- ARTWORK P/N DC2335A REV 4.
- FAB PER IPC-A-600
- PCB SHALL MEET RoHS COMPLIANCE.
- MATERIAL:
 - LAMINATE: EPOXY FIBERGLASS, NEMA GRADE FR-4
FLAMMABILITY RATING: 94 V-2 MINIMUM .
 - THICKNESS: 1.6 +/- 0.1 mm
 - CLAD: 2 OZ. (50um) EXTERNAL LAYERS.
1 OZ. (25um) COPPER ON ALL INTERNAL LAYERS.
- FINISH:
 - COATING: SOLDERMASK OVER BARE COPPER,
COLOR, GREEN LPI.
 - PLATING: GOLD IMMERSION BOTH SIDES.
 - SILKSCREEN: BOTH SIDE WITH WHITE
NON-CONDUCTIVE INK.
- TOLERANCES:
 - WARPAGE: (0.127mm) MAX. ALONG THE LONGEST DIAG.
AS PER IPC-TM650 METHOD 2.4.22.
 - ETCHING: +0.03mm, -0.3mm OF MASTER PATTERN.
 - REGISTRATION: 0.075mm MAX.
 - MASK THICKNESS: 0.025mm MIN., 0.075mm MAX.
 - HOLE PLATING: 22um +/- 3um.
- SIZE:
 - CUT TO DIMENSIONS AND TOLERANCES SHOWN.
0.00 ARE PRIMARY DATUMS.
- HOLE DIAMETERS ARE POST-PLATED SIZES.
- DEBURR AND BREAK ALL SHARP EDGES.
- DO NOT ALTER ARTWORK e.g. TO ADD LOGO OR DATE CODE.
- PLUG ALL VIA'S WITH NON-CONDUCTIVE EPOXY AND
PLATE OVER. PLANARIZE FINAL SURFACE.
- SCORING:



SIZE	QTY	SYM	PLATED	TOL
0.25	191	+	YES	+/-0.08
0.9	30	X	YES	+/-0.08
1.1	8	□	YES	+/-0.13
1.8	2	◇	NO	+/-0.13
2.41	9	⊗	YES	+/-0.13
4.75	4	⊗	NO	+/-0.13
5.21	8	⊕	YES	+/-0.13

<p>UNLESS OTHERWISE SPECIFIED DIMENSIONS ARE IN MILLIMETERS TOLERANCES ON ANGLE ± 1°</p> <p>XX ± 0.25 XXX ± 0.127</p> <p>THIRD ANGLE PROJECTION</p> <p>DO NOT SCALE DRAWING</p>	CONTRACT NO.		<p>1630 McCarthy Blvd. Milpitas, CA 95035</p> <p>Phone: (408)432-1900 Fax: (408)434-0507</p>			
	APPROVALS				DATE	
	DRAWN	10/22/14		TITLE FAB, LTC3636EUFD, 20VIN, DUAL 6A SYNCHRONOUS STEP - DOWN REGULATOR		
	CHECKED					
APPROVED	10/19/16		SIZE A	CAGE CODE	DWG NO. DC2335A	REV 4
DESIGNED BY			SCALE 1/1	FILENAME: 2335A-3.PCB	SHEET 1 OF 1	

