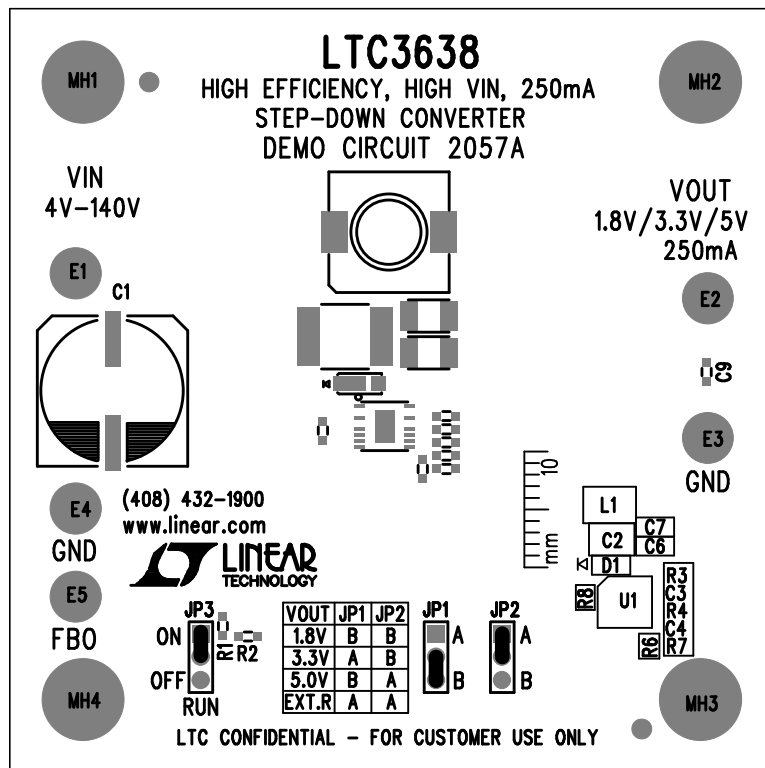


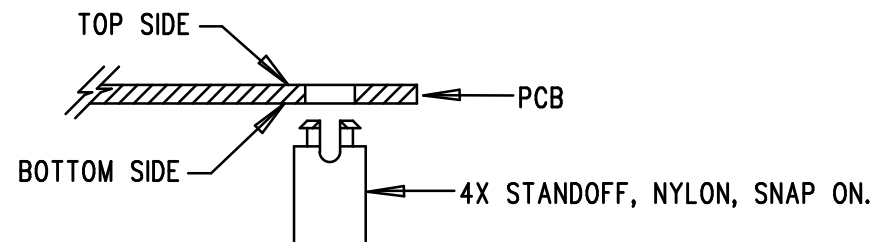
# REVISION HISTORY

ECO	REV	DESCRIPTION	APP. ENG.	DATE
	2	PRODUCTION	CHARLIE Z.	12-13-13



## NOTES: UNLESS OTHERWISE SPECIFIED

1. WORKMANSHIP SHALL BE IN ACCORDANCE WITH IPC-A-610.
2. ASSEMBLY PROCESS SHALL INCLUDE: REFLOW SOLDER TOP SIDE SMD. MAXIMUM SOLDER TEMPERATURE IS 240 DEGREES CELSIUS.
3. PARTS TO OMIT WILL BE SPECIFIED ON THE BILL OF MATERIALS. LOCATIONS OF OMITTED PARTS SHALL BE FREE OF SOLDER. MASK THE SOLDER STENCIL WHERE SMT PARTS ARE OMITTED.
4. INSTALL SHUNTS AS SHOWN ON ASSY DRAWING.
5. DEPANELIZE BOARDS AFTER ASSEMBLY AND ROUTE-OUT THE BREAKOUT TABS ON FOUR SIDES OF THE BOARD EDGE.
6. DO NOT APPLY ANY KIND OF ASSEMBLY STAMP OR QA STAMP TO ANY BOARD.
7. INSTALL 4 STANDOFFS AT LOCATIONS AS SHOWN BELOW:



## APPROVALS

PCB DES.	LT
APP ENG.	CHARLIE Z.

SCALE = NONE



1630 MCCARTHY BLVD  
MILPITAS, CA 95035  
PH: (408)432-1900  
www.linear.com  
LTC CONFIDENTIAL-  
FOR CUSTOMER USE ONLY

TITLE: TOP ASSEMBLY DRAWING

HIGH EFFICIENCY, HIGH VIN, 250mA  
STEP-DOWN CONVERTER

SIZE N/A	IC NO. LTC3638EMSE DEMO CIRCUIT 2057A	REV. 2
-------------	--	-----------

FILENAME: DC2057A-2.PCB

SHT 1 OF 2