

**LINEAR**  
TECHNOLOGY  
www.linear.com  
(408) 432-1900

SVIN

JP1  
ON  
OFF  
RUN

JP5  
VOUT  
GND  
EXTVCC  
EXTVCC

EXTVCC

GND

INTVCC

VIN \*

GND

# LTC3646EMSE- DEMO CIRCUIT 1820A-

GND

PGOOD

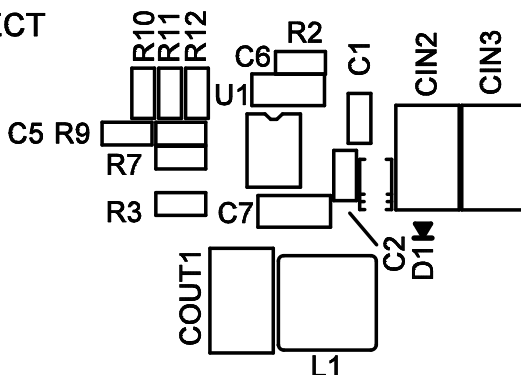
SYNC

MODE / SYNC

BURST  
SYNC  
FCC  
JP2

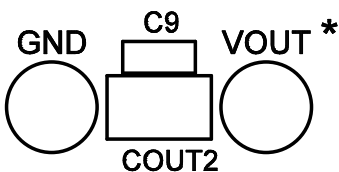
VOUT SELECT

3.3V  
5V  
JP3



mm  
10

HIGH EFFICIENCY LOW QUIESCENT  
CURRENT STEP-DOWN CONVERTER



VIN	VOUT
4.5V-40V	3.3V/1A
7V-40V	5V/1A

LTC CONFIDENTIAL -  
FOR CUSTOMER USE ONLY

**LINEAR TECHNOLOGY CORPORATION**

1820A REV 4  
09/21/12

TOP SILKSCREEN