

LTC3646/LTC3646-1 High Efficiency Low Quiescent Current Step-Down Converter

DESCRIPTION

Demonstration circuit 1820A-A/1820A-B is a step-down DC/DC converter using [LTC3646/LTC3646-1](#) monolithic synchronous buck regulator. The input voltage range is from 4V to 40V. The output voltage range of LTC3646 is 2V to 30V, for LTC3646-1 is 0.6V to 15V. It can deliver up to 1A of output current. At light load conditions, DC1820A can operate in Burst Mode[®] operation to improve the efficiency. The user can choose to use internal or external compensation. The switching frequency of LTC3646/

LTC3646-1 is programmable from 200kHz to 3MHz. It can be synchronized to an external clock through the MODE/SYNC pin. The LTC3646/LTC3646-1 data sheet must be read in conjunction with this demo manual prior to working on or modifying demonstration circuit 1820A.

Design files for this circuit board are available at <http://www.linear.com/demo/DC1820A-A>

All registered trademarks and trademarks are the property of their respective owners.

PERFORMANCE SUMMARY Specifications are at $T_A = 25^\circ\text{C}$

PARAMETER	CONDITIONS/NOTES	VALUE
Input Voltage Range		4V to 40V
Output Voltage V_{OUT}	Jumper Selectable	3.3V, 5V
Maximum Continuous Output Current		1A
Default Operating Frequency		1.5MHz
Efficiency	$V_{IN} = 12\text{V}, V_{OUT} = 5\text{V}, I_{OUT} = 1\text{A}$	91.0% See Figure 3
Load Transient	$V_{IN} = 12\text{V}, V_{OUT} = 5\text{V}$	See Figure 4

DEMO MANUAL

DC1820A-A/DC1820A-B

QUICK START PROCEDURE

Demonstration circuit 1820A is an easy way to evaluate the performance of the LTC3646/LTC3646-1. Please refer to Figure 1 for proper measurement equipment setup and follow the procedure below:

1. Place jumpers in the following positions for a typical application:

MODE	EXTVCC	RUN	V _{OUT} SELECT
FCC	GND	ON	3.3V

2. With power off, connect the input power supply, load and meters as shown in Figure 1. Preset the load to 0A and V_{IN} supply to be 0V.

3. Turn on the power at the input. Increase V_{IN} to 12V (**Do not hot-plug the input supply or apply more than the rated maximum voltage of 40V to the board or the part may be damaged**). The output voltage should be regulated and deliver the selected output voltage ±2%.
4. Vary the input voltage from 4V to 40V and adjust the load current from 0A to 1A. Observe the output voltage regulation, ripple voltage, efficiency, and other parameters.
5. To measure input or output ripple, please refer to Figure 2 for proper measurement setup.

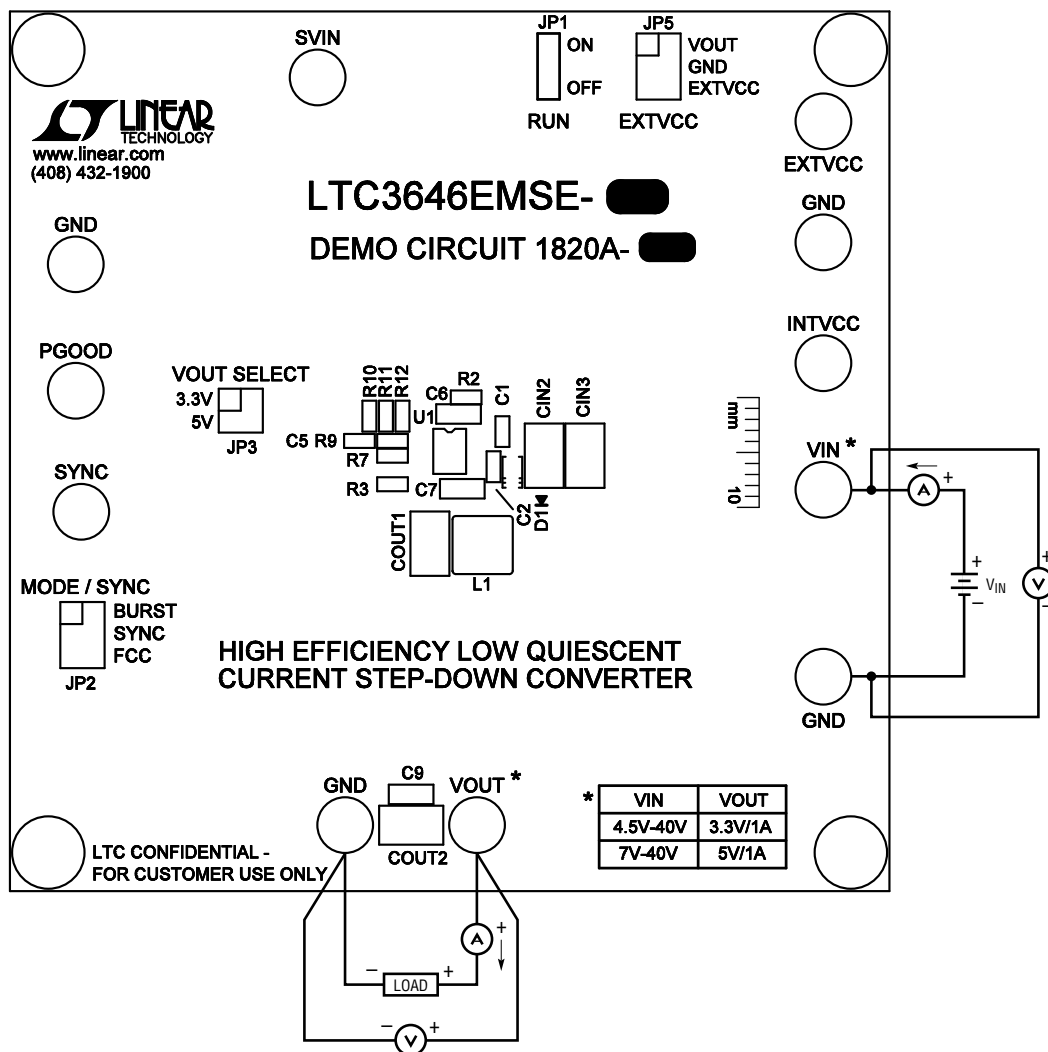


Figure 1. Proper Measurement Equipment Setup

QUICK START PROCEDURE

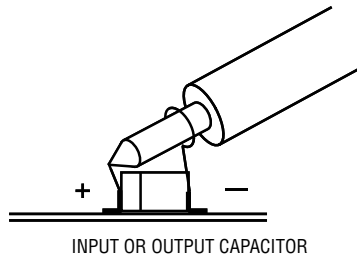
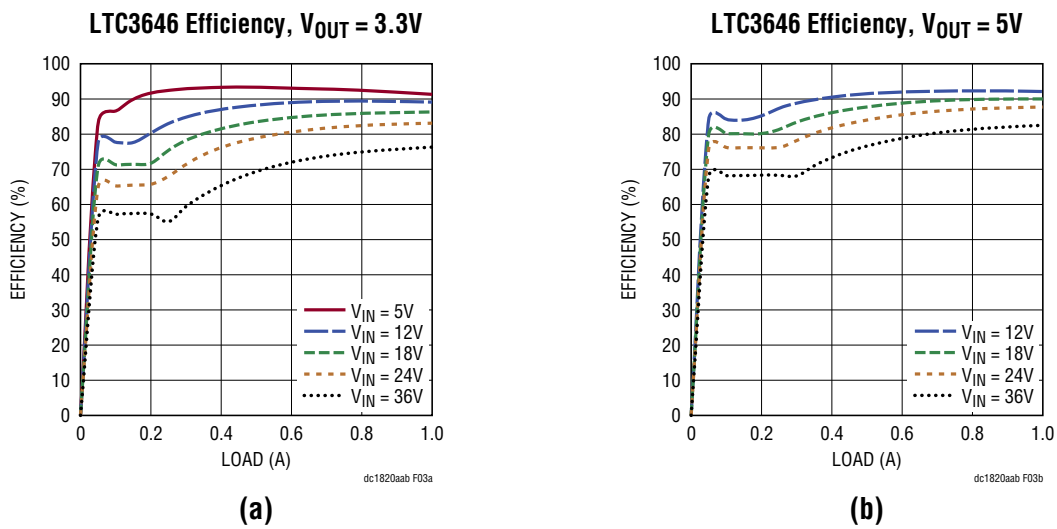


Figure 2. Measuring V_{IN} or V_{OUT} Ripple



Figures 3a and 3b. Measured DC1820A Efficiency at Different V_{IN} and V_{OUT} (Burst Mode Operation Enabled)

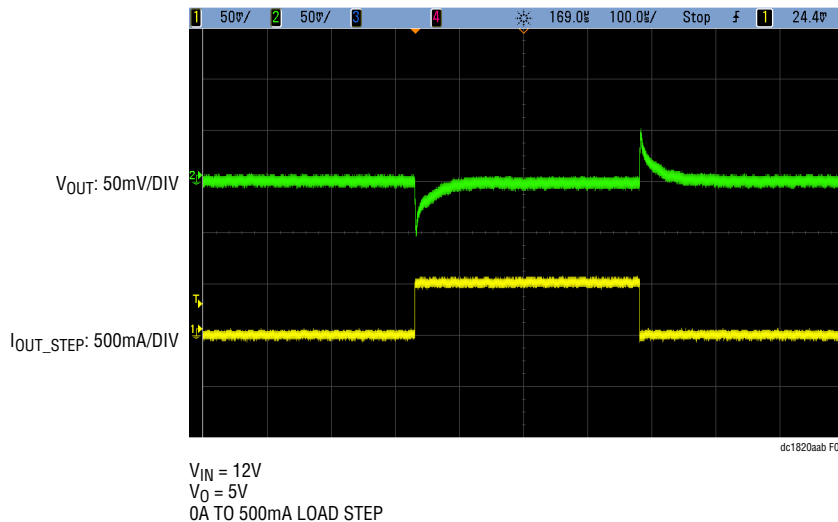


Figure 4. Measured Load Transient Responses

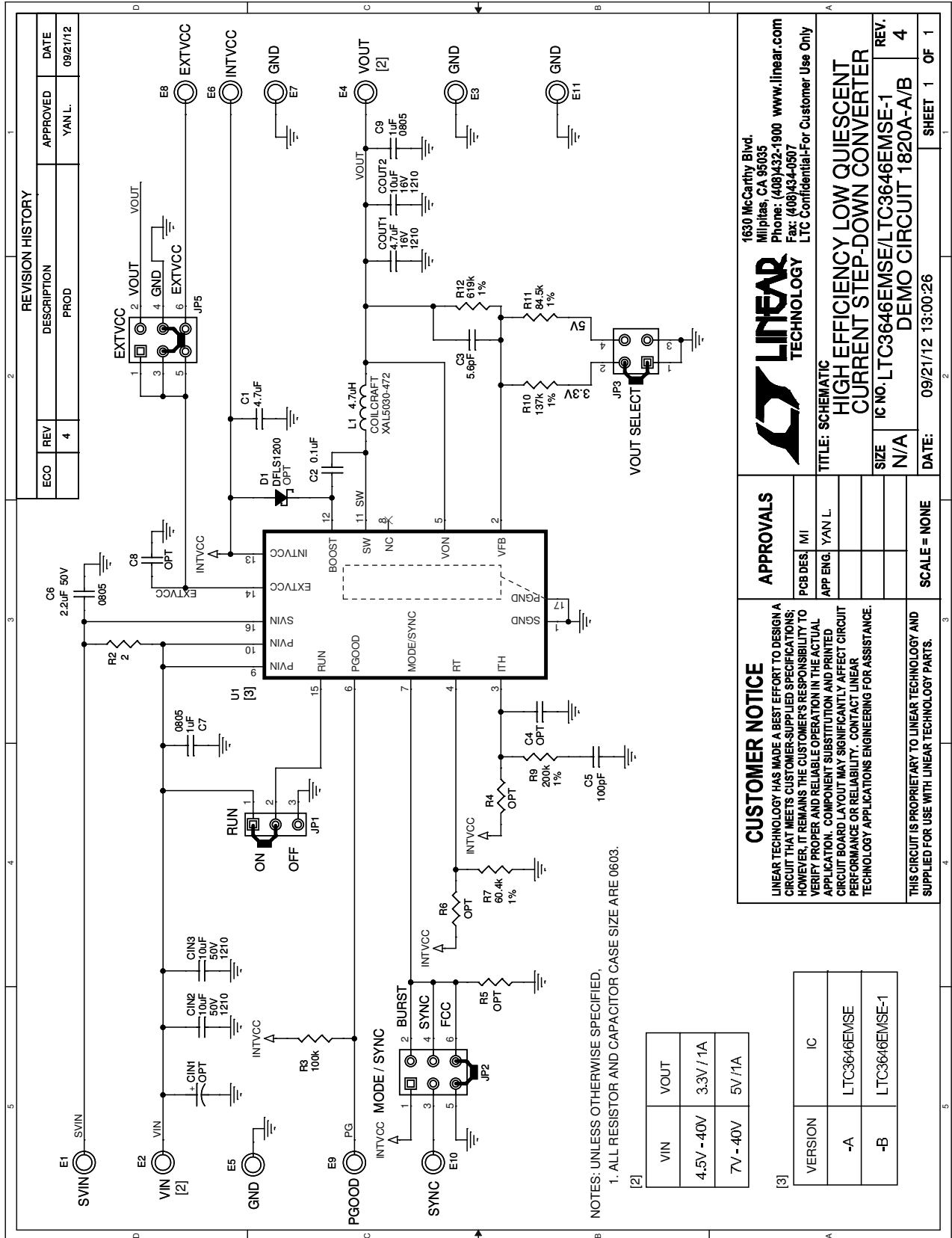
DEMO MANUAL

DC1820A-A/DC1820A-B

PARTS LIST

ITEM	QTY	REFERENCE	PART DESCRIPTION	MANUFACTURER/PART NUMBER
Required Circuit Components				
1	1	U1	IC, HIGH EFFICIENCY LOW QUIESCENT CURRENT STEP-DOWN CONVERTER	LTC3646EMSE FOR DC1820A-A, LTC3646EMSE-1 FOR DC1820A-B
2	2	CIN2, CIN3	CAP, 1210 10 μ F 20% 50V X5R	TAIYO YUDEN UMK325BJ106MM-T
3	1	COUT1	CAP, 1210 4.7 μ F 20% 16V X7R	TAIYO YUDEN EMK325BJ475MN-T
4	1	COUT2	CAP, 1210 10 μ F 20% 16V X5R	TDK C3225X7R1C106M
5	1	C1	CAP, 0603 4.7 μ F 10% 10V X5R	TDK C1608X5R1A475K-T
6	1	C2	CAP, 0603 0.1 μ F 10% 50V X7R	AVX 06035C104KAT2A
7	1	C3	CAP, 0603 5.6pF .25pF 50V NPO	AVX 06035A5R6CAT2A
8	1	C5	CAP, 0603 100pF 10% 50V X7R	AVX 06035C101KAT2A
9	1	C6	CAP, 0805 2.2 μ F 20% 50V Y5V	TDK C2012Y5V1H225Z
10	2	C7, C9	CAP, 0805 1 μ F 10% 50V X7R	MURATA GRM21BR71H105KA12L
11	1	L1	IND, 4.7 μ H	COILCRAFT XAL5030-472MEB
12	1	R2	RES, 0603 2 Ω 5% 1/10W	VISHAY CRCW06032R00FNEA
13	1	R3	RES, 0603 100k Ω 5% 1/10W	VISHAY CRCW0603100KJNEA
14	1	R7	RES, 0603 60.4k Ω 1% 1/10W	VISHAY CRCW060360K4FKED
15	1	R9	RES, 0603 200k Ω 1% 1/10W	VISHAY CRCW0603200KFKEA
16	1	R10	RES, 0603 137k Ω 1% 1/10W	YAGEO RC0603FR-07137KL
17	1	R11	RES, 0603 84.5k Ω 1% 1/10W	VISHAY CRCW060384K5FKEA
18	1	R12	RES, 0603 619k Ω 1% 1/10W	VISHAY CRCW0603619KFKEA
Additional Demo Board Circuit Components				
1	0	CIN1	CAP, 56 μ F 20% 50V ALUM. ELEC. OPTION	SUN ELEC 50HVH56M OPTION
2	0	C4, C8	CAP, 0603 OPTION	OPTION
3	0	D1	DIODE, OPTION	OPTION
4	0	R4, R5, R6	RES, 0603 OPTION	OPTION
Hardware: For Demo Board Only				
1	11	E1-E11	TURRET	MILL-MAX 2501-2-00-80-00-00-07-0
2	1	JP1	HEADER, 2mm, 3PIN	SAMTEC TMM-103-02-L-S
3	2	JP2, JP5	HEADER, 3PIN, DBL ROW 2mm	SAMTEC TMM 103-02-L-D
4	1	JP3	HEADER, 2mm DBL ROW (2X2) 4PIN	SAMTEC TMM-102-02-L-D
5	4	MH1, MH2, MH3, MH4	STANDOFF, SNAP ON	KEYSTONE_8831
6	4	JP1, JP2, JP3, JP5	SHUNT, 2mm	SAMTEC 2SN-BK-G

SCHEMATIC DIAGRAM



DEMO MANUAL

DC1820A-A/DC1820A-B

DEMONSTRATION BOARD IMPORTANT NOTICE

Linear Technology Corporation (LTC) provides the enclosed product(s) under the following **AS IS** conditions:

This demonstration board (DEMO BOARD) kit being sold or provided by Linear Technology is intended for use for **ENGINEERING DEVELOPMENT OR EVALUATION PURPOSES ONLY** and is not provided by LTC for commercial use. As such, the DEMO BOARD herein may not be complete in terms of required design-, marketing-, and/or manufacturing-related protective considerations, including but not limited to product safety measures typically found in finished commercial goods. As a prototype, this product does not fall within the scope of the European Union directive on electromagnetic compatibility and therefore may or may not meet the technical requirements of the directive, or other regulations.

If this evaluation kit does not meet the specifications recited in the DEMO BOARD manual the kit may be returned within 30 days from the date of delivery for a full refund. **THE FOREGOING WARRANTY IS THE EXCLUSIVE WARRANTY MADE BY THE SELLER TO BUYER AND IS IN LIEU OF ALL OTHER WARRANTIES, EXPRESSED, IMPLIED, OR STATUTORY, INCLUDING ANY WARRANTY OF MERCHANTABILITY OR FITNESS FOR ANY PARTICULAR PURPOSE. EXCEPT TO THE EXTENT OF THIS INDEMNITY, NEITHER PARTY SHALL BE LIABLE TO THE OTHER FOR ANY INDIRECT, SPECIAL, INCIDENTAL, OR CONSEQUENTIAL DAMAGES.**

The user assumes all responsibility and liability for proper and safe handling of the goods. Further, the user releases LTC from all claims arising from the handling or use of the goods. Due to the open construction of the product, it is the user's responsibility to take any and all appropriate precautions with regard to electrostatic discharge. Also be aware that the products herein may not be regulatory compliant or agency certified (FCC, UL, CE, etc.).

No License is granted under any patent right or other intellectual property whatsoever. **LTC assumes no liability for applications assistance, customer product design, software performance, or infringement of patents or any other intellectual property rights of any kind.**

LTC currently services a variety of customers for products around the world, and therefore this transaction **is not exclusive**.

Please read the DEMO BOARD manual prior to handling the product. Persons handling this product must have electronics training and observe good laboratory practice standards. **Common sense is encouraged.**

This notice contains important safety information about temperatures and voltages. For further safety concerns, please contact a LTC application engineer.

Mailing Address:

Linear Technology
1630 McCarthy Blvd.
Milpitas, CA 95035

Copyright © 2004, Linear Technology Corporation