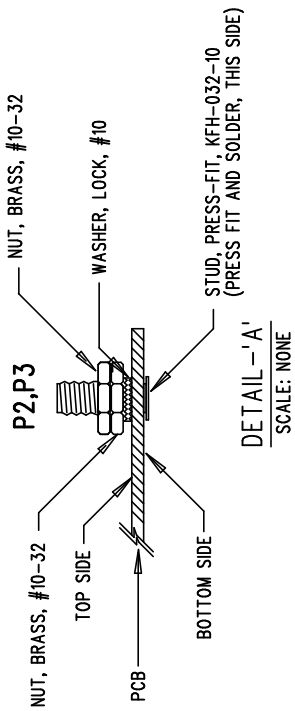


SEE DETAIL A FOR INSTALLING P2,P3

### NOTES : Unless Otherwise Specified

1. BREAK BOARDS FROM THE PANEL WHEN ASSEMBLY IS COMPLETE.
2. OPTIONAL COMPONENTS ARE UNSTUFFED AND SHOULD BE FREE OF SOLDER AFTER ASSEMBLY.



### ASSY DRAWING

APPROVALS		LINEAR TECHNOLOGY		1630 McCarthy Blvd. Milpitas, CA 95035 PH: (408)432-1900	
ENGR	Ryan Huff	DATE	3/12/04		
LAYOUT	J. Wu	DATE	3/12/04		
		TITLE: LTC3705EGN, LTC3706EGN, 36V to 72Vin, Forward Converter			
		SIZE	A	DC776A	REV. A
		SCALE = NONE		DES-230677	
				SHT 1 of 1	