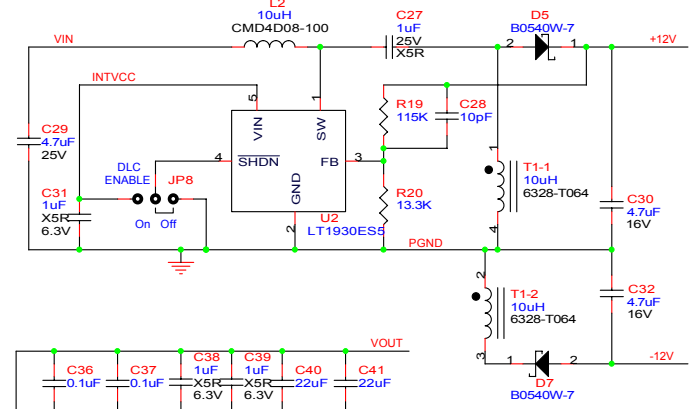
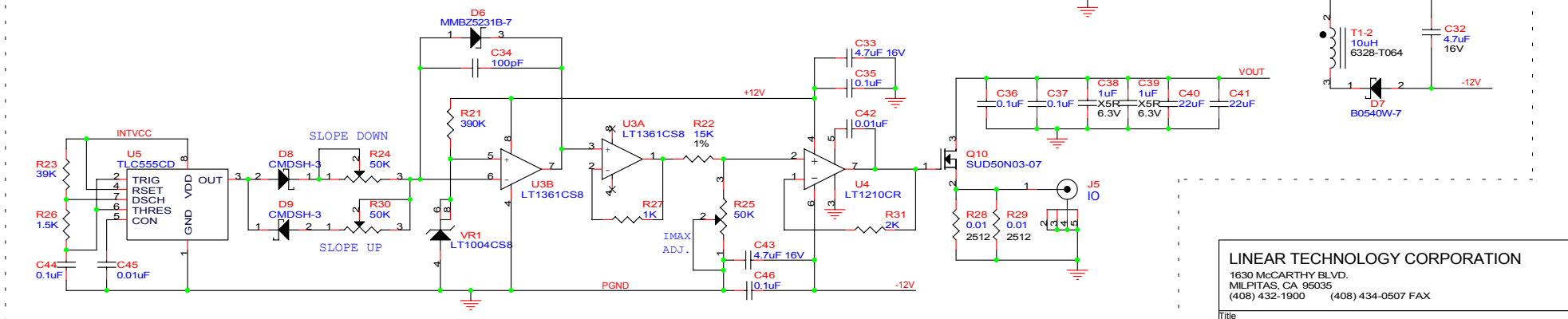


NOTES : unless otherwise specified

7.5V ~ 21V
 1.05V ~ 1.825V @ 20A

DYNAMIC LOAD CIRCUIT



LINEAR TECHNOLOGY CORPORATION
 1630 McCARTHY BLVD.
 MILPITAS, CA 95035
 (408) 432-1900 (408) 434-0507 FAX

Title: **VRM 8.5 Processor Power Supply**
 Size: _____ Document Number: **DEMO 483A** **LTC3720EGN** Rev: _____
 Date: Thursday, December 05, 2002 Sheet 1 of 1