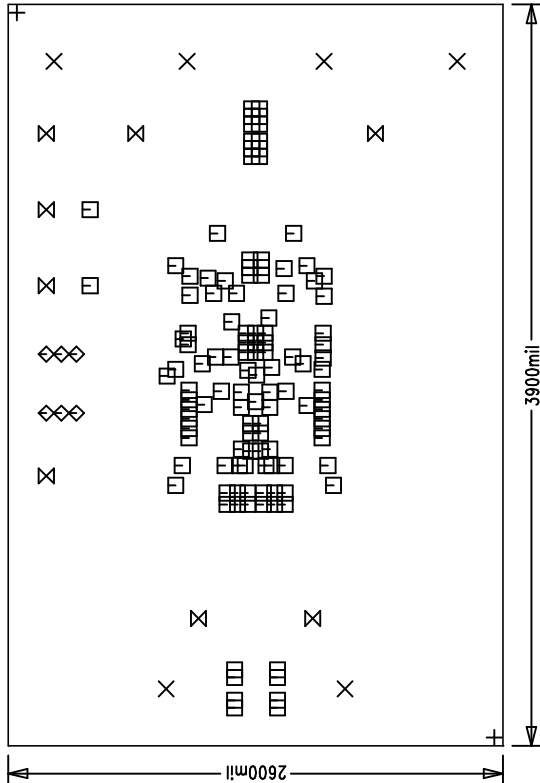


Linear Tech. Corp.  
Demo Circuit 898A

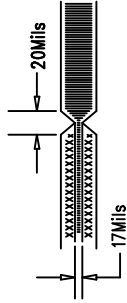


REVISIONS

REV	APPR	DATE
-----	------	------


NOTES: UNLESS OTHERWISE SPECIFIED:

- ARTWORK P/N Demo Circuit 898A Rev1
- FAB PER IPC-A-600. 6-Layers.
- MATERIAL: EPOXY FIBERGLASS, NEMA GRADE FR-4  
.062 +/- .005 INCH THICKNESS WITH 2 OZ.  
COPPER FINISH ON TWO OUTER LAYERS AND  
1 OZ. COPPER ON FOUR INTERNAL LAYERS.  
FLAMABILITY RATING: 94 V-2 MINIMUM .
- SIZE: CUT TO DIMENSIONS AND TOLERANCES SHOWN.  
0.00 ARE PRIMARY DATUMS.
- BOARD: SELECTIVE PLATED BOARD. SOLDER  
MASK OVER BARE COPPER, COLOR, GREEN LPI.  
WHITE TIN IMMERSION (OMIKRON) BOTH SIDES.  
SILKSCREEN COMPONENT SIDE WITH WHITE NON-  
CONDUCTIVE INK.  
PLATE THRU ALL HOLES WITH COPPER  
MIN. PLATING THICKNESS: 1 OZ. EXCEPT  
WHERE PLATING NOT REQUIRED
- DRILL: ALL HOLES SHALL BE DRILLED +/- .003 INCH  
WITH RESPECT TO CTR. OF DRILLED PAD.  
ALL HOLES FINISHED SIZE AFTER PLATING.
- DROP ALL UNUSED PADS ON INNER LAYERS.
- DO NOT ALTER ARTWORK e.g. TO ADD LOGO OR DATE CODE.
- SCORING:



SIZE	QTY	SYM	PLTD	TOL
70	2	+	NO	+/-300Mil
205	6	X	YES	+/-300Mil
10	122	□	YES	+/-300Mil
31	6	◇	YES	+/-300Mil
94	8	⊗	YES	+/-300Mil

Fabrication Drawing

<b>APPROVALS</b>		 <b>LINEAR TECHNOLOGY</b> 1630 McCarthy Blvd. Milpitas, CA 95035 PH: (408)432-1900			
DRAWN	INIT		DATE		
CHECK					
DESIGN	RmB				
ENGR	HenryZ				
TITLE: 2-PHASE DUAL OUTPUT HIGH DENSITY POWER SUPPLY			SIZE	NONE	REV. 1
SCALE = NONE			Demo Circuit 898A		
			DES-23xxxx		SHT 1 of 1