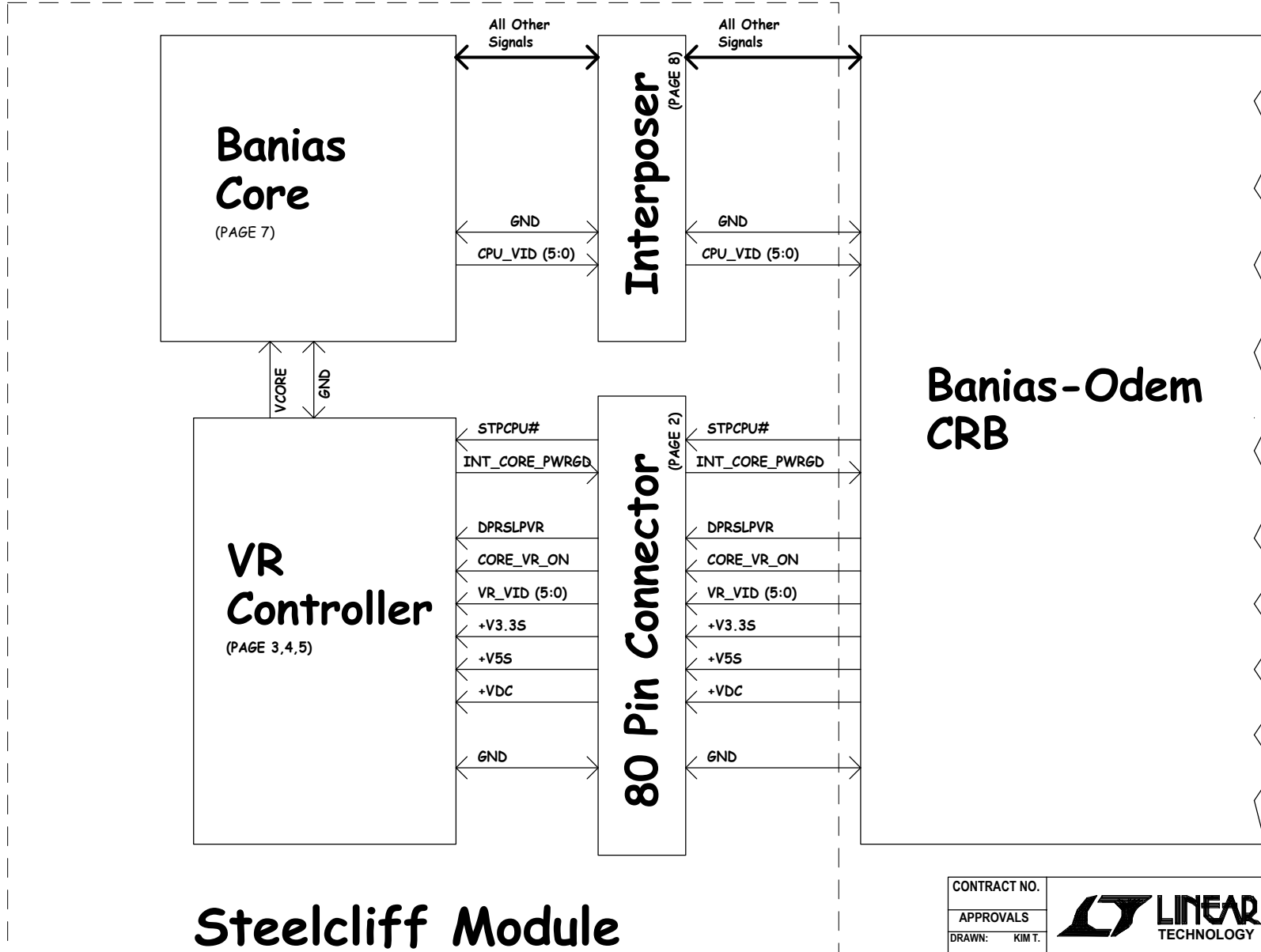


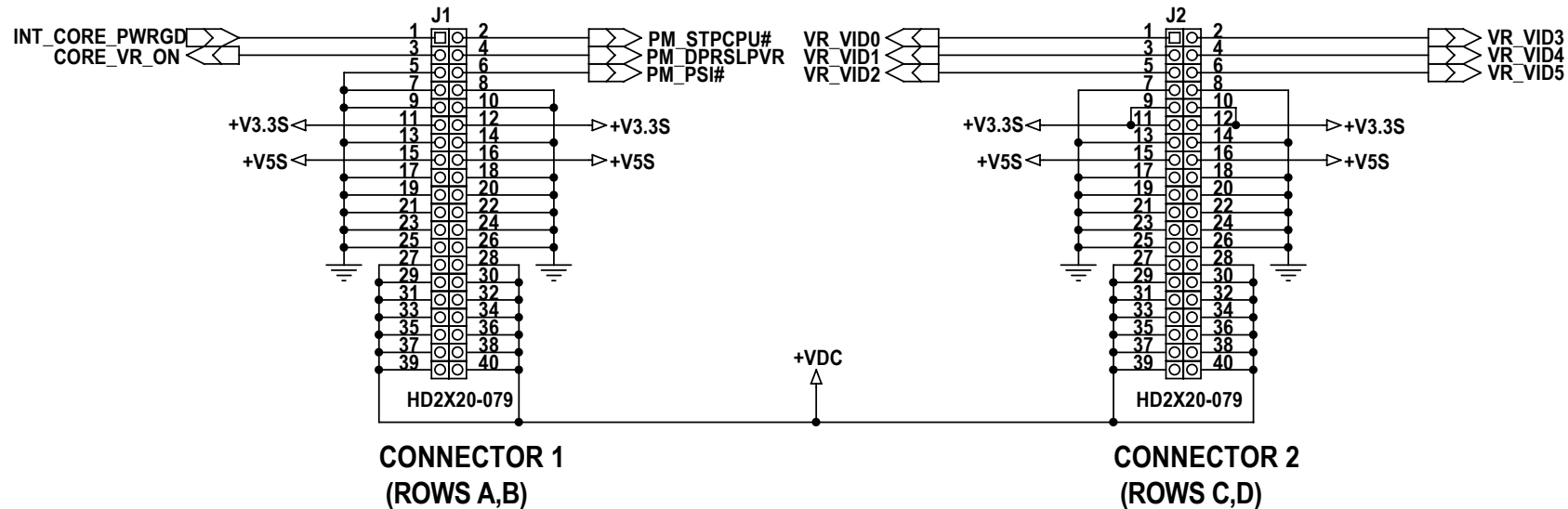
Steelcliff Power Distribution Module



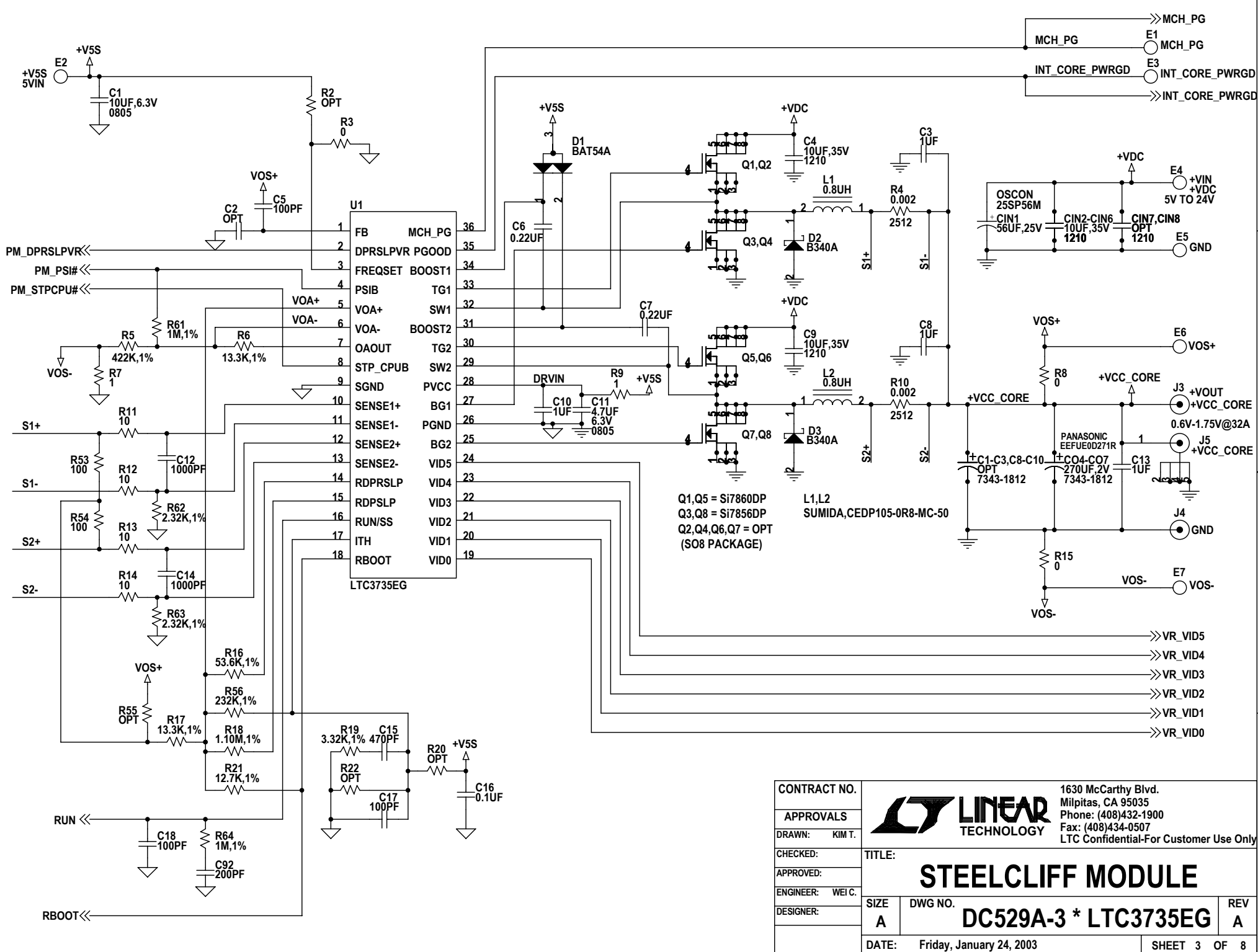
Steelcliff Module

CONTRACT NO.			1630 McCarthy Blvd. Milpitas, CA 95035	
APPROVALS			Phone: (408)432-1900 Fax: (408)434-0507 LTC Confidential-For Customer Use Only	
DRAWN: KIM T.	TITLE: STEELCLIFF MODULE			
CHECKED:	SIZE: A DWG NO. DC529A-3 * LTC3735EG REV A			
APPROVED:	DATE: Friday, January 24, 2003 SHEET 1 OF 8			
ENGINEER: WEI C.				
DESIGNER:				

Steelcliff Power Header




CONTRACT NO.			1630 McCarthy Blvd. Milpitas, CA 95035	
APPROVALS			Phone: (408)432-1900	
DRAWN: KIM T.			Fax: (408)434-0507	
CHECKED:			LTC Confidential-For Customer Use Only	
APPROVED:	TITLE: STEELCLIFF MODULE			
ENGINEER: WEI C.	SIZE	DWG NO.	REV	
DESIGNER:	A	DC529A-3 * LTC3735EG	A	
	DATE: Friday, January 24, 2003		SHEET 2 OF 8	

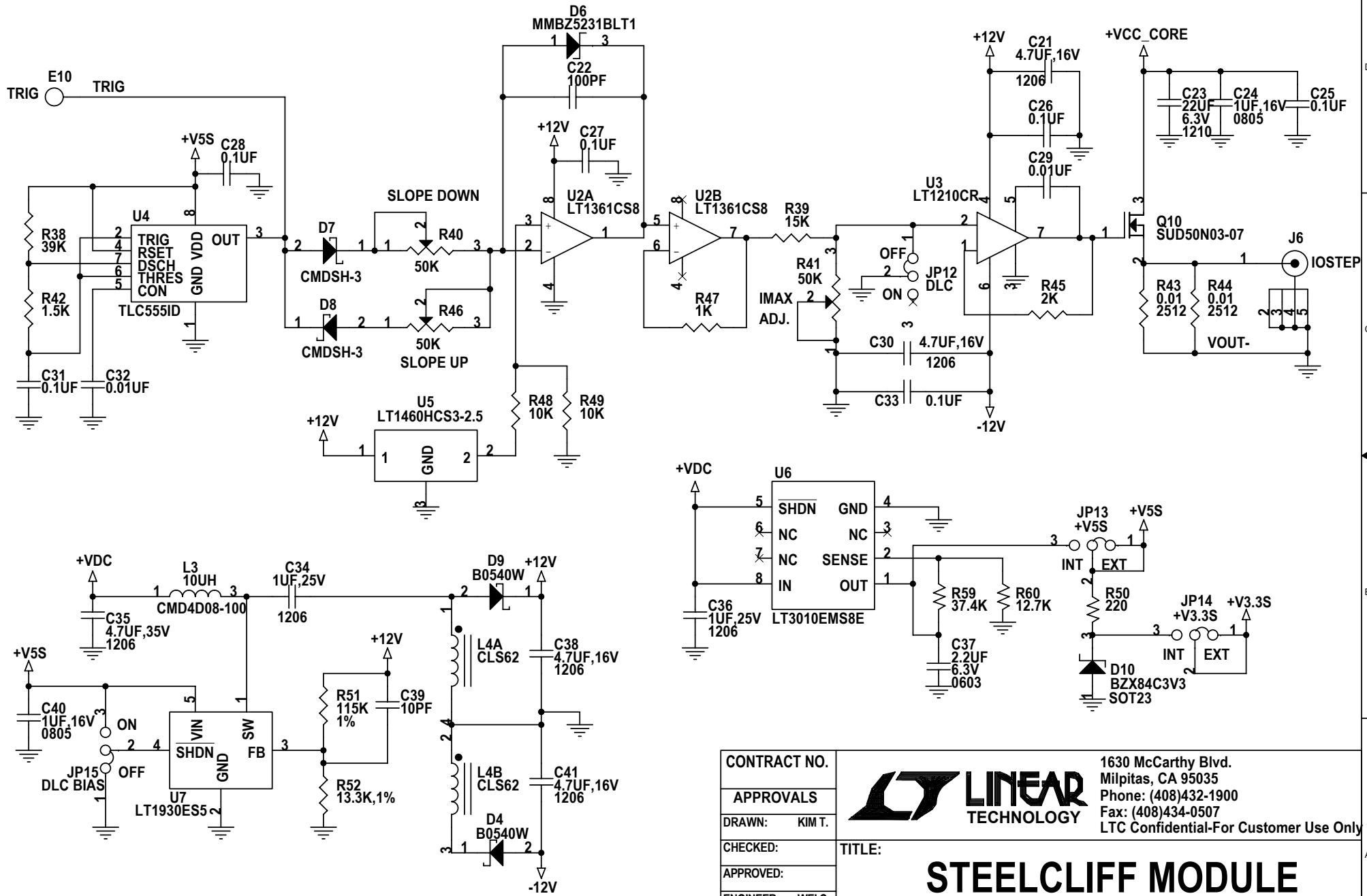



Q1, Q5 = Si7860DP
 Q3, Q8 = Si7856DP
 Q2, Q4, Q6, Q7 = OPT
 (SO8 PACKAGE)

L1, L2
 SUMIDA, CEDP105-0R8-MC-50

CONTRACT NO.			1630 McCarthy Blvd. Milpitas, CA 95035 Phone: (408)432-1900 Fax: (408)434-0507 LTC Confidential-For Customer Use Only	
APPROVALS				
DRAWN: KIM T.	TITLE: STEELCLIFF MODULE			
CHECKED:	SIZE: A		DWG NO. DC529A-3 * LTC3735EG	
APPROVED:	DESIGNER: WEI.C.		REV: A	
DATE: Friday, January 24, 2003	SHEET 3 OF 8			

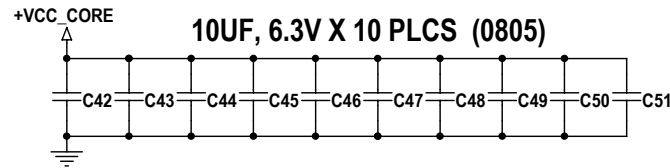
DYNAMIC LOAD CIRCUIT



CONTRACT NO.			1630 McCarthy Blvd. Milpitas, CA 95035 Phone: (408)432-1900 Fax: (408)434-0507 LTC Confidential-For Customer Use Only	
APPROVALS				
DRAWN: KIM T.	TITLE:		STEELCLIFF MODULE	
CHECKED:	SIZE			
APPROVED:	DWG NO.		DC529A-3 * LTC3735EG	
ENGINEER: WEI C.	REV			
DESIGNER:	A		A	
DATE: Friday, January 24, 2003		SHEET 5 OF 8		

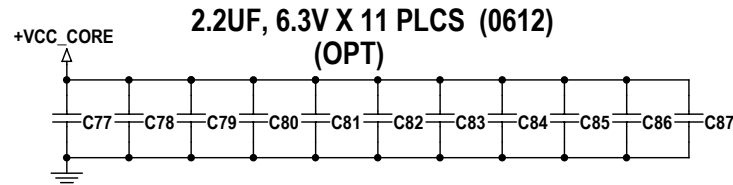
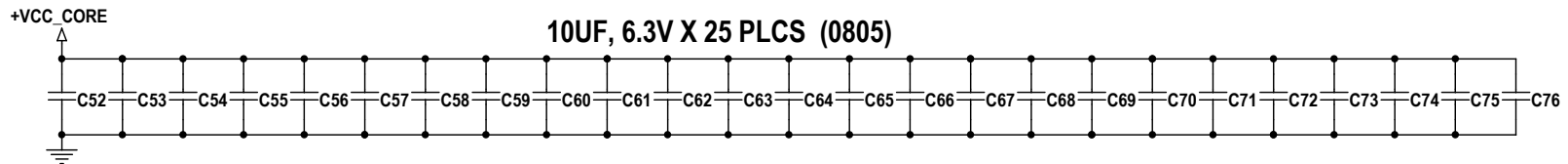
Decoupling For Top Side

HIGH FREQUENCY DECOUPLING (PLACE AROUND PROCESSOR)



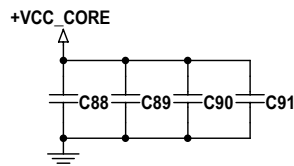
Decoupling For Bottom Side

HIGH FREQUENCY DECOUPLING (PLACE AROUND PROCESSOR)



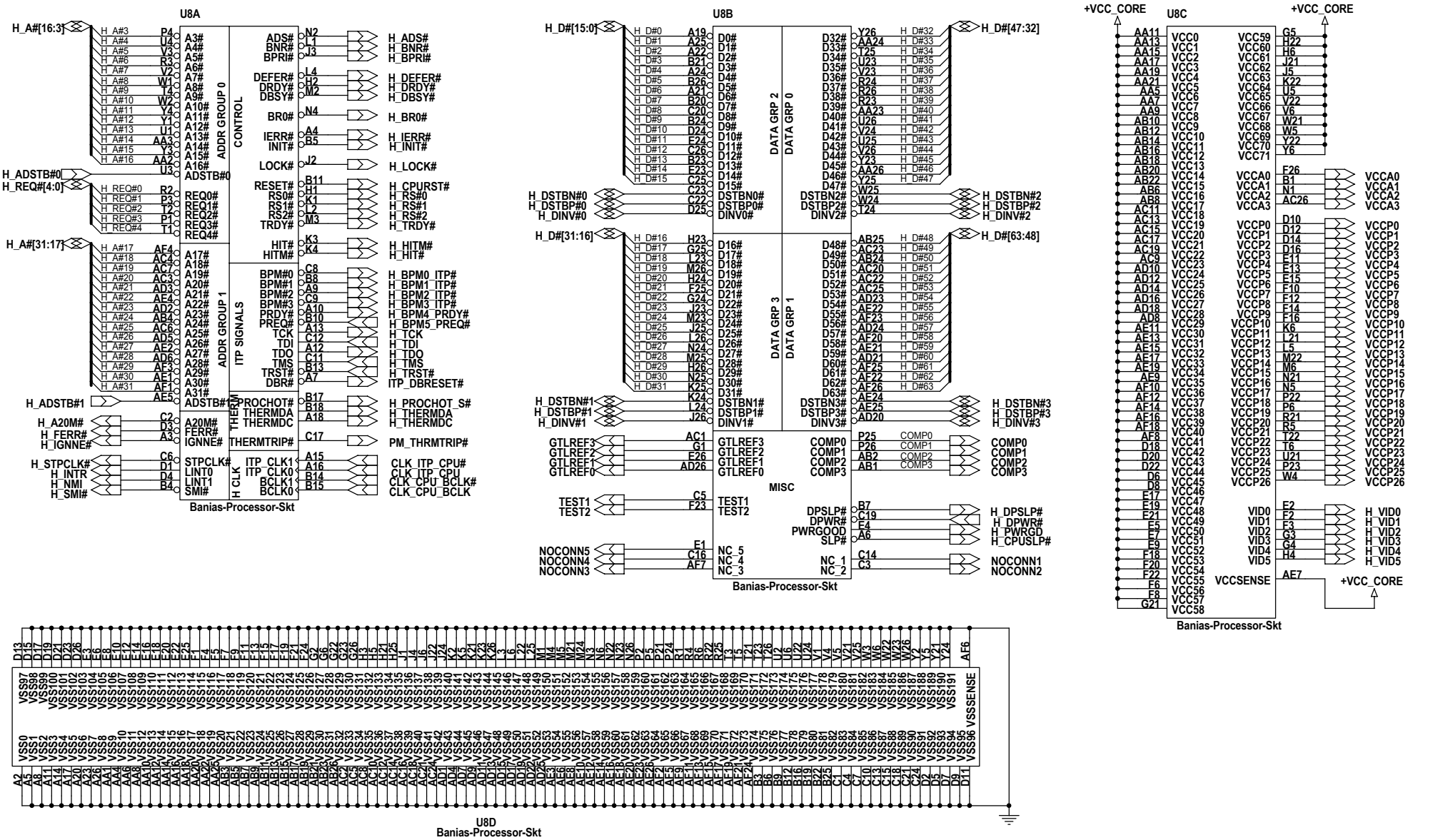
HIGH FREQUENCY DECOUPLING (PLACE UNDERNEATH PROCESSOR)

2.2UF, 6.3V X 4 PLCS (0612)



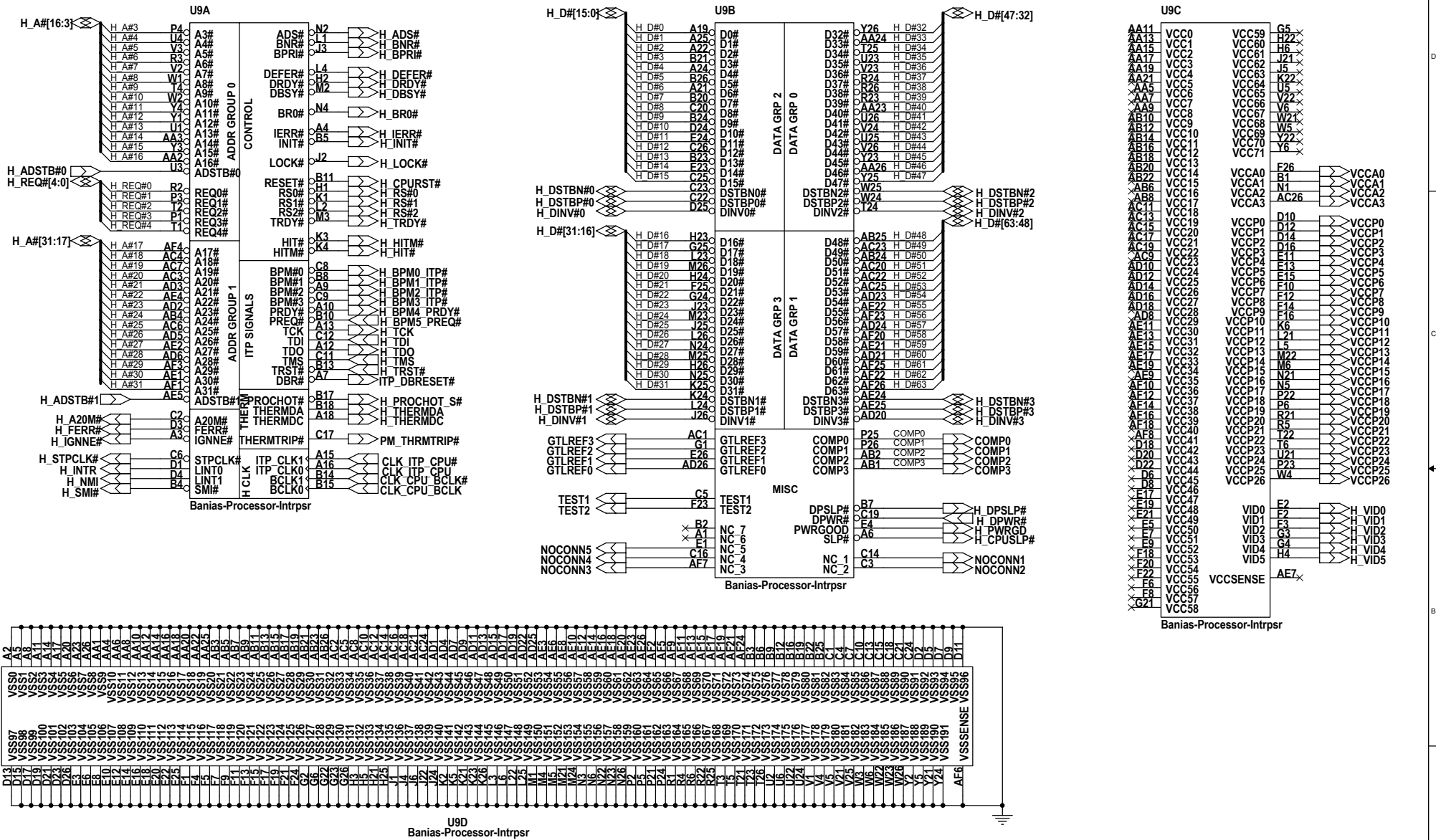
CONTRACT NO.			1630 McCarthy Blvd. Milpitas, CA 95035 Phone: (408)432-1900 Fax: (408)434-0507 LTC Confidential-For Customer Use Only	
APPROVALS				
DRAWN: KIM T.	TITLE: STEELCLIFF MODULE			
CHECKED:	SIZE	DWG NO.	REV	
APPROVED:	A	DC529A-3 * LTC3735EG	A	
ENGINEER: WEI C.	DATE: Friday, January 24, 2003		SHEET 6 OF 8	
DESIGNER:				

Banias Core



CONTRACT NO.			1630 McCarthy Blvd. Milpitas, CA 95035	
APPROVALS			Phone: (408)432-1900 Fax: (408)434-0507 LTC Confidential-For Customer Use Only	
DRAWN: KIM T.	TITLE: STEELCLIFF MODULE			
CHECKED:	SIZE A DWG NO. DC529A-3 * LTC3735EG REV A			
APPROVED:	DATE: Friday, January 24, 2003 SHEET 7 OF 8			
ENGINEER: WEI C.				
DESIGNER:				

Interposer



CONTRACT NO.	1630 McCarthy Blvd. Milpitas, CA 95035	
APPROVALS	Phone: (408)432-1900 Fax: (408)434-0507 LTC Confidential-For Customer Use Only	
DRAWN: KIM T.	TITLE: STEELCLIFF MODULE	
CHECKED:	SIZE A DWG NO. DC529A-3 * LTC3735EG REV A	
APPROVED:	DATE: Friday, January 24, 2003 SHEET 8 OF 8	
ENGINEER: WEI C.		
DESIGNER:		