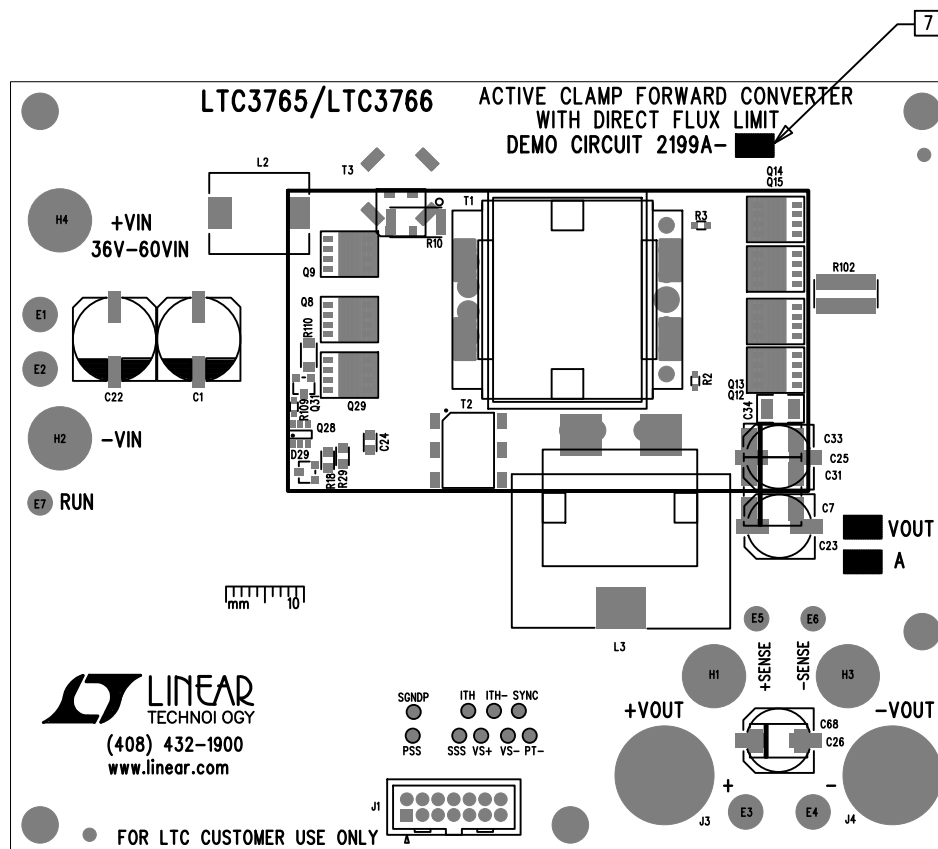
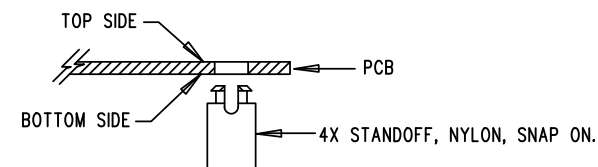


REVISION HISTORY				
ECO	REV	DESCRIPTION	APP. ENG	DATE
-	3	PRODUCTION	DAVE B.	2-26-15

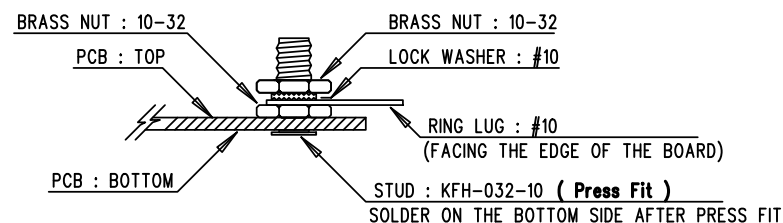



## NOTES: UNLESS OTHERWISE SPECIFIED

- WORKMANSHIP SHALL BE IN ACCORDANCE WITH IPC-A-610.
- ASSEMBLY PROCESS SHALL INCLUDE: REFLOW SOLDER SIDE SMD. MAXIMUM SOLDER TEMPERATURE IS 240 DEGREES CELSIUS.
- PARTS TO OMIT WILL BE SPECIFIED ON THE BILL OF MATERIALS. LOCATIONS OF OMITTED PARTS SHALL BE FREE OF SOLDER. MASK THE SOLDER STENCIL WHERE SMT PARTS ARE OMITTED.
- DEPANELIZE BOARDS AFTER ASSEMBLY AND ROUTE-OUT THE BREAKOUT TABS ON FOUR SIDES OF THE BOARD EDGE.
- DO NOT APPLY ANY KIND OF ASSEMBLY STAMP OR QA STAMP TO ANY BOARD.
- INSTALL 4 STANDOFFS AT LOCATIONS AS SHOWN BELOW:



- 7 SEE THE BILL OF MATERIALS TO MARK THE APPROPRIATE LTC PART NUMBER AND ASSEMBLY TYPE WITH BLACK PERMANENT MARKER.



APPROVALS		 <b>LINEAR TECHNOLOGY</b> 1630 MCCARTHY BLVD MILPITAS, CA 95035 PH: (408)432-1900 www.linear.com LTC CONFIDENTIAL - FOR CUSTOMER USE ONLY		
PCB DES.	LT	TITLE: TOP ASSEMBLY DRAWING ACTIVE CLAMP FORWARD CONVERTER WITH DIRECT FLUX LIMIT		
APP ENG.	DAVE B.			
		SIZE N/A	IC NO. LTC3765EMSE/LTC3766EGN DEMO CIRCUIT 2199A	REV. 3
SCALE = NONE		FILENAME: DC2199A-3.PCB		SHT 1 OF 2