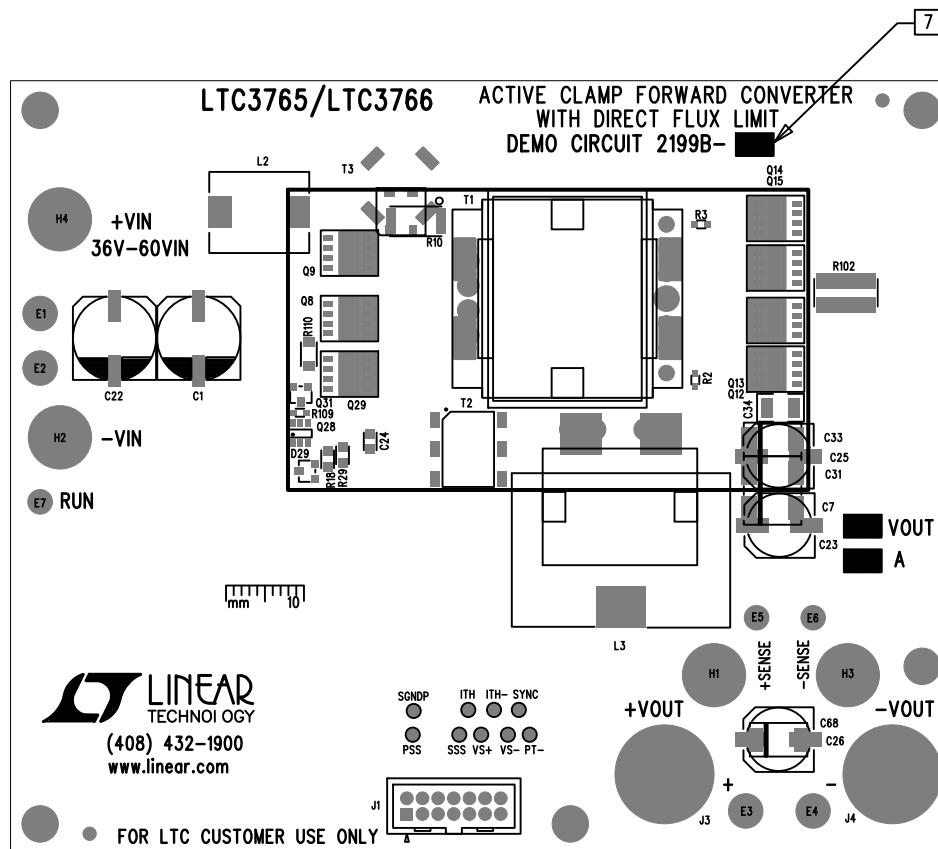
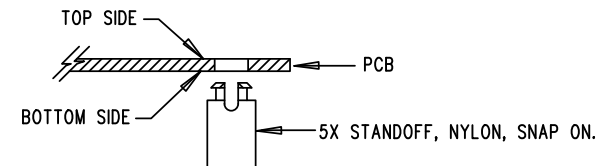


REVISION HISTORY				
ECO	REV	DESCRIPTION	APP. ENG	DATE
-	2	PRODUCTION	DAVE B.	8-29-16



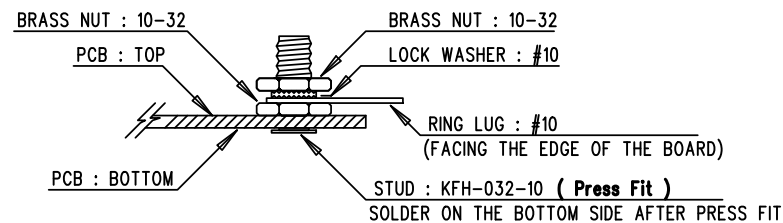
NOTES: UNLESS OTHERWISE SPECIFIED

- WORKMANSHIP SHALL BE IN ACCORDANCE WITH IPC-A-610.
- ASSEMBLY PROCESS SHALL INCLUDE: REFLOW SOLDER SIDE SMD. MAXIMUM SOLDER TEMPERATURE IS 240 DEGREES CELSIUS.
- PARTS TO OMIT WILL BE SPECIFIED ON THE BILL OF MATERIALS. LOCATIONS OF OMITTED PARTS SHALL BE FREE OF SOLDER. MASK THE SOLDER STENCIL WHERE SMT PARTS ARE OMITTED.
- DEPANELIZE BOARDS AFTER ASSEMBLY AND ROUTE-OUT THE BREAKOUT TABS ON FOUR SIDES OF THE BOARD EDGE.
- DO NOT APPLY ANY KIND OF ASSEMBLY STAMP OR QA STAMP TO ANY BOARD.
- INSTALL 4 STANDOFFS AT LOCATIONS AS SHOWN BELOW:



- 7 SEE THE BILL OF MATERIALS TO MARK THE APPROPRIATE LTC PART NUMBER AND ASSEMBLY TYPE WITH BLACK PERMANENT MARKER.

ASSY	VOUT	AMP
-A	12V	30A
-B	24V	15A
-C	56V	5.4A



APPROVALS		 1630 MCCARTHY BLVD MILPITAS, CA 95035 PH: (408)432-1900 www.linear.com LTC CONFIDENTIAL- FOR CUSTOMER USE ONLY	
PCB DES.	LT		
APP ENG.	DAVE B.	TITLE: TOP ASSEMBLY DRAWING ACTIVE CLAMP FORWARD CONVERTER WITH DIRECT FLUX LIMIT	
		SIZE N/A	IC NO. LTC3765EMSE/LTC3766EGN DEMO CIRCUIT 2199B
		SCALE = NONE	REV. 2
		FILENAME: DC2199B-2.PCB	SHT 1 OF 2