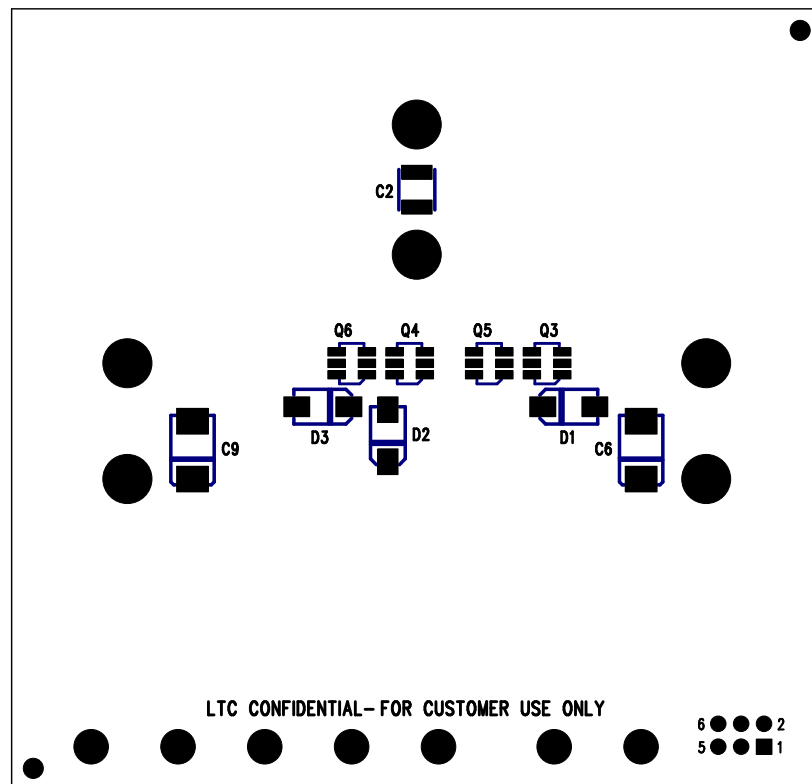
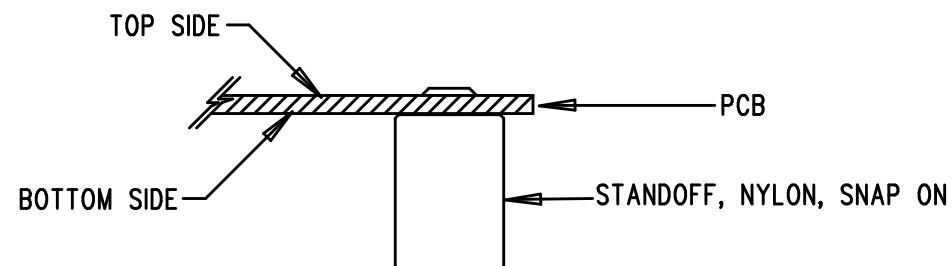


REVISIONS			
REV	DESCRIPTION	APPR	DATE
A	PROTOTYPE RELEASE		



NOTES: UNLESS OTHERWISE SPECIFIED

1. WORKMANSHIP SHALL BE IN ACCORDANCE WITH IPC-A-610.
2. INSTALL SHUNTS ON JP1 PIN1 AND 2.
3. PARTS TO OMIT WILL BE SPECIFIED ON THE BILLS OF MATERIAL. LOCATIONS OF OMITTED PARTS SHALL BE FREE OF SOLDER. MASK THE SOLDER STENCIL WHERE SMT PARTS ARE OMITTED.
4. DEPANELIZE BOARDS AFTER ASSEMBLY AND ROUTE-OUT THE BREAKOUT TABS ON FOUR SIDES OF THE BOARD EDGE.
5. ASSY PROCESSES SHALL INCLUDE: REFLOW SOLDER TOP SIDE SMD.
6. INSTALL 4 STANDOFFS AT 4 CORNERS AS SHOWN BELOW:



APPROVALS

	INIT	DATE
DRAWN		
CHECK		
DESIGN	KIM T.	01-20-05
ENGR	CHARLIE Z.	01-20-05

SCALE = NONE

LINEAR TECHNOLOGY 1630 McCarthy Blvd.
Milpitas, CA 95035
PH: (408)432-1900

TITLE: BOTTOM ASSEMBLY DRAWING
2-PHASE DUAL STEP-DOWN CONVERTER
FOR DDR/QDR MEMORY TERMINATION

SIZE A	DEMO DC829A - LTC3776EUF	REV. A
-----------	-----------------------------	-----------

DES- 0000

SHT 2 of 2