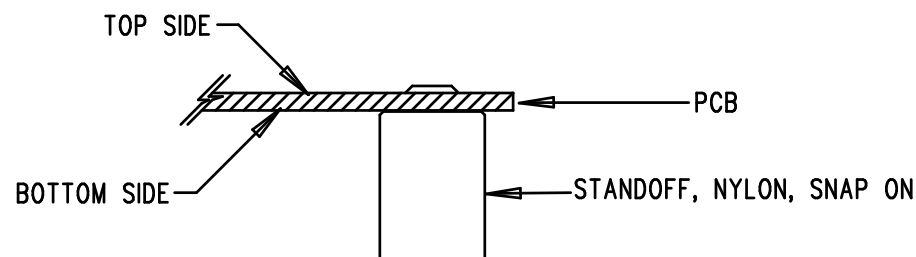


REVISIONS			
REV	DESCRIPTION	APPR	DATE
A-1	FINAL FABRICATION	DB	07-11-07

NOTES: UNLESS OTHERWISE SPECIFIED

1. WORKMANSHIP SHALL BE IN ACCORDANCE WITH IPC-A-610.
2. NO SHUNT.
3. DEPANELIZE BOARDS AFTER ASSEMBLY AND ROUTE-OUT THE BREAKOUT TABS ON FOUR SIDES OF THE BOARD EDGE.
4. ASSY PROCESSES SHALL INCLUDE: REFLOW SOLDER TOP SIDE SMD.
5. INSTALL 4 STANDOFFS AT 4 CORNERS AS SHOWN BELOW:



APPROVALS

	INIT	DATE
DRAWN		
CHECK		
DESIGN	KIM T.	07-11-07
ENGR	DAVID B.	07-11-07

LINEAR TECHNOLOGY 1630 McCarthy Blvd.
Milpitas, CA 95035
PH: (408)432-1900

TITLE: TOP ASSEMBLY DRAWING

10W BUCK-BOOST SYNCHRONOUS CONVERTER

SIZE	DEMO	REV.
A	DC957A-1 * LTC3785EUF	A-1

SCALE = NONE

SHT 1 of 2